

Mars Chocolate Bar 51g



(/Products/Zoom/9018211?shottypid=1&gpeRestricted=False)

Product data

EAN

5000159470476

Target market

GB, IE

Components

Ingredients

Sugar
 Glucose Syrup
 Skimmed Milk Powder
 Cocoa Butter
 Cocoa Mass
 Sunflower Oil
 Milk Fat
 Lactose and Protein from Whey (from Milk)
 Whey Powder (from Milk)
 Palm Fat
 Fat Reduced Cocoa
 Barley Malt Extract
 Emulsifier (Soya Lecithin)
 Salt
 Egg White Powder
 Milk Protein
 Natural Vanilla Extract
 Milk Chocolate contains Milk Solids 14% minimum
 Milk Chocolate contains Vegetable Fats in addition to Cocoa Butter

Allergy Text

May contain: Peanut

Nutrition

	/ 100g	/ 51g (%)
Energy	1883kJ	960kJ (11%)
	448kcal	228kcal (11%)

2



	/ 100g	/51g(%)
Fat	16.7g	8.5g (12%)
of which saturates	8.1g	4.1g (21%)
Carbohydrate	69.3g	35.3g (13%)
of which sugars	59.9g	30.5g (34%)
Protein	4.4g	2.2g (4%)
Salt	0.42g	0.21g (4%)

*Reference intake of an average adult (8 400 kJ/2 000 kcal)

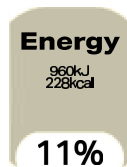
Calculated Nutrition

	per 100g	/51g
Energy (kJ)	1883	960
Energy (kcal)	448	228
Fat (g)	16.7	8.5
of which saturates (g)	8.1	4.1
Carbohydrate (g)	69.3	35.3
of which sugars (g)	59.9	30.5
Protein (g)	4.4	2.2
Salt (g)	0.42	0.21

Front of Pack Nutrition

Per Portion

1 x bar = 51g



100g: 1883 kJ / 448kcal

Reference intake of an average adult (8 400 kJ/2 000 kcal)

Product Description

Brand

Mars

2



Features

Suitable for Vegetarians
Kosher - KLBD-D

Standardised Brand

Brand - Mars

Regulated Product Name

Milk chocolate with soft nougat (32%) and caramel centre (27%).

Marketing

Company Name

Mars / Mars Ireland

Company Address

GB: Freepost Mars.

IRL: Mars Ireland,
Box 3856,
Dublin 4.

Third Party Logos

- Green Dot
- Union Flag

Trademark Information

™/®/designs/© Mars

Health & Lifestyle

Lifestyle

- Kosher
- Suitable for Vegetarians

Allergy Advice

Barley - Contains
Eggs - Contains
Milk - Contains
Peanuts - May Contain
Soya - Contains

Storage & Usage

Storage Type

Type

Ambient



Brandbank Captured Pack Data

Pack Size

51g e

Numeric Size

Numeric Size - 51

Dimension

Shelf Height (mm)	Shelf Width (mm)	Shelf Depth (mm)
29	103	20

(GS1 package measurement rules (http://www.gs1.org/docs/gsm/gdsn/GDSN_Package_Measurement_Rules.pdf))

Unit (specific)

Unit (specific) - Grams

Country

Country of Origin - United Kingdom

Pack Type

Type - Heat Sealed

Weight

Gross Weight - 49

Unit Merchandising

Height - 29

Width - 103

Depth - 20

Origin

Origin Free Text - Made in Slough, UK

Usage Count

Number of uses - Servings

1

Usage Other Text

Portions per pack: 1, Portion size: 51g

Customer Services

Manufacturers Address

GB: Freepost Mars.

IRL: Mars Ireland,
Box 3856,
Dublin 4.

Return To

GB: Freepost Mars Consumer Care.
0800 952 0077
www.mars.co.uk
www.marsnutrition.co.uk

IRL: Mars Ireland,
Box 3856,
Dublin 4.
1890 812 315
www.marsbar.co.uk

Telephone Helpline



GB: 0800 952 0077
IRL: 1890 812 315

Web Address

www.mars.co.uk
www.marsnutrition.co.uk
www.marsbar.co.uk

Extended Data

Languages On Pack

- English

Description Breakdown

Functional Name - Chocolate Bar

