

Maltesers Chocolate Bag 37g



(/Products/Zoom/8230508?shottypid=1&gpeRestricted=False)

Product data

EAN
5000159020312

Target market
GB, IE

Components

Ingredients

Sugar
 Skimmed **Milk** Powder
 Cocoa Butter
 Glucose Syrup
Barley Malt Extract
 Cocoa Mass
 Palm Fat
Lactose and Protein from Whey (from **Milk**)
 Whey Powder (from **Milk**)
Milk Fat
 Emulsifiers (**Soya** Lecithin, E492)
Wheat Flour
 Palm Kernel Fat
 Palm Kernel Oil
 Raising Agents (E341, E500, E501)
Wheat Gluten
 Salt
 Glazing Agent (Pectin)
 Natural Vanilla Extract
 Milk Chocolate contains Milk Solids 14% minimum
 Milk Chocolate contains Vegetable Fats in addition to Cocoa Butter

Nutrition

	/ 100g	/ 37g (%*)
Energy	2108kJ	780kJ (9%)
	503kcal	186kcal (9%)



1

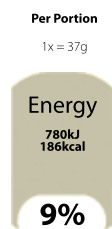
	/ 100g	/ 37g (%*)
Fat	25g	9.1g (13%)
of which saturates	15g	5.6g (28%)
Carbohydrate	62g	23g (9%)
of which sugars	52g	19g (21%)
Protein	8.2g	3.0g (6%)
Salt	0.45g	0.17g (3%)

*Reference intake of an average adult (8 400 kJ/2 000 kcal)

Calculated Nutrition

	per 100g	/ 37g
Energy (kJ)	2108	780
Energy (kcal)	503	186
Fat (g)	25	9.1
of which saturates (g)	15	5.6
Carbohydrate (g)	62	23
of which sugars (g)	52	19
Protein (g)	8.2	3
Salt (g)	0.45	0.17

Front of Pack Nutrition



100g: 2108kJ / 503kcal

Reference intake of an average adult (8 400 kJ/2 000 kcal)



1

Product Description

Brand

Maltesers

Features

Perfect for a treat at work, home or on the go

Fairtrade Chocolate

186 kcal per pack

Suitable for vegetarians

Kosher - KLBD-D

Standardised Brand

Brand - Maltesers

Regulated Product Name

Milk chocolate (73%) with a honeycombed centre (23%).

Marketing

Company Name

Mars / Mars Ireland

Company Address

GB:
Freeport Mars.

IRL:
Mars Ireland,
Box 3856,
Dublin 4.

Third Party Logos

- Fairtrade Foundation
- Green Dot

Product Marketing

Little delicious smooth milk chocolate balls with a crispy malty centre

Brand Marketing

The lighter way to enjoy chocolate...Why not share? Maltesers

Trademark Information

The Fairtrade Mark is a registered trademark of Fairtrade international.

™/®/designs/© Mars

Third Party Logo Other Text

Fairtrade Foundation - Sugar, cocoa, vanilla: traded in compliance with Fairtrade Standards, Visit www.info.fairtrade.net

Health & Lifestyle

Lifestyle

- Kosher
- Suitable for Vegetarians

Allergy Advice

Barley - Contains
 Milk - Contains
 Soya - Contains
 Wheat - Contains

Storage & Usage

Storage Type

Type

Ambient

Brandbank Captured Pack Data

Pack Size

37g e

Numeric Size

Numeric Size - 37

Dimension

Shelf Height (mm)	Shelf Width (mm)	Shelf Depth (mm)
73	112	20

(GS1 package measurement rules (http://www.gs1.org/docs/gsm/gdsn/GDSN_Package_Measurement_Rules.pdf))

Unit (specific)

Unit (specific) - Grams

Pack Type

Type - Heat Sealed

Weight

Gross Weight - 38

Unit Merchandising

Height - 73

Width - 112

Depth - 20

Usage Count

Number of uses - Servings

1

Usage Other Text

Portions per pack: 1, Portion size: 37g



1

Customer Services

Manufacturers Address

GB:
Freepost Mars.

IRL:
Mars Ireland,
Box 3856,
Dublin 4.

Return To

GB:
Freepost Mars Consumer Care,
0800 952 0077
www.mars.co.uk
www.marsnutrition.co.uk

IRL:
Mars Ireland,
Box 3856,
Dublin 4,
1890 812 315

Telephone Helpline

GB: 0800 952 0077
IRL: 1890 812 315

Web Address

www.mars.co.uk
www.marsnutrition.co.uk

Extended Data

Languages On Pack

- English

Description Breakdown

Functional Name - Chocolate Bag



