

Cadbury Snack Shortcake Chocolate Biscuit 40g



(/Products/Zoom/8460750?shottypid=1&gpeRestricted=False)

Product data

EAN
7622210808981

Target market
GB, IE

Components

Ingredients

Wheat Flour

Sugar
Palm Oil
Cocoa Butter
Cocoa Mass
Skimmed **Milk** Powder
Dextrose
Whey Permeate (from **Milk**)
Rapeseed Oil

Milk Fat

Whey Powder (from **Milk**)
Glucose-Fructose Syrup
Molasses
Salt
Emulsifiers (E442, E476)
Raising Agents (Sodium Carbonates, Ammonium Carbonates)
Flavouring

Allergy Text

May contain Nuts.

Nutrition

	Per 100 g:	Per 2 biscuits (20 g):
Energy	2145 kJ (512 kcal)	429 kJ (102 kcal)
Fat	26 g	5.1 g
of which Saturates	13 g	2.5 g
Carbohydrate	63 g	13 g



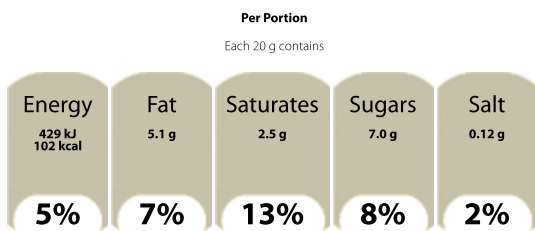
2

	Per 100 g:	Per 2 biscuits (20 g):
of which Sugars	35 g	7.0 g
Fibre	2.1 g	0.4 g
Protein	6.6 g	1.3 g
Salt	0.58 g	0.12 g

Calculated Nutrition

	per 100g	Per 2 biscuits (20 g):
Energy (kJ)	2145	429
Energy (kcal)	512	102
Fat (g)	26	5.1
of which saturates (g)	13	2.5
Carbohydrate (g)	63	13
of which sugars (g)	35	7
Fibre (g)	2.1	0.4
Protein (g)	6.6	1.3
Salt (g)	0.58	0.12

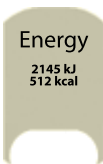
Front of Pack Nutrition



% reference intake of an average adult (8400 kJ / 2000 kcal)

Per 100g/ml

Per 100 g



Product Description

Brand

Cadbury

Features

102 calories
Suitable for vegetarians

Standardised Brand

Brand - Cadbury

Regulated Product Name

Milk Chocolate (43 %) Covered Shortcake Biscuits.

Marketing

Company Name

Mondelez UK / Mondelez Ireland

Company Address

Freeport MDLZ,
Mondelez UK,
Uxbridge,
UB8 1DH.

Mondelez Ireland,
Malahide Road,
Coolock,
Dublin 5.

Third Party Logos

- Green Dot

Further Description

BeTreatwise.net

Health & Lifestyle

Lifestyle

- Suitable for Vegetarians

Allergy Advice

Milk - Contains
Nuts - May Contain
Wheat - Contains

Storage & Usage

Storage Type**Type**

Ambient

Storage

Store in a dry place. Protect from heat.



Brandbank Captured Pack Data

Pack Size

40g e

Numeric Size

Numeric Size - 40

Dimension

Shelf Height (mm)	Shelf Width (mm)	Shelf Depth (mm)
48	134	17

(GS1 package measurement rules (http://www.gs1.org/docs/gsm/gdsn/GDSN_Package_Measurement_Rules.pdf))

Unit (specific)

Unit (specific) - Grams

Pack Type

Type - Wrap

Weight

Gross Weight - 41

New Product Development

Final Product - Not NPDP

Unit Merchandising

Height - 17
 Width - 134
 Depth - 48
 Unit Stackable - No
 Unit Stable - Yes
 Merchandise Multiple Ways - Yes

Shelf Ready Pack

GTIN - 07622210808974
 Height - 113
 Width - 135
 Depth - 248
 Weight - 1526
 Unit Count - 36
 Unit Height - 6
 Unit Width - 1
 Unit Depth - 6
 Merchandise Multiple Ways - No
 Prototype - No
 Is Case - No

Case

GTIN - 07622210808974
 Height - 115
 Width - 135
 Depth - 248
 Weight - 1547
 Unit Count - 36
 Prototype - No

Usage Count

Number of uses - Servings

2

Usage Other Text

2x Biscuits = 1 Portion. 2 portions per pack. 4 biscuits per pack.

Customer Services

Manufacturers Address

2



Freepost MDLZ,
Mondelez UK,
Uxbridge,
UB8 1DH.

Mondelez Ireland,
Malahide Road,
Coolock,
Dublin 5.

Return To

Freepost MDLZ,
Mondelez UK,
Consumer Response,
Uxbridge,
UB8 1DH.
Careline: Tel: 0800 783 7106
www.cadbury.co.uk

Mondelez Ireland,
Malahide Road,
Coolock,
Dublin 5.
Freephone 1800 600 858

Telephone Helpline

0800 783 7106 (UK)
1800 600 858

Web Address

www.cadbury.co.uk







Each 20 g contains

Per 100 g	Energy	Fat	Saturates	Sugars	Salt
2145 kJ 512 kcal	429 kJ 102 kcal	5.1 g	2.5 g	7.0 g	0.12 g
	5%*	7%	13%	8%	2%

*% reference intake of an average adult (8400 kJ / 2000 kcal)

