

Cadbury Creme Egg Single 40g



EAN
50201600

Target market(s)
GB, IE

Components

Ingredients

Sugar

Milk

Glucose Syrup

Cocoa Butter

Invert Sugar Syrup

Dried Whey (from **Milk**)

Cocoa Mass

Vegetable Fats (Palm, Shea)

Emulsifier (E442)

Dried **Egg** White

Flavourings

Colour (Paprika Extract)

Milk Chocolate: Milk Solids 14% minimum

Contains Vegetable Fats in addition to Cocoa Butter

Nutrition

	Per 100g	Per egg (40g)	*Reference Intakes
Energy	1860 kJ	744 kJ	8400 kJ
	440 kcal	177 kcal	2000 kcal
Fat	15g	6.1g	70g
of which Saturates	9.3g	3.7g	20g
Carbohydrate	73g	29g	260g
of which Sugars	66.5g	26.5g	90g
Fibre	0.4g	0.1g	-
Protein	3.2g	1.3g	50g
Salt	0.15g	0.06g	6g

*% reference intake of an average adult (8400 kJ/2000 kcal)

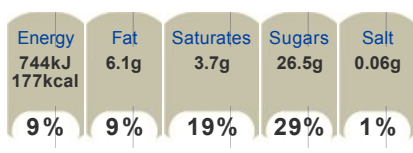
Calculated Nutrition

	per 100g	Per egg (40g)
Energy (kJ)	1860	744
Energy (kcal)	440	177
Fat (g)	15	6.1
of which saturates (g)	9.3	3.7
Carbohydrate (g)	73	29
of which sugars (g)	66.5	26.5
Fibre (g)	0.4	0.1
Protein (g)	3.2	1.3
Salt (g)	0.15	0.06

Front of Pack Nutrition

Per Portion

Each 40g serving contains



Per 100g/ml

Per 100g



% reference intake of an average adult (8400 kJ/2000 kcal)

Product Description

Brand

Cadbury

Features

Delicious Cadbury milk chocolate egg with a gooey fondant centre
A perfect Easter treat!
Suitable for vegetarians

Standardised Brand

Brand - Cadbury

Regulated Product Name

Milk chocolate egg with a soft fondant centre (47%)

Marketing

Company Name

Mondelez UK / Mondelez Ireland

Company Address

Mondelez UK,
PO Box 7008,
Birmingham,
B30 2PT.

Mondelez Ireland,
Malahide Road,
Coolock,
Dublin 5.

Health & Lifestyle

Lifestyle

- Suitable for Vegetarians

Allergy Advice

Eggs - Contains
Milk - Contains

Storage & Usage

Storage Type

Type

Ambient

Storage

Store in a cool, dry place

Brandbank Captured Pack Data

Pack Size

40g e

Numeric Size

Numeric Size - 40

Dimension

Shelf Height (mm)	Shelf Width (mm)	Shelf Depth (mm)
50	35	35

(GS1 package measurement rules)

Pack Type

Type - Foil Wrap

Weight

Gross Weight - 41

New Product Development

Final Product - Not NPDP

Unit Merchandising

Height - 50

Width - 35

Depth - 35

Unit Stackable - No

Unit Stable - No

Merchandise Multiple Ways - No

Shelf Ready Pack

Height - 79

Width - 247

Depth - 189

Weight - 2023

Unit Count - 48

Unit Height - 1

Unit Width - 1

Unit Depth - 48

Merchandise Multiple Ways - No

Prototype - No

Is Case - No

Case

GTIN - 05000201010247

Height - 79

Width - 190

Depth - 252

Weight - 2043

Unit Count - 48

Prototype - No

Customer Services

Manufacturers Address

Mondelez UK,
PO Box 7008,
Birmingham,
B30 2PT.

Mondelez Ireland,
Malahide Road,
Coolock,
Dublin 5.

Return To

Mondelez UK,
PO Box 7008,
Birmingham,
B30 2PT.

Mondelez Ireland,
Malahide Road,
Coolock,
Dublin 5.
Freephone 0800 818181 during office hours (UK only).

Telephone Helpline

0800 818181

Extended Data

Languages On Pack

- English



