

## Cadbury Dairy Milk Buttons Chocolate Bag 30g



**EAN**

96098936

**Target market(s)**

GB, IE

## Components

### Ingredients

#### Milk\*\*

Sugar

Cocoa Butter

Cocoa Mass

Vegetable Fats (Palm, Shea)

Emulsifier (E442)

Flavourings

Milk Solids 20 % minimum, actual 23 %

Cocoa Solids 20 % minimum

Contains Vegetable Fats in addition to Cocoa Butter

\*\*The equivalent of 426 ml of Fresh Liquid Milk in every 227 g of Milk Chocolate

### Nutrition

	Per 100 g:	Per Bag (30 g):
Energy	2234 kJ (535 kcal)	670 kJ (160 kcal)
Fat	30 g	9.1 g
of which Saturates	18 g	5.5 g
Carbohydrate	57 g	17 g
of which Sugars	56 g	17 g
Fibre	2.1 g	0.6 g
Protein	7.3 g	2.2 g
Salt	0.24 g	0.07 g

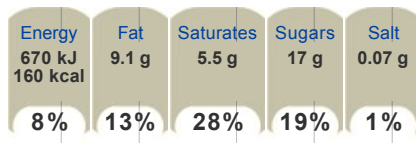
### Calculated Nutrition

	per 100g	Per Bag (30 g):
Energy (kJ)	2234	670
Energy (kcal)	535	160
Fat (g)	30	9.1
of which saturates (g)	18	5.5
Carbohydrate (g)	57	17
of which sugars (g)	56	17
Fibre (g)	2.1	0.6
Protein (g)	7.3	2.2
Salt (g)	0.24	0.07

### Front of Pack Nutrition

#### Per Portion

Be Treatwise. Each 30 g contains



#### Per 100g/ml

Per 100 g



% reference intake of an average adult (8400 kJ / 2000 kcal)

## Product Description

### Brand

Cadbury

### Features

Deliciously creamy milk chocolate in little fun shaped pieces  
Made with Fairtrade cocoa and sugar  
Suitable for vegetarians

### Standardised Brand

Brand - Cadbury

### Regulated Product Name

Milk chocolates.

## Marketing

### Company Name

Mondelez UK / Mondelez Ireland

### Company Address

Mondelez UK,  
PO Box 7008,  
Birmingham,  
B30 2PT.

Mondelez Ireland,  
Malahide Road,  
Coolock,  
Dublin 5.

### Manufacturer Marketing

By Appointment to H.M. The Queen Cocoa and Chocolate Manufacturers Cadbury UK Ltd., Bournville.

### Further Description

Cocoa Life  
Partnering with Fairtrade Foundation  
[www.cocoalife.org](http://www.cocoalife.org)

### Trademark Information

Made under licence from Cadbury UK Ltd.

## Health & Lifestyle

### Lifestyle

- Suitable for Vegetarians

### Allergy Advice

Milk - Contains

## Storage & Usage

### Storage Type

#### Type

Ambient

### Storage

Store in a dry place. Protect from heat.

## Brandbank Captured Pack Data

### Pack Size

30g e

### Numeric Size

Numeric Size - 30

### Dimension

Shelf Height (mm)	Shelf Width (mm)	Shelf Depth (mm)
118	83	16

### (GS1 package measurement rules)

### Pack Type

Type - Heat Sealed

### Weight

Gross Weight - 32

### New Product Development

Final Product - Not NPD

### Unit Merchandising

Height - 118

Width - 83

Depth - 16

Unit Stackable - No

Unit Stable - Yes

Merchandise Multiple Ways - No

Max. Squashed Height - 54

Max. Squashed Width - 49

Max. Squashed Depth - 14

Squashed Volume Type - Fixed

### Shelf Ready Pack

GTIN - 07622210296474

Height - 118

Width - 159

Depth - 271

Weight - 925

Unit Count - 28

Unit Height - 1

Unit Width - 1

Unit Depth - 28

Merchandise Multiple Ways - No

Prototype - No

Is Case - No

### Case

GTIN - 07622210296474

Height - 118

Width - 159

Depth - 271

Weight - 954

Unit Count - 28

Prototype - No

## Customer Services

### Manufacturers Address

Mondelez UK,  
PO Box 7008,  
Birmingham,  
B30 2PT.

Mondelez Ireland,  
Malahide Road,  
Coolock,  
Dublin 5.

### Return To

We are passionate about our great quality Cadbury products. Not completely satisfied? Please contact us:  
Freephone 0800 818181 (UK only)  
Mondelez UK,  
PO Box 7008,  
Birmingham,  
B30 2PT.

Mondelez Ireland,  
Freephone 1-800 678708,  
Malahide Road,  
Coolock,  
Dublin 5.  
[www.cadbury.co.uk](http://www.cadbury.co.uk)

### Telephone Helpline

0800 818181 (UK)  
1-800 678708

### Web Address

[www.cadbury.co.uk](http://www.cadbury.co.uk)

## Extended Data

### Languages On Pack

- English



