

Changed Feb 26, 2024 11:54

Reviewed Feb 26, 2024 11:54

Erudus ID d9b3299301e245a59458eb78f01df841

Version 3.0



This specification is published by [Erudus](#) for Caterforce

Eden Grove 10840 Pure Orange Juice From Concentrate 27x200ml

Eden Grove 10840 Pure Orange Juice From Concentrate 27x200ml

PRODUCT DESCRIPTION

Orange Juice from Concentrate

Brand	Caterforce
Label Own Label Code	10840
Product Type	Drink
Product Category	Juices and Cordials
Storage Type	Ambient
Erudus ID	d9b3299301e245a59458eb78f01df841
Specification Type	Drinks
Inner Component GTIN	5060480566712
Outer Case GTIN	5060480566729



INGREDIENTS

Ingredient Declaration

Orange Juice from Concentrate (100%)

ALLERGENS

Product Contains:

Celery/Celeriac	No	Mustard	No
Cereals Containing Gluten	No	Nuts (Tree)	No
Barley	No	Almond nuts	No
Oats	No	Brazil nuts	No
Rye	No	Cashew nuts	No
Wheat (including Spelt and Khorasan)	No	Hazelnuts	No
Crustacea	No	Macadamia (Queensland) nuts	No
Eggs	No	Pecan nuts	No
Fish	No	Pistachio nuts	No
Lupin	No	Walnuts	No
Milk	No	Peanuts	No
Molluscs	No	Sesame Seeds	No
		Soybeans	No
		Sulphur Dioxide and Sulphites	No

Additional Allergen Information

No allergens on site.

SUPPLEMENTARY INGREDIENT INFORMATION

Palm Oil	No
Hydrogenated Vegetable Oil/Fat	No
GM Protein/DNA	No

ADDITIVES

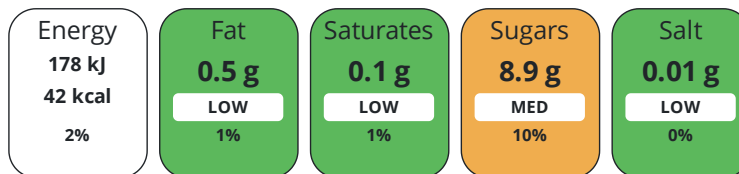
Product Contains:

Artificial Antioxidants	No	Artificial Flavourings	No
Artificial Colours	No	Artificial Preservatives	No
Artificial Flavour Enhancers	No	Artificial Sweeteners	No
Vegan Diet	Suitable for	Vegetarian Diet	Suitable for
Halal Diet	No	Kosher Diet	No

DIET
SUITABILITY

NUTRITIONAL
INFORMATION

Each 100g/ml portion contains:



of your reference intake.

Typical values per 100g/ml : Energy 42kcal / 178kJ

Nutrient	per 100ml	RI per 100ml	per 200ml serving	RI per 200ml serving
Energy (kJ)	178 kJ	2%	356 kJ	4%
Energy (kcal)	42 kcal	2%	84 kcal	4%
Fat	< 0.5 g	1%	1 g	1%
of which Saturates	< 0.1 g	1%	0.2 g	1%
Carbohydrate	8.9 g	3%	17.8 g	7%
of which Sugars	8.9 g	10%	17.8 g	20%
of which Polyols	0 g	-	-	-
of which Starch	0 g	-	-	-
Fibre	< 0.5 g	-	1 g	-
Protein	0.5 g	1%	1 g	2%
Salt	< 0.01 g	0%	-	-

Serving Size 200 ml

VITAMINS AND
MINERALS

Nutrient	per 100ml	RI per 100ml	per 200ml serving	RI per 200ml serving
Vitamin A	0 µg	0%	-	-
Vitamin C	0 mg	0%	-	-
Folate/Folic Acid	0 µg	0%	-	-
Calcium	0 mg	0%	-	-
Iron	0 mg	0%	-	-
Zinc	0 mg	0%	-	-

SUPPLEMENTARY
NUTRITIONAL
INFORMATION

Cholesterol per 100 g/ml (UK/FR)	0 g
Trans Fats per 100 g/ml	0 g
Fat Percentage in Dry Matter per 100 g/ml	0 %
Non Milk Extrinsic Sugars per 100 g/ml	0 g

HFSS (HIGH IN
FAT, SALT AND
SUGAR)

HFSS Status	Yes
--------------------	-----

HANDLING &
STORAGE
INFORMATION

Directions For Use

Best served chilled. Shake well before use.

Storage Instructions

Store in a cool dry place. Once opened, keep refrigerated and consume within 3 days and by Best Before End date.

Shelf Life from Time of Production 270 Days **Exempt From Shelf Life Labelling** No

ACCREDITATIONS/
CERTIFICATIONS/
ASSURANCE
SCHEMES
ORIGIN

BRCGS Certified

Product Country of Origin/Place of Ireland

Provenance

Additional Origin Details

Packed for Caterforce Ltd, Cheshire, SK10 1LT and Caterforce Ltd, Suite 105, 3 Lombard Street East, Dublin 2, Ireland.

PRODUCT
CHARACTERISTICS

Standards Testing

Do you undertake trend analysis of microbiological results? Yes **Is shelf life testing undertaken?** Yes

Microbiological Standards

Organism	Description	Frequency	Target	Maximum	Sample (g or ml)
Coliforms (cfu/g or ml)		Every Batch	<1	0	1000
Total Viable Count (TVC) (cfu/g or ml)		Every Batch	<1	1	1000
Yeast (cfu/g or ml)		Every Batch	<1	1	1000
Moulds (cfu/g or ml)		Every Batch	<1	1	1000

Analytical Standards

Test	Description	Frequency	Target	Range	Sample (g or ml)
Brix (°Bx)		Every Batch	=11.3	11.2 to 11.4	1000

CONFIGURATION

Case Configuration

Inner Pack Configuration

Total Quantity of Inner Components in 27 Units

Outer Case

Is the Outer Case Splittable? No

PRODUCT
WEIGHTS

Inner Component

Inner Component Volume 200 ml

Net Drained Weight 0 g

Outer Case

Outer Case Gross Weight 5.7 kg

Outer Case Net Weight 5.4 kg

PRODUCT
DIMENSIONS

Inner Component

Inner Component Depth 173 mm

Inner Component Width 26 mm

Inner Component Height 174 mm

Outer Case

Outer Case Depth 369 mm

Outer Case Width 122 mm

Outer Case Height 153 mm

PALLET INFORMATION

Quantity of Cases Per Pallet Layer	17 Cases	Pallet Height	1.18 MTR
Quantity of Layers Per Pallet	9 Layers	Pallet Gross Weight	901.13 kg
Quantity of Cases Per Pallet	153 Cases		

PACKAGING

Inner Component Packaging

Type	Materials	Weight	Recycled Plastic %	Recyclable	Returnable	Composite
Carton	Paper/Cardboard	8.7 g	- %			

Outer Case Packaging

Type	Materials	Weight	Recycled Plastic %	Recyclable	Returnable	Composite
Case	Plastic	15 g	100.00 %			
Case	Paper/Cardboard	58.9 g	- %			

Transport Packaging

Type	Materials	Weight	Recycled Plastic %	Recyclable	Returnable	Composite
Other	Plastic	30 g	0.00 %		Yes	
Other	Paper/Cardboard	8 g	- %		Yes	
Other	Wood	28000 g	- %		Yes	

OTHER INFORMATION

Intrastat/Taric Code 20091200

CONTACT INFORMATION

ADDRESS

Caterforce
United Kingdom

P: (Phone) 01625 440188

The information on the [Erudus System](#) has been supplied by the manufacturers of the products and, whilst the owners of the Erudus System take steps to ensure the information is regularly updated, they give no warranty and no guarantee that the information is accurate. Product information and ingredients may change, please always read product labels carefully in addition to using the information provided by Erudus.

We do not accept liability for any inaccuracies or incorrect information contained on this site.
Please visit <http://www.erudus.com/terms-and-conditions> for full terms and conditions.