

Diet Coke Non-Barcoded Multipack Cans 24 x 330ml



(/Products/Zoom/9723118?shottypid=1&gpeRestricted=False)

Product data

EAN
5449000055293

Target market
GB

Components

Ingredients

Carbonated Water
Colour (Caramel E150d)
Sweeteners (Aspartame, Acesulfame K)
Natural Flavourings including Caffeine
Acids (Phosphoric Acid, Citric Acid)

Nutrition

	Per 100ml	Per 330ml (%*)
Energy	1.6kJ	5kJ
	0.4kcal	1kcal (0%)
Fat	0g	0g (0%)
of which saturates	0g	0g (0%)
Carbohydrate	0g	0g (0%)
of which sugars	0g	0g (0%)
Protein	0g	0g (0%)
Salt	0g	0g (0%)

2



Per 100ml Per 330ml (%*)

*Reference intake of an average adult (8400kJ/2000kcal)

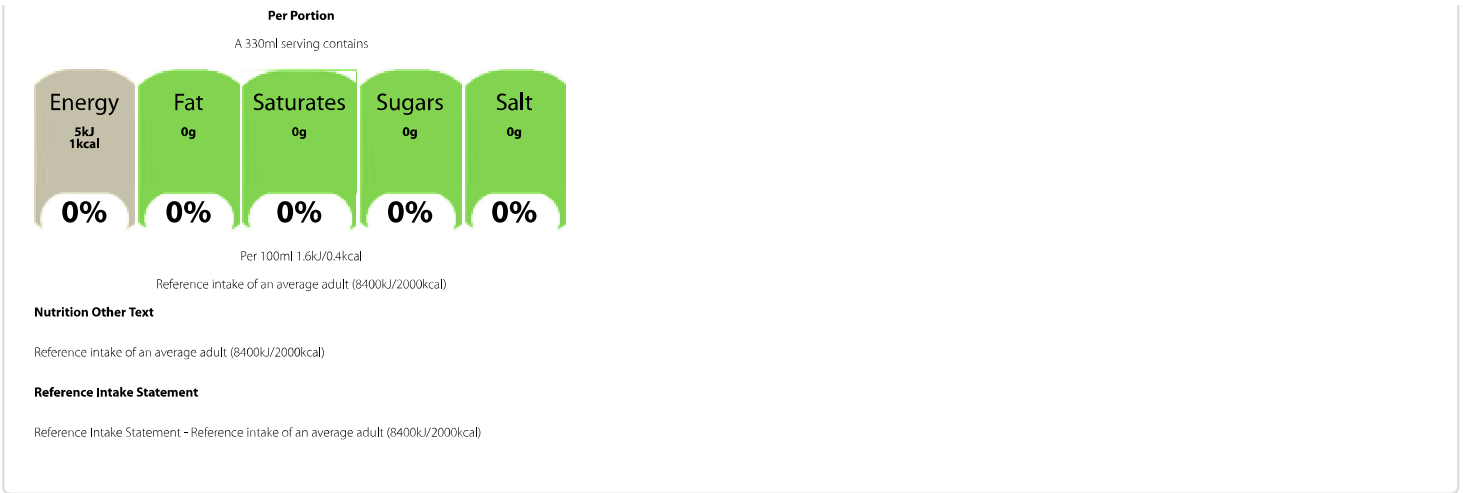
Calculated Nutrition

	per 100ml	Per 330ml
Energy (kJ)	1.6	5
Energy (kcal)	0.4	1
Fat (g)	0	0
of which saturates (g)	0	0
Carbohydrate (g)	0	0
of which sugars (g)	0	0
Protein (g)	0	0
Salt (g)	0	0

Structured Nutrition EU

	Per 100ml	Per 330ml	(%)
Energy	1.6 kJ	5 kJ	
Energy	0.4 kcal	1 kcal	0%
Fat	0 g	0 g	0%
of which saturates	0 g	0 g	0%
Carbohydrate	0 g	0 g	0%
of which sugars	0 g	0 g	0%
Protein	0 g	0 g	0%
Salt	0 g	0 g	0%

Front of Pack Nutrition



Product Description

Brand
Diet Coke

Features
No sugar or calories
This product is allergen free
This product is gluten free
This product is GMO free
This product is suitable for vegetarians/vegans

Standardised Brand
Brand - Diet Coke

Regulated Product Name
Sparkling Low Calorie Soft Drink with Plant Extracts with Sweeteners

Marketing

Company Name
CCEP

Company Address
CCEP GB,
UB8 1EZ.

Product Marketing
The great refreshing taste of Diet Coke with no sugar and no calories.
Add some sparkle to your day without the sugar or calories, with a crisp, refreshing Diet Coke!
Diet Coke is a sugar free, low calorie soft drink.
- No Sugar
- No Calories
- Contains plant extracts and sweeteners
- Contains a source of Phenylalanine
Serve over ice with a slice of lime.
Contains 24 individual 330ml cans.
Keep cold in the fridge.
Please recycle.

Brand Marketing
Coca-Cola and the Environment
Coca-Cola is committed to making a positive difference - to the health of the planet, consumers and the communities it serves. The company is working hard to reduce its impact on the environment in everything it does - growing more while using less, such as energy and water use, waste reduction and recycling - and by encouraging people to think more about the positive impact they can have on their local environment.



Other Information

Contains caffeine

This product is allergen free

Contains natural flavourings
Contains added colours
Contains added intense sweeteners

Further Description

A low calorie sparkling soft drink with no sugar and no calories

The great refreshing taste of Diet Coke with no sugar and no calories.

Add some sparkle to your day without the sugar or calories, with a crisp, refreshing Diet Coke!

Nutritional Claims

No sugar
No calories

Health & Lifestyle

Lifestyle

- Gluten free
- No Sugar
- Suitable for Vegans
- Suitable for Vegetarians

Allergy Advice

Celery - Free From
Cereals Containing Gluten - Free From
Crustaceans - Free From
Eggs - Free From
Fish - Free From
Lupin - Free From
Milk - Free From
Molluscs - Free From
Mustard - Free From
Nuts - Free From
Peanuts - Free From
Sesame - Free From
Soya - Free From
Sulphur Dioxide/Sulphites - Free From

Additives

Genetically Modified Ingredients - Free From
Sweeteners - Contains

Storage & Usage

Storage Type

Type

Ambient

Preparation and Usage

Best served chilled

Storage

Best before: See base of can.
Store cool and dry.



Brandbank Captured Pack Data

Pack Size

330ml C

Numeric Size

Numeric Size - 330

Recycling Info

Can - Metal - Widely Recycled

Unit (specific)

Unit (specific) - Millilitres

Pack Type

Type - Box

Recycling Other Text

Carton - Card - Widely Recycled

Units

Number of Units

Number of Units - 24

Customer Services

Manufacturers AddressCCEP GB,
UB8 1EZ.**Return To**CCEP GB,
UB8 1EZ,
0800 227711
Coca-Cola.co.uk**Telephone Helpline**

0800 227711

Web Address

Coca-Cola.co.uk

Extended Data

Safety Warning

Contains a Source of Phenylalanine.

Languages On Pack

- English



