

Diet Coke 500ml



(/Products/Zoom/9723107?shottypid=1&gpeRestricted=False)

Product data

EAN
5000112588392

Target market
GB

Components

Ingredients

Carbonated Water
Colour (Caramel E150d)
Sweeteners (Aspartame, Acesulfame K)
Natural Flavourings including Caffeine
Acids (Phosphoric Acid, Citric Acid)

Nutrition

	Per 100ml	Per 250ml (%*)
Energy	1.6kJ	4kJ
	0.4kcal	1kcal (0%)
Fat	0g	0g (0%)
of which saturates	0g	0g (0%)
Carbohydrate	0g	0g (0%)
of which sugars	0g	0g (0%)
Protein	0g	0g (0%)
Salt	0g	0g (0%)

2



Per 100ml Per 250ml (%)

*Reference intake of an average adult (8400kJ/2000kcal)

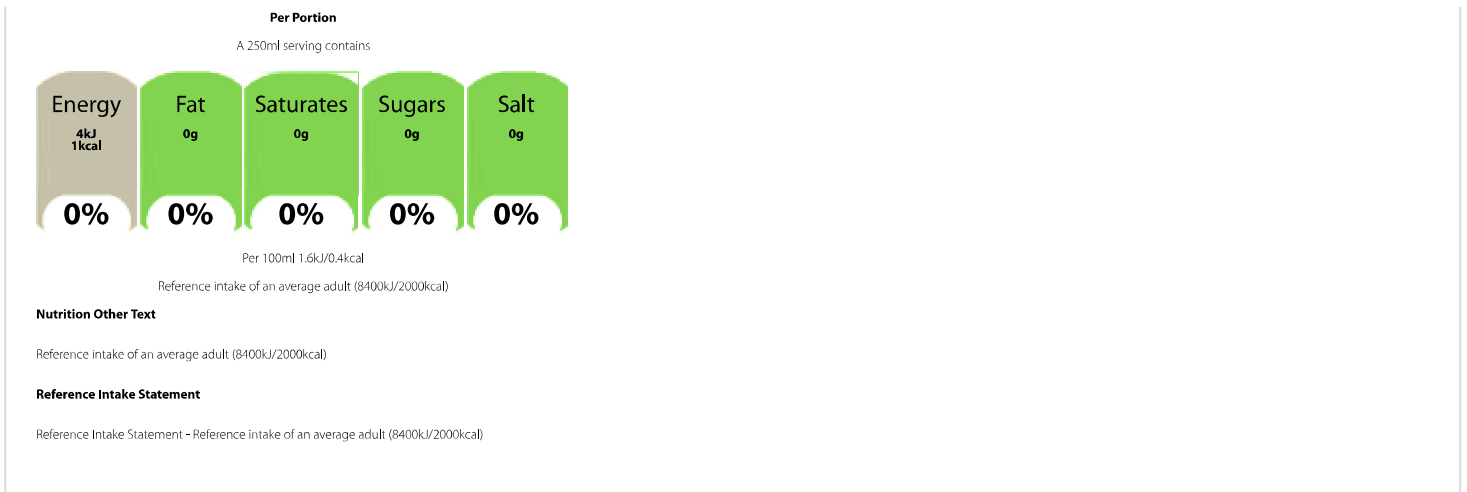
Calculated Nutrition

	per 100ml	Per 250ml
Energy (kJ)	1.6	4
Energy (kcal)	0.4	1
Fat (g)	0	0
of which saturates (g)	0	0
Carbohydrate (g)	0	0
of which sugars (g)	0	0
Protein (g)	0	0
Salt (g)	0	0

Structured Nutrition EU

	Per 100ml	Per 250ml	(%)
Energy	1.6 kJ	4 kJ	
Energy	0.4 kcal	1 kcal	0%
Fat	0 g	0 g	0%
of which saturates	0 g	0 g	0%
Carbohydrate	0 g	0 g	0%
of which sugars	0 g	0 g	0%
Protein	0 g	0 g	0%
Salt	0 g	0 g	0%

Front of Pack Nutrition



Product Description

Brand

Diet Coke

Features

No sugar and calories
This product is GMO free
This product is gluten free
This product is allergen free
This product is suitable for vegetarians/vegans

Standardised Brand

Brand - Diet Coke

Regulated Product Name

Sparkling Low Calorie Soft Drink with Plant Extracts with Sweeteners

Marketing

Company Name

CCEP

Company Address

CCEP GB,
UB8 1EZ.

Product Marketing

Love it light? Add some sparkle to your day, minus the calories with Diet Coke

Diet Coke is a sugar free, low calorie soft drink.
No Sugar
No Calories
Gluten-free, dairy-free and nut-free
Contains vegetables extracts and sweeteners

Serve over ice with a slice of lime.

Keep cold in the fridge.

Please recycle.

Brand Marketing

Coca-Cola and the Environment

Coca-Cola is committed to making a positive difference - to the health of the planet, consumers and the communities it serves. The company is working hard to reduce its impact on the environment in everything it does - growing more while using ' such as energy and water use, waste reduction and recycling - and by encouraging people to think more about the positive impact they can have on their local environment.

Other Information

Contains Caffeine

This product is allergen free

Contains Natural flavourings

Contains Added colours

Contains Added intense sweeteners

Further Description

A low calorie sparkling soft drink with no sugar and no calories

The great refreshing taste of Diet Coke with no sugar and no calories.

Add some sparkle to your day without the sugar or calories, with a crisp, refreshing Diet Coke!

Nutritional Claims

No sugar

No calories

Health & Lifestyle

Lifestyle

- Gluten free
- No Sugar
- Suitable for Vegans
- Suitable for Vegetarians

Allergy Advice

Celery - Free From

Cereals Containing Gluten - Free From

Crustaceans - Free From

Eggs - Free From

Fish - Free From

Gluten - Free From

Lupin - Free From

Milk - Free From

Molluscs - Free From

Mustard - Free From

Nuts - Free From

Peanuts - Free From

Sesame - Free From

Soya - Free From

Sulphur Dioxide/Sulphites - Free From

Additives

Genetically Modified Ingredients - Free From

Sweeteners - Contains

Storage & Usage

Storage Type

Type

Ambient

Preparation and Usage

Best served chilled

Storage

Best before: See side of cap or bottle neck.

Store cool and dry.



Brandbank Captured Pack Data

Pack Size

500ml e

Numeric Size

Numeric Size - 500

Recycling Info

Bottle - Plastic - Widely Recycled

Unit (specific)

Unit (specific) - Millilitres

Pack Type

Type - Plastic Bottle

Usage Other Text

500ml = 2 x 250ml servings

Customer Services

Manufacturers AddressCCEP GB,
UB8 1EZ.**Return To**CCEP GB,
UB8 1EZ.
0800 227711
Coca-Cola.co.uk**Telephone Helpline**

0800 227711

Web Address

Coca-Cola.co.uk

Extended Data

Safety Warning

Contains a Source of Phenylalanine.

Languages On Pack

- English



Diet Coke

Sparkling Low Calorie Soft Drink with Vegetable Extracts with Sweeteners

INGREDIENTS

Carbonated Water, Colour (Caramel E150d), Sweeteners (Aspartame, Acesulfame K), Natural Flavourings Including Caffeine, Phosphoric Acid, Citric Acid.

WARNING STATEMENT

Contains a Source of Phenylalanine.

Diet Coke

NUTRITION INFORMATION TYPICAL VALUES		
Per:	100ml	250ml (%)
Energy:	1.6kJ/ 0.4kcal	4kJ/ 1kcal (0%)
Fat:	0g	0g (0%)
of which saturates:	0g	0g (0%)
Carbohydrate:	0g	0g (0%)
of which sugars:	0g	0g (0%)
Protein:	0g	0g (0%)
Salt:	0g	0g (0%)

* Reference intake of an average adult (8600kJ/2000kcal)

250ml					
Energy	Fat	Saturates	Sugars	Salt	
4kJ 1kcal	0g	0g	0g	0g	
0%	0%	0%	0%	0%	

100ml: 1.6kJ/0.4kcal