

Fruice Fusions Tropical Juice Drink 250ml



(/Products/Zoom/9881525?shottypid=1&gpeRestricted=False)

Product data

EAN
5011020103355

Target market
IE

Components

Ingredients

Water
Fruit Juices and Purees from Concentrate 24% (Orange Juice 17%, Apricot Puree 3%, Guava Puree 2.5%, Mango Puree 1%, Passionfruit Juice 0.5%)
Sugar
Acid (Citric Acid)
Natural Flavourings
Sweetener (Steviol Glycosides)
Vitamins (C, B6, B12, D)

Nutrition

	Per 100ml	250ml	(%)
Energy	91kJ	228kJ	
	22kcal	54kcal	(3%)
Fat	0g	0g	(0%)
of which saturates	0g	0g	(0%)
Carbohydrate	4.9g	12.3g	(5%)
of which sugars	4.9g	12.3g	(14%)
Protein	0.2g	0.5g	(1%)

2



	Per 100ml	250ml	(%)
Salt	0.01g	0.03g	(<1%)
Vitamins	(%**)	(%**)	
Vitamin C	6mg (7.5%)	15mg (19%)	
Vitamin B6	0.11mg (7.5%)	0.26mg (19%)	
Vitamin B12	0.19µg (7.5%)	0.47µg (19%)	
Vitamin D	0.38µg (7.5%)	0.94µg (19%)	
* Reference intake of an average adult (8400kJ/2000kcal)			
**Nutrient Reference Value			

Calculated Nutrition

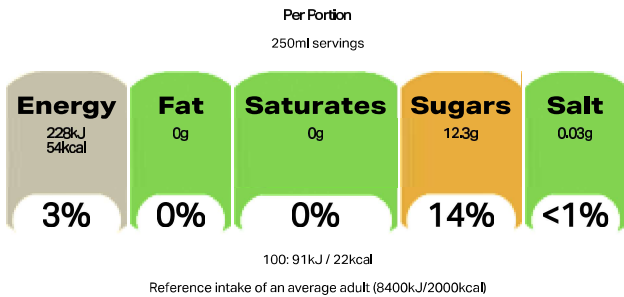
	per 100ml	250ml
Energy (kJ)	91	228
Energy (kcal)	22	54
Fat (g)	0	0
of which saturates (g)	0	0
Carbohydrate (g)	4.9	12.3
of which sugars (g)	4.9	12.3
Protein (g)	0.2	0.5
Salt (g)	0.01	0.03
Vitamin B6 (mg)	0.11	0.26
Vitamin B12 (µg)	0.19	0.47
Vitamin C (mg)	6	15
Vitamin D (µg)	0.38	0.94

Structured Nutrition EU

	Per 100ml	(%)	250ml	(%)
Energy	91 kJ		228 kJ	

	Per 100ml	(%)	250ml	(%)
Energy	22 kcal		54 kcal	3%
Fat	0 g		0 g	0%
of which saturates	0 g		0 g	0%
Carbohydrate	4.9 g		12.3 g	5%
of which sugars	4.9 g		12.3 g	14%
Protein	0.2 g		0.5 g	1%
Salt	0.01 g		0.03 g	< 1%
Vitamin B6	0.11 mg	7.5%	0.26 mg	19%
Vitamin B12	0.19 µg	7.5%	0.47 µg	19%
Vitamin C	6 mg	7.5%	15 mg	19%
Vitamin D	0.38 µg	7.5%	0.94 µg	19%

Front of Pack Nutrition



Nutrition Other Text

Reference intake of an average adult (8400kJ/2000kcal)
Nutrient Reference Value

Reference Intake Statement

Reference Intake Statement - Reference intake of an average adult (8400kJ/2000kcal)

Product Description

Brand

Fruice

Features

With Added Vitamins
24% Juice
Calories 54 Per 250ml

Standardised Brand

Brand - Fruice

Regulated Product Name



Tropical Juice Drink with Sugars and Sweeteners. With Added Vitamins.

Marketing

Company Name

Coca-Cola HBC N. Ireland Ltd / Coca-Cola HBC Ireland Ltd

Company Address

Coca-Cola HBC N. Ireland Ltd,
Lisburn,
BT28 2SZ.

Coca-Cola HBC Ireland Ltd,
Ballycoolin,
Dublin 11.

Third Party Logos

- Green Dot
- Love Irish Food

Product Marketing

Let the sunshine in! A totally tropical fusion of exotic fruits, enriched with vitamins.

Health & Lifestyle

Additives

Sweeteners - Contains

Storage & Usage

Storage Type

Type

Ambient

Preparation and Usage

Chill and shake well.

Storage

Best Before End: See top of carton.
After opening, this product should be refrigerated and consumed within 3 days.

Durability after Opening

Consume Within - Days

3

2



Brandbank Captured Pack Data

Pack Size

250ml e

Numeric Size

Numeric Size - 250

Unit (specific)

Unit (specific) - Millilitres

Pack Type

Type - Carton

Customer Services

Manufacturers Address

Coca-Cola HBC N. Ireland Ltd,
Lisburn,
BT28 2SZ.

Coca-Cola HBC Ireland Ltd,
Ballycoolin,
Dublin 11.

Return To

Coca-Cola HBC N. Ireland Ltd,
Lisburn,
BT28 2SZ.

Coca-Cola HBC Ireland Ltd,
Ballycoolin,
Dublin 11.

Consumer Careline:
(ROI): 1800-317318
(NI): 0800-317318

Telephone Helpline

(ROI): 1800-317318
(NI): 0800-317318

Extended Data

Languages On Pack

- English

Description Breakdown

Functional Name - Juice Drink
Variant - Tropical

