

Changed Feb 26, 2024 11:58

Reviewed Feb 26, 2024 11:58

Erudus ID 2a3cf20ecbb144ba92c0a6b4693d79c8

Version 3.0

This specification is published by [Erudus](#) for Caterforce

# Eden Grove 10841 Pure Apple Juice From Concentrate 27x200ml

Eden Grove 10841 Pure Apple Juice From Concentrate 27x200ml

## PRODUCT DESCRIPTION

Apple Juice from Concentrate

Brand	Caterforce
Label Own Label Code	10841
Product Type	Drink
Product Category	Juices and Cordials
Storage Type	Ambient
Erudus ID	2a3cf20ecbb144ba92c0a6b4693d79c8
Specification Type	Drinks
Inner Component GTIN	5060480566736
Outer Case GTIN	5060480566743



## INGREDIENTS

### Ingredient Declaration

Apple Juice from Concentrate (100%)

## ALLERGENS

Product Contains:

<b>Celery/Celeriac</b>	No	<b>Mustard</b>	No
<b>Cereals Containing Gluten</b>	No	<b>Nuts (Tree)</b>	No
<b>Barley</b>	No	<b>Almond nuts</b>	No
<b>Oats</b>	No	<b>Brazil nuts</b>	No
<b>Rye</b>	No	<b>Cashew nuts</b>	No
<b>Wheat (including Spelt and Khorasan)</b>	No	<b>Hazelnuts</b>	No
<b>Crustacea</b>	No	<b>Macadamia (Queensland) nuts</b>	No
<b>Eggs</b>	No	<b>Pecan nuts</b>	No
<b>Fish</b>	No	<b>Pistachio nuts</b>	No
<b>Lupin</b>	No	<b>Walnuts</b>	No
<b>Milk</b>	No	<b>Peanuts</b>	No
<b>Molluscs</b>	No	<b>Sesame Seeds</b>	No
		<b>Soybeans</b>	No
		<b>Sulphur Dioxide and Sulphites</b>	No

### Additional Allergen Information

No allergens on site.

## SUPPLEMENTARY INGREDIENT INFORMATION

<b>Palm Oil</b>	No
<b>Hydrogenated Vegetable Oil/Fat</b>	No
<b>GM Protein/DNA</b>	No

ADDITIVES

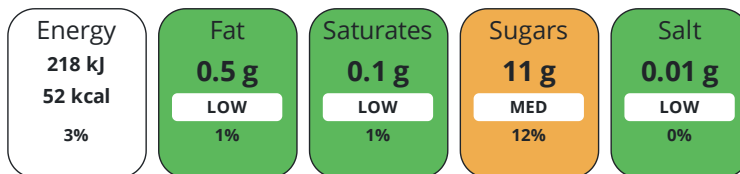
Product Contains:

<b>Artificial Antioxidants</b>	No	<b>Artificial Flavourings</b>	No
<b>Artificial Colours</b>	No	<b>Artificial Preservatives</b>	No
<b>Artificial Flavour Enhancers</b>	No	<b>Artificial Sweeteners</b>	No
<b>Vegan Diet</b>	Suitable for	<b>Vegetarian Diet</b>	Suitable for
<b>Halal Diet</b>	No	<b>Kosher Diet</b>	No

DIET SUITABILITY

NUTRITIONAL INFORMATION

Each 100g/ml portion contains:



of your reference intake.

Typical values per 100g/ml : Energy 52kcal / 218kJ

Nutrient	per 100ml	RI per 100ml	per 200ml serving	RI per 200ml serving
<b>Energy (kJ)</b>	218 kJ	3%	436 kJ	5%
<b>Energy (kcal)</b>	52 kcal	3%	104 kcal	5%
<b>Fat</b>	< 0.5 g	1%	1 g	1%
<b>of which Saturates</b>	< 0.1 g	1%	0.2 g	1%
<b>Carbohydrate</b>	11 g	4%	22 g	8%
<b>of which Sugars</b>	11 g	12%	22 g	24%
<b>of which Polyols</b>	0 g		-	
<b>of which Starch</b>	0 g		-	
<b>Fibre</b>	< 0.5 g		1 g	
<b>Protein</b>	< 0.5 g	1%	1 g	2%
<b>Salt</b>	< 0.01 g	0%	-	

Serving Size 200 ml

VITAMINS AND MINERALS

Nutrient	per 100ml	RI per 100ml	per 200ml serving	RI per 200ml serving
<b>Vitamin A</b>	0 µg	0%	-	
<b>Vitamin C</b>	0 mg	0%	-	
<b>Folate/Folic Acid</b>	0 µg	0%	-	
<b>Calcium</b>	0 mg	0%	-	
<b>Iron</b>	0 mg	0%	-	
<b>Zinc</b>	0 mg	0%	-	

SUPPLEMENTARY NUTRITIONAL INFORMATION

<b>Cholesterol per 100 g/ml (UK/FR)</b>	0 g
<b>Trans Fats per 100 g/ml</b>	0 g
<b>Fat Percentage in Dry Matter per 100 g/ml</b>	0 %
<b>Non Milk Extrinsic Sugars per 100 g/ml</b>	0 g

HFSS (HIGH IN FAT, SALT AND SUGAR)

<b>HFSS Status</b>	Yes
--------------------	-----

HANDLING &  
STORAGE  
INFORMATION

**Directions For Use**

Best served chilled. Shake well before use.

**Storage Instructions**

Store in a cool dry place. Once opened, keep refrigerated and consume within 3 days and by Best Before End date.

**Shelf Life from Time of Production** 270 Days **Exempt From Shelf Life Labelling** No

**BRCGS Certified**

ACCREDITATIONS/  
CERTIFICATIONS/  
ASSURANCE  
SCHEMES  
ORIGIN

**Product Country of Origin/Place of** Ireland

**Provenance**

**Additional Origin Details**

Packed for Caterforce Ltd, Cheshire, SK10 1LT and Caterforce Ltd, Suite 105, 3 Lombard Street East, Dublin 2, Ireland.

Standards Testing

PRODUCT  
CHARACTERISTICS

**Do you undertake trend analysis of microbiological results?** No **Is shelf life testing undertaken?** No

Microbiological Standards

Organism	Description	Frequency	Target	Maximum	Sample (g or ml)
Coliforms (cfu/g or ml)		Every Batch	<1	0	1000
Total Viable Count (TVC) (cfu/g or ml)		Every Batch	<1	1	1000
Yeast (cfu/g or ml)		Every Batch	<1	1	1000
Moulds (cfu/g or ml)		Every Batch	<1	1	1000

Analytical Standards

Test	Description	Frequency	Target	Range	Sample (g or ml)
Brix (°Bx)		Every Batch	=11.3	11.2 to 11.4	1000

CONFIGURATION

Case Configuration

Inner Pack Configuration

**Total Quantity of Inner Components in** 27 Units

**Outer Case**

**Is the Outer Case Splittable?** No

PRODUCT  
WEIGHTS

Inner Component

**Inner Component Volume** 200 ml

**Net Drained Weight** 0 g

Outer Case

**Outer Case Gross Weight** 5.7 kg

**Outer Case Net Weight** 5.4 kg

PRODUCT  
DIMENSIONS

Inner Component

**Inner Component Depth** 173 mm

**Inner Component Width** 26 mm

**Inner Component Height** 174 mm

Outer Case

**Outer Case Depth** 369 mm

**Outer Case Width** 122 mm

**Outer Case Height** 153 mm

PALLET INFORMATION

<b>Quantity of Cases Per Pallet Layer</b>	17 Cases	<b>Pallet Height</b>	1.18 MTR
<b>Quantity of Layers Per Pallet</b>	9 Layers	<b>Pallet Gross Weight</b>	901.13 kg
<b>Quantity of Cases Per Pallet</b>	153 Cases		

PACKAGING

Inner Component Packaging

Type	Materials	Weight	Recycled Plastic %	Recyclable	Returnable	Composite
Carton	Paper/Cardboard	8.7 g	- %			

Outer Case Packaging

Type	Materials	Weight	Recycled Plastic %	Recyclable	Returnable	Composite
Case	Plastic	15 g	100.00 %			
Case	Paper/Cardboard	58.9 g	- %			

Transport Packaging

Type	Materials	Weight	Recycled Plastic %	Recyclable	Returnable	Composite
Other	Plastic	30 g	0.00 %		Yes	
Other	Paper/Cardboard	4 g	- %		Yes	
Other	Wood	28000 g	- %		Yes	

OTHER INFORMATION

**Intrastat/Taric Code** 20097199

CONTACT INFORMATION

ADDRESS

Caterforce  
United Kingdom

P: (Phone) 01625 440188

The information on the [Erudus System](#) has been supplied by the manufacturers of the products and, whilst the owners of the Erudus System take steps to ensure the information is regularly updated, they give no warranty and no guarantee that the information is accurate. Product information and ingredients may change, please always read product labels carefully in addition to using the information provided by Erudus.

We do not accept liability for any inaccuracies or incorrect information contained on this site.  
Please visit <http://www.erudus.com/terms-and-conditions> for full terms and conditions.