

Changed Feb 26, 2024 11:52

Reviewed Feb 26, 2024 11:52

Erudus ID 3c5ad4b72a724d69a4175e463dce75fc

Version 3.0



This specification is published by [Erudus](#) for Caterforce

Eden Grove 10782 Pure Orange Juice from Concentrate 12x1L

Eden Grove 10782 Pure Orange Juice From Concentrate 12x1litre

PRODUCT DESCRIPTION

Orange Juice from Concentrate

Brand	Caterforce
Label Own Label Code	10782
Product Type	Drink
Product Category	Juices and Cordials
Storage Type	Ambient
Erudus ID	3c5ad4b72a724d69a4175e463dce75fc
Specification Type	Drinks
Inner Component GTIN	5060480565661
Outer Case GTIN	5060480565654



INGREDIENTS

Ingredient Declaration

Orange juice from concentrate (100%).

ALLERGENS

Product Contains:

Celery/Celeriac	No	Mustard	No
Cereals Containing Gluten	No	Nuts (Tree)	No
Barley	No	Almond nuts	No
Oats	No	Brazil nuts	No
Rye	No	Cashew nuts	No
Wheat (including Spelt and Khorasan)	No	Hazelnuts	No
Crustacea	No	Macadamia (Queensland) nuts	No
Eggs	No	Pecan nuts	No
Fish	No	Pistachio nuts	No
Lupin	No	Walnuts	No
Milk	No	Peanuts	No
Molluscs	No	Sesame Seeds	No
		Soybeans	No
		Sulphur Dioxide and Sulphites	No

Additional Allergen Information

No allergens on site.

SUPPLEMENTARY INGREDIENT INFORMATION

Palm Oil	No
Hydrogenated Vegetable Oil/Fat	No
GM Protein/DNA	No

ADDITIVES

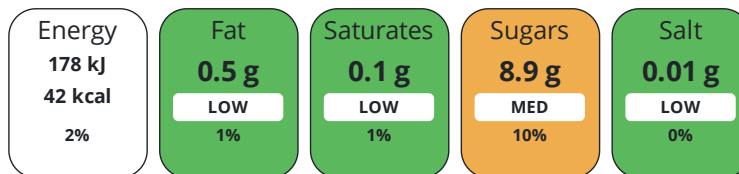
Product Contains:

Artificial Antioxidants	No	Artificial Flavourings	No
Artificial Colours	No	Artificial Preservatives	No
Artificial Flavour Enhancers	No	Artificial Sweeteners	No
Vegan Diet	Suitable for	Vegetarian Diet	Suitable for
Halal Diet	No	Kosher Diet	No

DIET
SUITABILITY

NUTRITIONAL
INFORMATION

Each 100g/ml portion contains:



of your reference intake.

Typical values per 100g/ml : Energy 42kcal / 178kj

Nutrient	per 100ml	RI per 100ml	per 150ml serving	RI per 150ml serving
Energy (kJ)	178 kJ	2%	267 kJ	3%
Energy (kcal)	42 kcal	2%	63 kcal	3%
Fat	< 0.5 g	1%	0.8 g	1%
of which Saturates	< 0.1 g	1%	0.2 g	1%
of which Mono-unsaturates	0 g		-	
of which Polyunsaturates	0 g		-	
Carbohydrate	8.9 g	3%	13.4 g	5%
of which Sugars	8.9 g	10%	13.4 g	15%
of which Polyols	0 g		-	
of which Starch	0 g		-	
Fibre	< 0.5 g		0.8 g	
Protein	0.5 g	1%	0.8 g	2%
Salt	< 0.01 g	0%	-	
Sodium	< 0.01 mg		-	
Serving Size	150 ml			

VITAMINS AND
MINERALS

Nutrient	per 100ml	RI per 100ml	per 150ml serving	RI per 150ml serving
Vitamin A	0 µg	0%	-	
Vitamin C	0 mg	0%	-	
Folate/Folic Acid	0 µg	0%	-	
Calcium	0 mg	0%	-	
Iron	0 mg	0%	-	
Zinc	0 mg	0%	-	

SUPPLEMENTARY
NUTRITIONAL
INFORMATION

Cholesterol per 100 g/ml (UK/FR)	0 g
Trans Fats per 100 g/ml	0 g
Fat Percentage in Dry Matter per 100 g/ml	0 %
Non Milk Extrinsic Sugars per 100 g/ml	0 g

HANDLING &
STORAGE
INFORMATION

Directions For Use
Best served chilled. Shake well before use.

Storage Instructions

Store in a cool, dry place. Once opened, keep refrigerated and consume within 3 days and by Best Before End date.

Shelf Life from Time of Production	270 Days	Exempt From Shelf Life Labelling	No
---	----------	---	----

ACCREDITATIONS/
CERTIFICATIONS/
ASSURANCE
SCHEMES
ORIGIN

BRCGS Certified

Product Country of Origin/Place of Ireland

Provenance

Additional Origin Details

Packed for Caterforce Ltd, Cheshire, SK10 1LT and Caterforce Ltd, Suite 105, 3 Lombard Street East, Dublin 2, Ireland.

Standards Testing

PRODUCT
CHARACTERISTICS

Do you undertake trend analysis of microbiological results?	Yes	Is shelf life testing undertaken?	Yes
--	-----	--	-----

Microbiological Standards

Organism	Description	Frequency	Target	Maximum	Sample (g or ml)
Coliforms (cfu/g or ml)		Every Batch	<1	0	1000
Total Viable Count (TVC) (cfu/g or ml)		Every Batch	<1	1	1000
Yeast (cfu/g or ml)		Every Batch	<1	1	1000
Moulds (cfu/g or ml)		Every Batch	<1	1	1000

Analytical Standards

Test	Description	Frequency	Target	Range	Sample (g or ml)
Brix (°Bx)		Every Batch	<11.3	11.2 to 11.4	1000

CONFIGURATION

Case Configuration Inner Pack Configuration

Total Quantity of Inner Components in Outer Case	12 Units
Is the Outer Case Splittable?	No

PRODUCT
WEIGHTS

Inner Component	
Inner Component Volume	1 litre
Net Drained Weight	0 g
Outer Case	
Outer Case Gross Weight	12.45 kg
Outer Case Net Weight	12 kg

PRODUCT DIMENSIONS

Inner Component	
Inner Component Depth	270 mm
Inner Component Width	49 mm
Inner Component Height	305 mm
Outer Case	
Outer Case Depth	364 mm
Outer Case Width	190 mm
Outer Case Height	200 mm

PALLET INFORMATION

Quantity of Cases Per Pallet Layer	15 Cases	Pallet Height	1.13 MTR
Quantity of Layers Per Pallet	5 Layers	Pallet Gross Weight	962.64 kg
Quantity of Cases Per Pallet	75 Cases		

PACKAGING

Inner Component Packaging						
Type	Materials	Weight	Recycled Plastic %	Recyclable	Returnable	Composite
Carton	Plastic	1.7 g	0.00 %			
Carton	Paper/Cardboard	28.3 g	- %			
Outer Case Packaging						
Type	Materials	Weight	Recycled Plastic %	Recyclable	Returnable	Composite
Case	Plastic	5 g	100.00 %			
Case	Paper/Cardboard	88.6 g	- %			
Transport Packaging						
Type	Materials	Weight	Recycled Plastic %	Recyclable	Returnable	Composite
Other	Plastic	10 g	0.00 %		Yes	
Pallet	Wood	28000 g	- %			

OTHER INFORMATION

Intrastat/Taric Code	20091200
-----------------------------	----------

CONTACT INFORMATION

ADDRESS	
Caterforce United Kingdom	
P: (Phone) 01625 440188	

The information on the [Erudus System](#) has been supplied by the manufacturers of the products and, whilst the owners of the Erudus System take steps to ensure the information is regularly updated, they give no warranty and no guarantee that the information is accurate. Product information and ingredients may change, please always read product labels carefully in addition to using the information provided by Erudus.

We do not accept liability for any inaccuracies or incorrect information contained on this site.
Please visit <http://www.erudus.com/terms-and-conditions> for full terms and conditions.