

Fanta Zero Orange 500ml



EAN
54491397

Target market(s)
IE

Components

Ingredients

Carbonated Water
Orange Juice from Concentrate (7%)
Citrus Extract (1%)
Citric Acid
Sweeteners (Acesulfame K, Aspartame, Sodium Saccharin)
Preservative (Potassium Sorbate)
Natural Orange Flavouring with other Natural Flavourings
Antioxidant (Ascorbic Acid)
Stabiliser (Guar Gum)
Colour (Carotenes)
Fruit and Vegetable Concentrates (Blackcurrant and Blackcarrot)

Nutrition

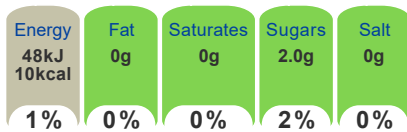
	Per 100ml serving
Energy	18.6
Energy	4.4
Fat	0
of which Saturates	0
Carbohydrate	0.8
of which Sugars	0.8
Fibre	0
Protein	0
Salt	0

Calculated Nutrition

	per 100ml
Energy (kJ)	18.6
Energy (kcal)	4.4
Fat (g)	0
of which saturates (g)	0
Carbohydrate (g)	0.8
of which sugars (g)	0.8
Fibre (g)	0
Protein (g)	0
Salt (g)	0

Front of Pack Nutrition

Per Portion
250ml servings



100ml: 19kJ/4kcal

Reference intake of an average adult (8400kJ/2000kcal)

HFSS Indicator

HFSS Indicator - Not HFSS

Product Description

Brand

Fanta

Features

Low calorie
With orange juice

Standardised Brand

Brand - Fanta

Regulated Product Name

Sparkling Low Calorie Orange Fruit Drink with Sweeteners

Marketing

Company Name

Coca-Cola HBC Northern Ireland Ltd. / Coca-Cola HBC Ireland Ltd.

Company Address

Coca-Cola HBC Northern Ireland Ltd.,
12 Lissue Road,
Lisburn,
BT28 2SZ.

Coca-Cola HBC Ireland Ltd.,
Ballycoolin,
Dublin 11.

Third Party Logos

- Green Dot

Other Information

© 2014 The Coca-Cola Company

Nutritional Claims

Low calorie

Health & Lifestyle

Lifestyle

- Suitable for Diabetics
- Suitable for Sufferers of Lactose Intolerance
- Suitable for Vegans
- Suitable for Vegetarians

Additives

Antioxidants - Contains
Artificial Preservatives - Contains
Artificial Sweeteners - Contains
Aspartame - Contains
Colours - Contains
Sweeteners - Contains
Tartrazine - Contains

Storage & Usage

Storage Type

Type

Ambient

Preparation and Usage

Best served chilled

Storage

Best before end: See side of cap or bottle neck for date.
Store cool and dry.

Brandbank Captured Pack Data

Pack Size

500ml e

Numeric Size

Numeric Size - 500

Recycling Info

Bottle - Certified as Recyclable

Packaging Material Marks

Bottle - 1 - PET

Pack Type

Type - Plastic Bottle

Usage Count

Number of uses - Servings

2

Usage Other Text

500ml = 2 x 250ml glass

Customer Supplied Pack Data

Supplied Dimension

Shelf Height (mm) (mm)	Shelf Width (mm) (mm)	Shelf Depth (mm) (mm)
229	66	66

(GS1 package measurement rules)

Supplied Weight

Gross Weight (g) - 520

Supplied Unit Merchandising

Height - 229
Width - 66
Depth - 66
Unit Stable - Yes
Unit Stackable - Yes
Merchandise Multiple Ways - Yes

Supplied Case

Height - 229
Width - 264
Depth - 398
Weight - 1267
Unit Count - 24
GTIN - 05449000008251

Customer Services

Manufacturers Address

Coca-Cola HBC Northern Ireland Ltd.,
12 Lissue Road,
Lisburn,
BT28 2SZ.

Coca-Cola HBC Ireland Ltd.,
Ballycoolin,
Dublin 11.

Return To

Coca-Cola HBC Northern Ireland Ltd.,
12 Lissue Road,
Lisburn,
BT28 2SZ.

Coca-Cola HBC Ireland Ltd.,
Ballycoolin,
Dublin 11.

NI: 0-800-317318
ROI: 1-800-317318
www.coca-colabottlers.com

Telephone Helpline

NI: 0-800-317318
ROI: 1-800-317318

Web Address

www.coca-colabottlers.com

Extended Data

Safety Warning

This is a pressurised container, open by hand.

Contains a Source of Phenylalanine

Description Breakdown

Variant - Orange

Import Classification

Commodity Code - 22021000

Packaging Weight

Bottle - Grams

24

Hand Separable

Hand Separable - True

