

Changed Jan 11, 2024 10:00

Reviewed Jan 11, 2024 10:00

Erudus ID 624e60cb3fcc4239af0a652095a93f0c

Version 2.0

This specification is published by [Erudus](#) for Country Range Group

Raspberry Flavour Jelly Crystals

Raspberry Jelly Crystals 4x3.5kg

PRODUCT DESCRIPTION

Raspberry Jelly Crystals

Brand	Country Range Group
Label Own Label Code	JCRA14CR
Product Type	Food
Product Category	Desserts
Storage Type	Ambient
Erudus ID	624e60cb3fcc4239af0a652095a93f0c
Specification Type	Generic



Inner Component GTIN	5023616467352
Outer Case GTIN	05023616467307

INGREDIENTS

Ingredient Declaration

Sugar, Beef Gelatine, Colour (Beetroot Red), Acidity Regulator (Citric Acid), Antioxidant (Trisodium Citrate), Natural Flavouring.

ALLERGENS

Product Contains:

Celery/Celeriac	No	Mustard	No
Cereals Containing Gluten	No	Nuts (Tree)	No
Barley	No	Almond nuts	No
Oats	No	Brazil nuts	No
Rye	No	Cashew nuts	No
Wheat (including Spelt and Khorasan)	No	Hazelnuts	No
Crustacea	No	Macadamia (Queensland) nuts	No
Eggs	No	Pecan nuts	No
Fish	No	Pistachio nuts	No
Lupin	No	Walnuts	No
Milk	No	Peanuts	No
Molluscs	No	Sesame Seeds	No
		Soybeans	No
		Sulphur Dioxide and Sulphites	No
SUPPLEMENTARY INGREDIENT INFORMATION		Alcoholic Strength %Vol (ABV)	0 % Vol
Palm Oil	No		
Hydrogenated Vegetable Oil/Fat	No		
GM Protein/DNA	No		

ADDITIVES

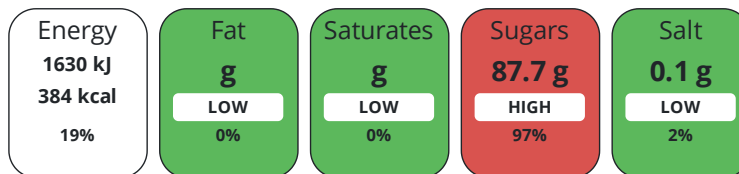
Product Contains:

Artificial Antioxidants	No	Artificial Flavourings	No
Artificial Colours	No	Artificial Preservatives	No
Artificial Flavour Enhancers	No	Artificial Sweeteners	No
Vegan Diet	No	Vegetarian Diet	No
Halal Diet	No	Kosher Diet	No

DIET
SUITABILITY

NUTRITIONAL
INFORMATION

Each 100g/ml portion contains:



of your reference intake.

Typical values per 100g/ml : Energy 384kcal / 1630kJ

Nutrient	per 100g	RI per 100g	per 45g serving	RI per 45g serving
Energy (kJ)	1630 kJ	19%	733.5 kJ	9%
Energy (kcal)	384 kcal	19%	172.8 kcal	9%
Fat	0 g	0%	-	
of which Saturates	0 g	0%	-	
of which Mono-unsaturates	0 g		-	
of which Polyunsaturates	0 g		-	
Carbohydrate	89.1 g	34%	40.1 g	15%
of which Sugars	87.7 g	97%	39.5 g	44%
of which Polyols	0 g		-	
of which Starch	0 g		-	
Fibre	0 g		-	
Protein	7.1 g	14%	3.2 g	6%
Salt	0.1 g	2%	-	
Sodium	42 mg		18.9 mg	
Serving Size	45 g			

VITAMINS AND
MINERALS

Nutrient	per 100g	RI per 100g	per 45g serving	RI per 45g serving
Vitamin A	0 µg	0%	-	
Vitamin C	0 mg	0%	-	
Folate/Folic Acid	0 µg	0%	-	
Calcium	0 mg	0%	-	
Iron	0 mg	0%	-	
Zinc	0 mg	0%	-	

SUPPLEMENTARY
NUTRITIONAL
INFORMATION

Cholesterol per 100 g/ml (UK/FR)	0 g
Trans Fats per 100 g/ml	0 g
Non Milk Extrinsic Sugars per 100 g/ml	0 g

HANDLING &
STORAGE
INFORMATION

Directions For Use

1. Add boiling water to jelly crystals and stir until completely dissolved. 2. Then add the required volume of cold water. 3. Leave to set in a cool place - preferably a refrigerator. To chop and cube jelly: Make up the jelly and pour into a sandwich tin. Allow to set. Turn out on to wet greaseproof paper. Use a sharp knife dipped in to hot water to either chop finely or to cut into cubes. To whisk jelly: Chill jelly until thick, but not set. Beat with an electric mixer or use a hand whisk. When the jelly is frothy, thick and doubled in volume, chill until set. Yield Guide: To make 1 litre (1 and 3/4 pints): Jelly Crystals: 175g Boiling Water: 400ml (approx. 2/3 pint) Cold Water: 600ml (approx. 1 pint) To make 35 pints (approx. 19.9 litres) Jelly Crystals: 3.5kg (whole bag) Boiling Water: 13 pints (7.4 litres) Cold Water: 22 pints (12.5 litres)

Storage Instructions

Store in a cool, dry place. Once opened, reseal and use within 30 days. After preparation, keep refrigerated and consume within 24 hours.

Shelf Life from Time of Production	365 Days	Exempt From Shelf Life Labelling	No
---	----------	---	----

ACCREDITATIONS/
CERTIFICATIONS/
ASSURANCE
SCHEMES



ORIGIN

Product Country of Origin/Place of Provenance	United Kingdom
--	----------------

PRODUCT
CHARACTERISTICS
CONFIGURATION

Standards Testing	
Case Configuration	Inner Pack Configuration
Total Quantity of Inner Components in Outer Case	4 Units
Is the Outer Case Splittable?	Yes

PRODUCT
WEIGHTS

Inner Component	
Variable Weight Consumer Item	No
Inner Component Weight	3.5 kg
Outer Case	
Outer Case Gross Weight	14.5 kg
Outer Case Net Weight	0 kg

PRODUCT
DIMENSIONS

Inner Component	
Inner Component Depth	0 mm
Inner Component Width	525 mm
Inner Component Height	460 mm
Outer Case	
Outer Case Depth	0 mm
Outer Case Width	0 mm
Outer Case Height	0 mm

PALLET
INFORMATION

Quantity of Cases Per Pallet Layer	9 Cases	Pallet Height	2.1 MTR
Quantity of Layers Per Pallet	6 Layers	Pallet Gross Weight	1000 kg
Quantity of Cases Per Pallet	54 Cases		

PACKAGING

Inner Component Packaging						
Type	Materials	Weight	Recycled Plastic %	Recyclable	Returnable	Composite
Film	Plastic	15 g	- %			

Transport Packaging

Type	Materials	Weight	Recycled Plastic %	Recyclable	Returnable	Composite
Other	Plastic	15 g	- %		Yes	
Other	Wood	25000 g	- %		Yes	

OTHER INFORMATION

Intrastat/Taric Code 2007999770

Manufacturer Comments

N/A

CONTACT INFORMATION

ADDRESS

Country Range Group
Accrington
Lancs
United Kingdom

P: (Phone) 0845 209 3777

The information on the [Erudus System](#) has been supplied by the manufacturers of the products and, whilst the owners of the Erudus System take steps to ensure the information is regularly updated, they give no warranty and no guarantee that the information is accurate. Product information and ingredients may change, please always read product labels carefully in addition to using the information provided by Erudus.

We do not accept liability for any inaccuracies or incorrect information contained on this site.
Please visit <http://www.erudus.com/terms-and-conditions> for full terms and conditions.