

This specification is published by [Erudus](#) for Caterforce

S8083

CSBC 10853 Chef's Selections Custard Powder Mix 4 x 3kg

Custard Powder Mix 4x3kg

PRODUCT DESCRIPTION

Custard powder for making pouring custard and custard to be used in trifles. Add sugar and milk.

Brand	Caterforce
Label Own Label Code	10853
Product Type	Food
Product Category	Bakery - General
Storage Type	Ambient
Erudus ID	2fc12453f00f4ea0afe1a2518b87df7b
Specification Type	Legacy
Inner Component GTIN	5060480567016
Outer Case GTIN	5060480567023



INGREDIENTS

Ingredient Declaration

Maize Starch, Colour (Annatto Norbixin), Flavouring (contains Lactose (**MILK**)).

ALLERGENS

Product Contains:

Celery/Celeriac	No	Mustard	No
Cereals Containing Gluten	May Contain	Nuts (Tree)	No
Barley	No	Almond nuts	No
Oats	No	Brazil nuts	No
Rye	No	Cashew nuts	No
Wheat (including Spelt and Khorasan)	May Contain	Hazelnuts	No
Crustacea	No	Macadamia (Queensland) nuts	No
Eggs	May Contain	Pecan nuts	No
Fish	No	Pistachio nuts	No
Lupin	No	Walnuts	No
Milk	Yes	Peanuts	No
Molluscs	No	Sesame Seeds	No
		Soybeans	May Contain
		Sulphur Dioxide and Sulphites	No

Risk Source:

Additional Allergen Information

ALLERGEN INFORMATION: For allergies, see ingredients in BOLD. May also contain egg, soya, gluten (from wheat).

SUPPLEMENTARY INGREDIENT INFORMATION

Palm Oil	No
Hydrogenated Vegetable Oil/Fat	No
GM Protein/DNA	No

ADDITIVES

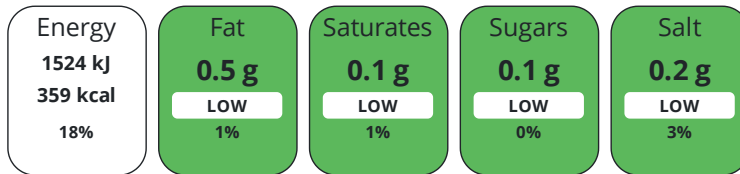
Product Contains:

Artificial Antioxidants	No	Artificial Flavourings	Yes
Artificial Colours	No	Artificial Preservatives	No
Artificial Flavour Enhancers	No	Artificial Sweeteners	No
Suitable for Coeliacs	No	Halal Diet	No
Kosher Diet	No	Vegetarian Diet	Suitable for
Vegan Diet	No		

DIET
SUITABILITY

NUTRITIONAL
INFORMATION

Each 100g/ml portion contains:



of your reference intake.

Typical values per 100g/ml : Energy 359kcal / 1524kJ

Nutrient	per 100g/ml	RI per 100g/ml
Energy (kJ)	1524 kJ	18%
Energy (kcal)	359 kcal	18%
Fat	0.5 g	1%
of which Saturates	< 0.1 g	1%
Carbohydrate	88 g	34%
of which Sugars	0.1 g	0%
Fibre	< 0.5 g	
Protein	0.3 g	1%
Salt	0.2 g	3%
Sodium	79 mg	

SUPPLEMENTARY
NUTRITIONAL
INFORMATION

HFSS (HIGH IN
FAT, SALT AND
SUGAR)

HFSS Status	No
--------------------	----

HANDLING &
STORAGE
INFORMATION

Directions For Use

Yield Guide: Custard Powder 50g / Whole bag (3kg) Granulated Sugar 50g / 3kg Cold Milk 110ml / 6.6ltrs Hot Milk 700ml/ 42ltrs No. of 50ml portions 18 / 1092
 Cooking Instructions: On the hob: 1. Put the custard powder and the sugar into a saucepan, add cold milk, then mix into a smooth paste. 2. Carefully pour hot milk (nearly boiling) onto the custard mix, stirring well. 3. Return to the saucepan and bring to the boil over a gentle heat, stirring continuously until thickened. In the microwave (750 watt)**: 1. Follow steps 1 and 2 above. 2. Add the remaining milk and cook on full power for 6 minutes, stirring half way through cooking period. 3. Leave to stand for 1 minute before serving. ** This is not suitable for large quantities of mix.

Storage Instructions

Store in a cool dry place away from strong odours. Reseal the bag and use within 30 days of opening.

Shelf Life from Time of Production	270 Days
---	----------



ORIGIN

Product Country of Origin/Place of United Kingdom

Provenance

Additional Origin Details

Packed for Caterforce Ltd, Cheshire SK10 1LT and Caterforce Ltd, Suite 105, 3 Lombard Street East, Dublin 2, Ireland

PRODUCT
CHARACTERISTICS

Standards Testing

Do you undertake trend analysis of Yes **Is shelf life testing undertaken?** Yes

microbiological results?

Microbiological Standards

Organism	Description	Frequency	Target	Maximum	Sample (g or ml)
Bacillus Cereus (cfu/g or ml)		Occasionally	<100	100000	25
Clostridium Perfringens (cfu/g or ml)		Occasionally	<100	10000	25
E. Coli (cfu/g or ml)		Occasionally	<0	0	25
Enterobacteriaceae (cfu/g or ml)		Occasionally	<100	10000	25
Staphylococcus Aureus (cfu/g or ml)		Occasionally	<100	1000	25
Salmonella (cfu/g or ml)		Occasionally	<0	0	25
Yeast (cfu/g or ml)		Occasionally	<100	1000	25
Moulds (cfu/g or ml)		Occasionally	<100	100000	25

Physical Standards

Test	Description	Frequency	Target	Range	Sample (g or ml)
Weight (g)		Every Batch	<3000	2955 to 3045	3000

CONFIGURATION

Case Configuration

Inner Pack Configuration

Total Quantity of Inner Components in 4 Units

Outer Case

Is the Outer Case Splittable? Yes

PRODUCT
WEIGHTS

Inner Component

Variable Weight Consumer Item No

Inner Component Weight 3 kg

Weight/Volume

4 x 3kg *Dimensions flat bag not packed*

Outer Case

Outer Case Gross Weight 12.42 kg

Outer Case Net Weight 12 kg

PRODUCT DIMENSIONS

Inner Component	
Inner Component Depth	100 mm
Inner Component Width	152 mm
Inner Component Height	400 mm
Outer Case	
Outer Case Depth	350 mm
Outer Case Width	230 mm
Outer Case Height	250 mm

PALLET INFORMATION

Quantity of Cases Per Pallet Layer	14 Cases	Pallet Height	1.2 MTR
Quantity of Layers Per Pallet	5 Layers	Pallet Gross Weight	900.5 kg
Quantity of Cases Per Pallet	70 Cases		

PACKAGING

Inner Component Packaging						
Type	Materials	Weight	Recycled Plastic %	Recyclable	Returnable	Composite
Paper/Polyethylene	Plastic	6.3 g	0.00 %			
Paper/Polyethylene	Paper/Cardboard	37.7 g	- %			

Outer Case Packaging						
Type	Materials	Weight	Recycled Plastic %	Recyclable	Returnable	Composite
Case	Paper/Cardboard	240 g	- %			

Transport Packaging						
Type	Materials	Weight	Recycled Plastic %	Recyclable	Returnable	Composite
Other	Plastic	250 g	0.00 %		Yes	
Other	Paper/Cardboard	200 g	- %		Yes	
Other	Wood	20000 g	- %		Yes	

OTHER INFORMATION

Commodity Code	1901909100
-----------------------	------------

CONTACT INFORMATION

ADDRESS
Caterforce United Kingdom
P: (Phone) 01625 440188

The information on the [Erudus System](#) has been supplied by the manufacturers of the products and, whilst the owners of the Erudus System take steps to ensure the information is regularly updated, they give no warranty and no guarantee that the information is accurate. Product information and ingredients may change, please always read product labels carefully in addition to using the information provided by Erudus.

We do not accept liability for any inaccuracies or incorrect information contained on this site. Please visit <http://www.erudus.com/terms-and-conditions> for full terms and conditions.