

170725

Corned Beef 6x2720g

SHIP CORNED BEEF 6x2.72Kg

PRODUCT DESCRIPTION

Ship Corned Beef consists of cooked cured beef, lightly marbled with beef fat, packed in hermetically sealed containers and preserved by the application of a thermal sterilisation process.

Brand	Princes Limited
Manufacturer Product Code	306269
Product Type	Food
Product Category	Meat and Meat Products
Storage Type	Ambient
Erudus ID	10ff8c50e85a42f2b59d6eab442b7daa
Specification Type	Legacy



Inner Component GTIN	5000232153609
Outer Case GTIN	05010259623634

INGREDIENTS

Ingredient Declaration

Cooked Beef (95%), Beef (3%), Salt, Preservative : Sodium Nitrite.

ALLERGENS

Product Contains:

Celery/Celeriac	No	Mustard	No
Cereals Containing Gluten	No	Nuts (Tree)	No
Barley	No	Almond nuts	No
Oats	No	Brazil nuts	No
Rye	No	Cashew nuts	No
Wheat (including Spelt and Khorasan)	No	Hazelnuts	No
Gluten content <20ppm	Yes	Macadamia (Queensland) nuts	No
Crustacea	No	Pecan nuts	No
Eggs	No	Pistachio nuts	No
Fish	No	Walnuts	No
Lupin	No	Peanuts	No
Milk	No	Sesame Seeds	No
Molluscs	No	Soybeans	No
		Sulphur Dioxide and Sulphites	No

SUPPLEMENTARY INGREDIENT INFORMATION

Palm Oil	No
Hydrogenated Vegetable Oil/Fat	No
GM Protein/DNA	No

ADDITIVES

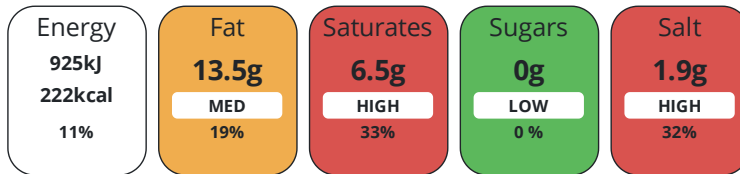
Product Contains:

Artificial Antioxidants	No	Artificial Flavourings	No
Artificial Colours	No	Artificial Preservatives	Yes
Artificial Flavour Enhancers	No	Artificial Sweeteners	No
Suitable for Coeliacs	Yes	Halal Diet	No
Kosher Diet	No	Vegetarian Diet	No
Vegan Diet	No		

DIET SUITABILITY

NUTRITIONAL INFORMATION

Each 100g/ml portion contains:



of your reference intake.

Typical values per 100g/ml : Energy 222kcal / 925kj

Nutrient	per 100g/ml	RI per 100g/ml
Energy (kj)	925 kj	11%
Energy (kcal)	222 kcal	11%
Fat	13.5 g	19%
of which Saturates	6.5 g	33%
Carbohydrate	0 g	0%
of which Sugars	0 g	0%
Protein	25 g	50%
Salt	1.9 g	32%
Sodium	760 mg	

SUPPLEMENTARY NUTRITIONAL INFORMATION

HANDLING & STORAGE INFORMATION

Directions For Use

NA

Storage Instructions

The product may be stored at ambient temperature and is ready for consumption direct from the can. If not used immediately after opening, the product should be placed in a non-metal container and then stored in a refrigerator for up to three days.

Shelf Life from Time of Production 1825 Days

ACCREDITATIONS/ CERTIFICATIONS/ ASSURANCE SCHEMES



ORIGIN

Product Country of Origin/Place of Brazil

Provenance

Additional Origin Details

NA

PRODUCT CHARACTERISTICS

Standards Testing

	Do you undertake trend analysis of microbiological results?	No	Is shelf life testing undertaken?	No			
CONFIGURATION	Case Configuration		Inner Pack Configuration				
	Total Quantity of Inner Components in Outer Case	6 Units					
	Is the Outer Case Splittable?	No					
PRODUCT WEIGHTS	Inner Component						
	Variable Weight Consumer Item	No					
	Inner Component Weight	2720 g					
	Weight/Volume						
	2720g						
	Outer Case						
	Outer Case Gross Weight	19.12 kg					
Outer Case Net Weight	16.32 kg						
PRODUCT DIMENSIONS	Inner Component						
	Inner Component Depth	224 mm					
	Inner Component Width	98 mm					
	Inner Component Height	135 mm					
	Outer Case						
	Outer Case Depth	435 mm					
	Outer Case Width	235 mm					
Outer Case Height	220 mm						
PALLET INFORMATION	Quantity of Cases Per Pallet Layer	10 Cases	Pallet Height	1.4 MTR			
	Quantity of Layers Per Pallet	6 Layers					
	Quantity of Cases Per Pallet	60 Cases					
PACKAGING	Inner Component Packaging						
	Type	Materials	Weight	Recycled Plastic %	Recyclable	Returnable	Composite
	Can	Paper/Cardboard	66 g	- %			
	Can	Steel	1860 g	- %			
	Outer Case Packaging						
	Type	Materials	Weight	Recycled Plastic %	Recyclable	Returnable	Composite
	Case	Paper/Cardboard	385 g	- %			
	Transport Packaging						
	Type	Materials	Weight	Recycled Plastic %	Recyclable	Returnable	Composite
	Other	Plastic	2.5 g	- %			
	OTHER INFORMATION CONTACT INFORMATION	Address	Technical Contact				
		Princes Limited	Christine Collins				
		Royal Liver Building	Specification Technologist				
		Pier Head	christine.collins@princes.co.uk				
		Liverpool	P: (Phone) 01406368380				
L3 1NX							
England							
	P: (Phone) 0151 966 7000						

The information on the [Erudus System](#) has been supplied by the manufacturers of the products and, whilst the owners of the Erudus System take steps to ensure the information is regularly updated, they give no warranty and no guarantee that the information is accurate. Product information and ingredients may change, please always read product labels carefully in addition to using the information provided by Erudus.

We do not accept liability for any inaccuracies or incorrect information contained on this site.
Please visit <http://www.erudus.com/terms-and-conditions> for full terms and conditions.