

Changed Feb 08, 2024 16:22

Reviewed Feb 08, 2024 16:22

Erudus ID b9b759e9133b4bbb9ad278087d00b85f

Version 1.1

Del Monte Pineapple slices in juice (6 x 3kg)

Pineapple Slices In Juice 6x3kg

PRODUCT DESCRIPTION

Del Monte Fancy quality grade canned pineapple slices in pineapple juice.

Brand	R.H.Amar & Co Limited
Manufacturer Product Code	DM072
Product Type	Food
Product Category	Fruit - Canned
Storage Type	Ambient
Erudus ID	b9b759e9133b4bbb9ad278087d00b85f
Specification Type	Fruit and Vegetables
Inner Component GTIN	0024000118268
Outer Case GTIN	10024000118265



INGREDIENTS

Ingredient Declaration

Pineapple Slices, Pineapple Juice

ALLERGENS

Product Contains:

Celery/Celeriac	No	Mustard	No
Cereals Containing Gluten	No	Nuts (Tree)	No
Barley	No	Almond nuts	No
Oats	No	Brazil nuts	No
Rye	No	Cashew nuts	No
Wheat (including Spelt and Khorasan)	No	Hazelnuts	No
Crustacea	No	Macadamia (Queensland) nuts	No
Eggs	No	Pecan nuts	No
Fish	No	Pistachio nuts	No
Lupin	No	Walnuts	No
Milk	No	Peanuts	No
Molluscs	No	Sesame Seeds	No
		Soybeans	No
		Sulphur Dioxide and Sulphites	No

SUPPLEMENTARY INGREDIENT INFORMATION

Palm Oil	No
Hydrogenated Vegetable Oil/Fat	No
GM Protein/DNA	No

ADDITIVES

Product Contains:

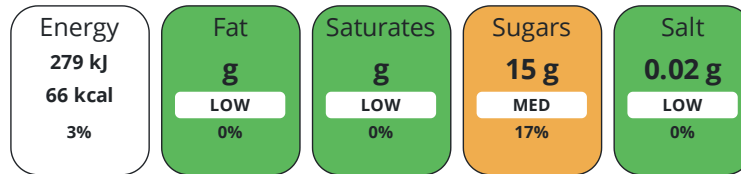
Artificial Antioxidants	No	Artificial Flavourings	No
Artificial Colours	No	Artificial Preservatives	No
Artificial Flavour Enhancers	No	Artificial Sweeteners	No

DIET
SUITABILITY

Vegan Diet	Suitable for	Vegetarian Diet	Suitable for
Halal Diet	Suitable for	Kosher Diet	Certified

NUTRITIONAL
INFORMATION

Each 100g/ml portion contains:



of your reference intake.

Typical values per 100g/ml : Energy 66kcal / 279kJ

Nutrient	per 100g	RI per 100g
Energy (kJ)	279 kJ	3%
Energy (kcal)	66 kcal	3%
Fat	0 g	0%
of which Saturates	0 g	0%
Carbohydrate	15 g	6%
of which Sugars	15 g	17%
Fibre	0.3 g	
Protein	0.4 g	1%
Salt	0.02 g	0%

SUPPLEMENTARY
NUTRITIONAL
INFORMATION

HANDLING &
STORAGE
INFORMATION

Directions For Use

Ready to eat.

Storage Instructions

Store in a cool, dry place. Once opened, transfer to a non-metallic container and consume within 3-4 days.

Shelf Life from Time of Production	365 Days	Exempt From Shelf Life Labelling	No
---	----------	---	----

ACCREDITATIONS/
CERTIFICATIONS/
ASSURANCE
SCHEMES



ORIGIN

Product Country of Origin/Place of Kenya

Provenance

Standards Testing

PRODUCT
CHARACTERISTICS

Do you undertake trend analysis of microbiological results?	No	Is shelf life testing undertaken?	No
--	----	--	----

Analytical Standards

Test	Description	Frequency	Target	Range	Sample (g or ml)
Acidity (%)	Natural acid (measured as anhydrous citric acid) not exceeding 1.25 g/100ml	Every Batch	<1.25	0 to 1.25	100
pH	Natural, Non regulated)	Every Batch	=3.55	3.1 to 4	100

CONFIGURATION	Case Configuration		Inner Pack Configuration				
	Total Quantity of Inner Components in Outer Case	6 Units					
	Is the Outer Case Splittable?	Yes					
PRODUCT WEIGHTS	Inner Component						
	Variable Weight Consumer Item	No					
	Inner Component Weight	3 kg					
	Net Drained Weight	1.743 kg					
	Outer Case						
	Outer Case Gross Weight	20.9 kg					
	Outer Case Net Weight	18 kg					
PRODUCT DIMENSIONS	Inner Component						
	Inner Component Depth	153 mm					
	Inner Component Width	153 mm					
	Inner Component Height	178 mm					
	Outer Case						
	Outer Case Depth	467 mm					
	Outer Case Width	308 mm					
	Outer Case Height	178 mm					
PALLET INFORMATION	Quantity of Cases Per Pallet Layer	7 Cases	Pallet Height	1.42 MTR			
	Quantity of Layers Per Pallet	8 Layers	Pallet Gross Weight	1170 kg			
	Quantity of Cases Per Pallet	56 Cases					
PACKAGING	Inner Component Packaging						
	Type	Materials	Weight	Recycled Plastic %	Recyclable	Returnable	Composite
	Can	Paper/Cardboard	2 g	- %			
	Can	Steel	284 g	- %			
	Outer Case Packaging						
	Type	Materials	Weight	Recycled Plastic %	Recyclable	Returnable	Composite
	Paper/Polyethylene	Plastic	15 g	- %			
	Paper/Polyethylene	Paper/Cardboard	44 g	- %			
	OTHER INFORMATION	Intrastat/Taric Code	2008209000				
		Commodity Code	2008209000				
CONTACT INFORMATION	Address						
	R.H.Amar & Co Limited						
	Turnpike Way						
	High Wycombe						
	Bucks						
	HP12 3TF England						
	P: (Phone) +44 (0) 1494 530 200						

The information on the [Erudus System](#) has been supplied by the manufacturers of the products and, whilst the owners of the Erudus System take steps to ensure the information is regularly updated, they give no warranty and no guarantee that the information is accurate. Product information and ingredients may change, please always read product labels carefully in addition to using the information provided by Erudus.

We do not accept liability for any inaccuracies or incorrect information contained on this site.
Please visit <http://www.erudus.com/terms-and-conditions> for full terms and conditions.