

# Bebo Light Sunflower Spread 4 x 100 x 10g

Light Sunflower Spread 400x

## PRODUCT DESCRIPTION

Vegetable Spread 35% Fat

<b>Brand</b>	Smilde Food Group Ltd (UK)
<b>Manufacturer Product Code</b>	111885
<b>Product Type</b>	Food
<b>Product Category</b>	Fats and Yellow Fats
<b>Storage Type</b>	Chilled
<b>Erudus ID</b>	6abcb3b88e5045f294ad010a0a36685a
<b>Specification Type</b>	Legacy

**Inner Component GTIN** 8710472011269



## INGREDIENTS

### Ingredient Declaration

Water, vegetable oils (sunflower, palm), salt, emulsifiers: mono and diglycerides of fatty acids, polyglycerol polyricinoleate. flavouring, acid: citric acid. colour: beta carotene. vitamins: A, D.

## ALLERGENS

Product Contains:

<b>Celery/Celeriac</b>	No	<b>Mustard</b>	No
<b>Cereals Containing Gluten</b>	No	<b>Nuts (Tree)</b>	No
<b>Barley</b>	No	<b>Almond nuts</b>	No
<b>Oats</b>	No	<b>Brazil nuts</b>	No
<b>Rye</b>	No	<b>Cashew nuts</b>	No
<b>Wheat (including Spelt and Khorasan)</b>	No	<b>Hazelnuts</b>	No
<b>Gluten content &lt;20ppm</b>	Yes	<b>Macadamia (Queensland) nuts</b>	No
<b>Crustacea</b>	No	<b>Pecan nuts</b>	No
<b>Eggs</b>	No	<b>Pistachio nuts</b>	No
<b>Fish</b>	No	<b>Walnuts</b>	No
<b>Lupin</b>	No	<b>Peanuts</b>	No
<b>Milk</b>	No	<b>Sesame Seeds</b>	No
<b>Molluscs</b>	No	<b>Soybeans</b>	No
		<b>Sulphur Dioxide and Sulphites</b>	No

## SUPPLEMENTARY INGREDIENT INFORMATION

<b>Palm Oil</b>	Yes
<b>Hydrogenated Vegetable Oil/Fat</b>	No
<b>GM Protein/DNA</b>	No

## ADDITIVES

Product Contains:

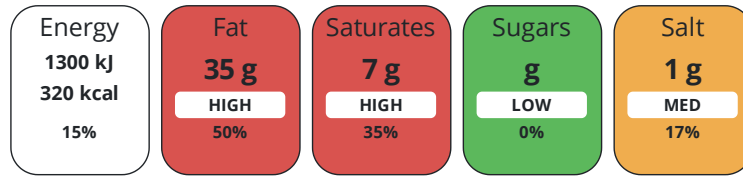
<b>Artificial Antioxidants</b>	No	<b>Artificial Flavourings</b>	No
<b>Artificial Colours</b>	No	<b>Artificial Preservatives</b>	No
<b>Artificial Flavour Enhancers</b>	No	<b>Artificial Sweeteners</b>	No

DIET  
SUITABILITY

<b>Suitable for Coeliacs</b>	Yes	<b>Halal Diet</b>	Suitable for
<b>Kosher Diet</b>	Suitable for	<b>Vegetarian Diet</b>	Suitable for
<b>Vegan Diet</b>	Suitable for		

NUTRITIONAL  
INFORMATION

Each 100g/ml portion contains:



of your reference intake.

Typical values per 100g/ml : Energy 320kcal / 1300kJ

Nutrient	per 100g/ml	RI per 100g/ml
<b>Energy (kJ)</b>	1300 kJ	15%
<b>Energy (kcal)</b>	320 kcal	16%
<b>Fat</b>	35 g	50%
of which Saturates	7 g	35%
of which Mono-unsaturates	10 g	
of which Polyunsaturates	18 g	
<b>Carbohydrate</b>	0 g	0%
of which Sugars	0 g	0%
<b>Fibre</b>	0 g	
<b>Protein</b>	0 g	0%
<b>Salt</b>	1 g	17%
<b>Sodium</b>	400 mg	

SUPPLEMENTARY  
NUTRITIONAL  
INFORMATION

HANDLING &  
STORAGE  
INFORMATION

**Directions For Use**

Spread as required

**Storage Instructions**

Keep refrigerated

**Shelf Life from Time of Production** 195 Days

ACCREDITATIONS/  
CERTIFICATIONS/  
ASSURANCE  
SCHEMES  
ORIGIN

**Other Accreditation**

Roundtable of Sustainable Palm Oil (RSPO)

**IFS Food Standard**

**Product Country of Origin/Place of** Netherlands (the)

**Provenance**

PRODUCT  
CHARACTERISTICS

Standards Testing

**Do you undertake trend analysis of microbiological results?** Yes

**Is shelf life testing undertaken?** Yes

CONFIGURATION

Case Configuration

Inner Pack Configuration

**Total Quantity of Inner Components in Outer Case** 400 Units

**Is the Outer Case Splittable?** No

PRODUCT WEIGHTS

Inner Component	
<b>Variable Weight Consumer Item</b>	No
<b>Weight/Volume</b>	
100g	
Outer Case	
<b>Outer Case Gross Weight</b>	4.77 kg
<b>Outer Case Net Weight</b>	4 kg

PRODUCT DIMENSIONS

Inner Component	
<b>Inner Component Depth</b>	202 mm
<b>Inner Component Width</b>	166 mm
<b>Inner Component Height</b>	86 mm
Outer Case	
<b>Outer Case Depth</b>	341 mm
<b>Outer Case Width</b>	209 mm
<b>Outer Case Height</b>	187 mm

PALLET INFORMATION

<b>Quantity of Cases Per Pallet Layer</b>	10 Cases	<b>Pallet Height</b>	1.8 MTR
<b>Quantity of Layers Per Pallet</b>	9 Layers	<b>Pallet Gross Weight</b>	472 kg
<b>Quantity of Cases Per Pallet</b>	90 Cases		

PACKAGING

Inner Component Packaging						
Type	Materials	Weight	Recycled Plastic %	Recyclable	Returnable	Composite
Box	Plastic	0.12 g	- %			
Box	Paper/Cardboard	0.15 g	- %			
Outer Case Packaging						
Type	Materials	Weight	Recycled Plastic %	Recyclable	Returnable	Composite
Case	Plastic	353 g	- %			
Case	Paper/Cardboard	412 g	- %			

OTHER INFORMATION CONTACT INFORMATION

Address  
 Smilde Food Group Ltd (UK)  
 The Mallings  
 112 Malling Street  
 Lewes  
 BN7 2RG  
 England

P. (Phone) 07450 200063

The information on the [Erudus System](#) has been supplied by the manufacturers of the products and, whilst the owners of the Erudus System take steps to ensure the information is regularly updated, they give no warranty and no guarantee that the information is accurate. Product information and ingredients may change, please always read product labels carefully in addition to using the information provided by Erudus.

We do not accept liability for any inaccuracies or incorrect information contained on this site.  
 Please visit <http://www.erudus.com/terms-and-conditions> for full terms and conditions.