

568412

Smooth Porridge Oats 6x

Ready brek Smooth Porridge Oats Box 6 x 450g

PRODUCT DESCRIPTION

Original oat cereal fortified with vitamins, iron and calcium. 6 x 450g packets in a case

Brand	Weetabix Ltd
Manufacturer Product Code	08416
Product Type	Food
Product Category	Cereals and Grains
Storage Type	Ambient
Erudus ID	84ddd0baba9f4759b86835dd77c0c747
Specification Type	Legacy
Inner Component GTIN	5010029219494
Outer Case GTIN	05010029219517



INGREDIENTS

Ingredient Declaration

Wholegrain Rolled **OATS** (60%), Wholegrain **OAT** Flour (38%), Calcium, Niacin, Iron, Riboflavin (B2), Vitamin B6, Thiamin (B1), Folic Acid, Vitamin D, Vitamin B12.

ALLERGENS

Product Contains:

Celery/Celeriac	No	Mustard	No
Cereals Containing Gluten	Yes	Nuts (Tree)	No
Barley	May Contain	Almond nuts	No
Oats	Yes	Brazil nuts	No
Rye	May Contain	Cashew nuts	No
Wheat (including Spelt and Khorasan)	May Contain	Hazelnuts	No
Gluten content <20ppm	No	Macadamia (Queensland) nuts	No
Crustacea	No	Pecan nuts	No
Eggs	No	Pistachio nuts	No
Fish	No	Walnuts	No
Lupin	No	Peanuts	No
Milk	May Contain	Sesame Seeds	No
Molluscs	No	Soybeans	No
		Sulphur Dioxide and Sulphites	No

Risk Source:

Additional Allergen Information

Allergy Advice. For allergens see ingredients in bold. Also may contain milk, wheat, barley and rye.

SUPPLEMENTARY INGREDIENT INFORMATION

Palm Oil	No
Hydrogenated Vegetable Oil/Fat	No
GM Protein/DNA	No

ADDITIVES

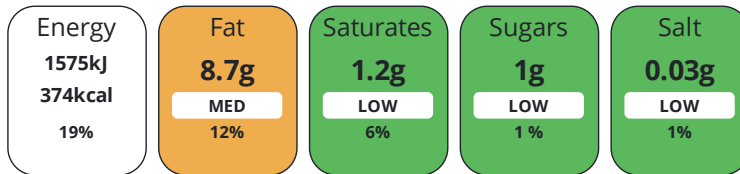
Product Contains:

Artificial Antioxidants	No	Artificial Flavourings	No
Artificial Colours	No	Artificial Preservatives	No
Artificial Flavour Enhancers	No	Artificial Sweeteners	No
Suitable for Coeliacs	No	Halal Diet	No
Kosher Diet	Suitable for	Vegetarian Diet	Suitable for
Vegan Diet	No		

DIET SUITABILITY

NUTRITIONAL INFORMATION

Each 100g/ml portion contains:



of your reference intake.

Typical values per 100g/ml : Energy 374kcal / 1575kj

Nutrient	per 100g/ml	RI per 100g/ml	per 30g/ml serving	RI per 30g/ml serving
Energy (kJ)	1575 kJ	19%	472.5 kJ	6%
Energy (kcal)	374 kcal	19%	112.2 kcal	6%
Fat	8.7 g	12%	2.6 g	4%
of which Saturates	1.2 g	6%	0.4 g	2%
Carbohydrate	58 g	22%	17.4 g	7%
of which Sugars	1 g	1%	0.3 g	0%
Fibre	7.9 g		2.4 g	
Protein	12 g	24%	3.6 g	7%
Salt	0.03 g	1%	-	
Sodium	10 mg		3 mg	

Serving Size 30 g

VITAMINS AND MINERALS

Nutrient	per 100g/ml	RI per 100g/ml	per 30g/ml serving	RI per 30g/ml serving
Folate/Folic Acid	170 µg	85%	51 µg	26%
Calcium	1340 mg	168%	402 mg	50%
Iron	12 mg	86%	3.6 mg	26%

SUPPLEMENTARY NUTRITIONAL INFORMATION

Cholesterol per 100 g/ml (UK/FR) 0 g

HANDLING &
STORAGE
INFORMATION

Directions For Use

Measure 5 heaped dessert spoon (30g) of Ready brek into a microwaveable bowl. Mix it with 150ml of milk and stir. Microwave for 1 1/2 minutes, stirring halfway through.* stand for 1 minute before serving. *Based on 750W Category D and 1000W Category E microwaves. or just add hot milk. Simply boil 150ml of milk and add to your bowl of Ready brek, stir and serve. Please be careful with hot product or liquid. Once prepared, do not store or reheat.

Storage Instructions

Store in a cool, dry and odour free place.

Shelf Life from Time of Production 365 Days

ACCREDITATIONS/
CERTIFICATIONS/
ASSURANCE
SCHEMES



Other Accreditation

N/A

ORIGIN

Product Country of Origin/Place of United Kingdom

Provenance

Additional Origin Details

N/A

PRODUCT
CHARACTERISTICS

Standards Testing

Do you undertake trend analysis of microbiological results? Yes

Is shelf life testing undertaken? Yes

CONFIGURATION

Case Configuration

Inner Pack Configuration

Total Quantity of Inner Components in Outer Case 6 Units

Is the Outer Case Splittable? Yes

PRODUCT
WEIGHTS

Inner Component

Variable Weight Consumer Item No

Weight/Volume

N/A

Outer Case

Outer Case Gross Weight 3.12 kg

Outer Case Net Weight 2.7 kg

PRODUCT
DIMENSIONS

Inner Component

Inner Component Depth 155 mm

Inner Component Width 225 mm

Inner Component Height 60 mm

Outer Case

Outer Case Depth 380 mm

Outer Case Width 163 mm

Outer Case Height 233 mm

PALLET
INFORMATION

Quantity of Cases Per Pallet Layer 17 Cases

Pallet Height 1.33 MTR

Quantity of Layers Per Pallet 5 Layers

Pallet Gross Weight 295.1 kg

Quantity of Cases Per Pallet 85 Cases

PACKAGING

Inner Component Packaging

Type	Materials	Weight	Recycled Plastic %	Recyclable	Returnable	Composite
Box	Plastic	4.41 g	- %			
Box	Paper/Cardboard	46.14 g	- %			

Outer Case Packaging

Type	Materials	Weight	Recycled Plastic %	Recyclable	Returnable	Composite
Case	Paper/Cardboard	125 g	- %			

OTHER INFORMATION

Manufacturer Comments

Original oat cereal fortified with vitamins, iron and calcium. 6 x 450g packets in a case

CONTACT INFORMATION

Address

Weetabix Ltd
Station Road
Burton Latimer
NN15 5JR
England

P: (Phone) 01536 722181

The information on the [Erudus System](#) has been supplied by the manufacturers of the products and, whilst the owners of the Erudus System take steps to ensure the information is regularly updated, they give no warranty and no guarantee that the information is accurate. Product information and ingredients may change, please always read product labels carefully in addition to using the information provided by Erudus.

We do not accept liability for any inaccuracies or incorrect information contained on this site.
Please visit <http://www.erudus.com/terms-and-conditions> for full terms and conditions.