

132042

# Weetabix Cereal 96x

Weetabix Cereal Single Portion 96 x 1 Pack C

## PRODUCT DESCRIPTION

Whole wheat cereal with added vitamins and iron. 96 one biscuit portions

Brand	Weetabix Ltd
Manufacturer Product Code	07574
Product Type	Food
Product Category	Cereals and Grains
Storage Type	Ambient
Erudus ID	7e93735467724e74b5c43a40970251c2
Specification Type	Legacy



Outer Case GTIN 5010029212440



## INGREDIENTS

### Ingredient Declaration

**WHEAT** (95%), Malted **BARLEY** Extract, Sugar, Salt, Niacin, Iron, Riboflavin (B2), Thiamin (B1), Folic Acid.

## ALLERGENS

Product Contains:

<b>Celery/Celериac</b>	No	<b>Mustard</b>	No
<b>Cereals Containing Gluten</b>	Yes	<b>Nuts (Tree)</b>	No
<b>Barley</b>	Yes	<b>Almond nuts</b>	No
<b>Oats</b>	No	<b>Brazil nuts</b>	No
<b>Rye</b>	No	<b>Cashew nuts</b>	No
<b>Wheat (including Spelt and Khorasan)</b>	Yes	<b>Hazelnuts</b>	No
<b>Gluten content &lt;20ppm</b>	No	<b>Macadamia (Queensland) nuts</b>	No
<b>Crustacea</b>	No	<b>Pecan nuts</b>	No
<b>Eggs</b>	No	<b>Pistachio nuts</b>	No
<b>Fish</b>	No	<b>Walnuts</b>	No
<b>Lupin</b>	No	<b>Peanuts</b>	No
<b>Milk</b>	No	<b>Sesame Seeds</b>	No
<b>Molluscs</b>	No	<b>Soybeans</b>	No
		<b>Sulphur Dioxide and Sulphites</b>	No

### Additional Allergen Information

Allergy Advice. For allergens, including cereals containing gluten, see ingredients in bold.

## SUPPLEMENTARY INGREDIENT INFORMATION

<b>Palm Oil</b>	No
<b>Hydrogenated Vegetable Oil/Fat</b>	No
<b>GM Protein/DNA</b>	No

ADDITIVES

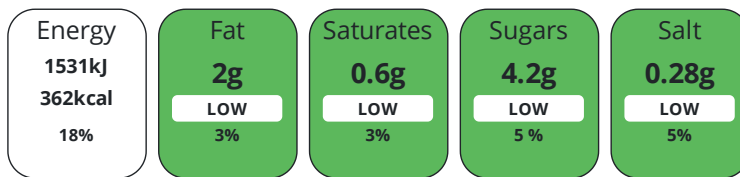
Product Contains:

<b>Artificial Antioxidants</b>	No	<b>Artificial Flavourings</b>	No
<b>Artificial Colours</b>	No	<b>Artificial Preservatives</b>	No
<b>Artificial Flavour Enhancers</b>	No	<b>Artificial Sweeteners</b>	No
<b>Suitable for Coeliacs</b>	No	<b>Halal Diet</b>	No
<b>Kosher Diet</b>	Suitable for	<b>Vegetarian Diet</b>	Suitable for
<b>Vegan Diet</b>	Suitable for		

DIET SUITABILITY

NUTRITIONAL INFORMATION

Each 100g/ml portion contains:



of your reference intake.

Typical values per 100g/ml : Energy 362kcal / 1531kj

Nutrient	per 100g/ml	RI per 100g/ml	per 18.75g/ml serving	RI per 18.75g/ml serving
<b>Energy (kJ)</b>	1531 kJ	18%	287.1 kJ	3%
<b>Energy (kcal)</b>	362 kcal	18%	67.9 kcal	3%
<b>Fat</b>	2 g	3%	0.4 g	1%
<b>of which Saturates</b>	0.6 g	3%	0.1 g	1%
<b>Carbohydrate</b>	69 g	27%	12.9 g	5%
<b>of which Sugars</b>	4.2 g	5%	0.8 g	1%
<b>Fibre</b>	10 g		1.9 g	
<b>Protein</b>	12 g	24%	2.3 g	5%
<b>Salt</b>	0.28 g	5%	0.1 g	2%
<b>Sodium</b>	110 mg		20.6 mg	

**Serving Size** 18.75 g

VITAMINS AND MINERALS

Nutrient	per 100g/ml	RI per 100g/ml	per 18.75g/ml serving	RI per 18.75g/ml serving
<b>Folate/Folic Acid</b>	170 µg	85%	31.9 µg	16%
<b>Iron</b>	12 mg	86%	2.3 mg	16%

SUPPLEMENTARY NUTRITIONAL INFORMATION

**Cholesterol per 100 g/ml (UK/FR)** 0 g

HANDLING & STORAGE INFORMATION

**Directions For Use**

N/A

**Storage Instructions**

Store in a cool, dry and odour free place.

**Shelf Life from Time of Production** 365 Days

	<b>Other Accreditation</b>						
	N/A						
ORIGIN	<b>Product Country of Origin/Place of Provenance</b>		United Kingdom				
	<b>Additional Origin Details</b>						
	N/A						
PRODUCT CHARACTERISTICS	Standards Testing						
	<b>Do you undertake trend analysis of microbiological results?</b>	Yes	<b>Is shelf life testing undertaken?</b>		Yes		
CONFIGURATION	Case Configuration		Inner Pack Configuration				
	<b>Total Quantity of Inner Components in Outer Case</b>	96 Units					
	<b>Is the Outer Case Splittable?</b>	Yes					
PRODUCT WEIGHTS	Inner Component						
	<b>Variable Weight Consumer Item</b>	No					
	<b>Weight/Volume</b>						
	N/A						
	Outer Case						
	<b>Outer Case Gross Weight</b>	2.02 kg					
	<b>Outer Case Net Weight</b>	1.8 kg					
PRODUCT DIMENSIONS	Inner Component						
	<b>Inner Component Depth</b>	50 mm					
	<b>Inner Component Width</b>	140 mm					
	<b>Inner Component Height</b>	20 mm					
	Outer Case						
	<b>Outer Case Depth</b>	346 mm					
	<b>Outer Case Width</b>	271 mm					
	<b>Outer Case Height</b>	177 mm					
PALLET INFORMATION	<b>Quantity of Cases Per Pallet Layer</b>	11 Cases	<b>Pallet Height</b>		1.05 MTR		
	<b>Quantity of Layers Per Pallet</b>	5 Layers	<b>Pallet Gross Weight</b>		145.2 kg		
	<b>Quantity of Cases Per Pallet</b>	55 Cases					
PACKAGING	Inner Component Packaging						
	<b>Type</b>	<b>Materials</b>	<b>Weight</b>	<b>Recycled Plastic %</b>	<b>Recyclable</b>	<b>Returnable</b>	<b>Composite</b>
	Film	Plastic	0.64 g	- %			
	Outer Case Packaging						
	<b>Type</b>	<b>Materials</b>	<b>Weight</b>	<b>Recycled Plastic %</b>	<b>Recyclable</b>	<b>Returnable</b>	<b>Composite</b>
	Catch Weight	Paper/Cardboard	130 g	- %			
OTHER INFORMATION	<b>Manufacturer Comments</b>						
	Whole wheat cereal with added vitamins and iron. 96 one biscuit portions						

CONTACT  
INFORMATION

Address

Weetabix Ltd  
Station Road  
Burton Latimer  
NN15 5JR  
England

P: (Phone) 01536 722181

The information on the [Erudus System](#) has been supplied by the manufacturers of the products and, whilst the owners of the Erudus System take steps to ensure the information is regularly updated, they give no warranty and no guarantee that the information is accurate. Product information and ingredients may change, please always read product labels carefully in addition to using the information provided by Erudus.

We do not accept liability for any inaccuracies or incorrect information contained on this site.  
Please visit <http://www.erudus.com/terms-and-conditions> for full terms and conditions.