

Roma Penne Wholewheat 500g



(/Products/Zoom/10791740?shottypid=1&gpeRestricted=False)

Product data

EAN
5391506800047

Target market
GB, IE

Components

Ingredients

Durum *Wholewheat* Semolina

Allergen Tag Text

For allergens including Cereals containing Gluten, see ingredients in *bold*.

Allergy Text

May also contain Egg, Mustard & Soya.

Nutrition

	Per 100g (Serving)	Reference Intake (RI)*
Energy	1423kJ	8400kJ
	337kcal	2000kcal
Fat	2.5g	70g
of which saturates	0.4g	20g
Carbohydrate	60.2g	260g
of which sugars	3.4g	90g

	Per 100g (Serving)	Reference Intake (RI)*
Fibre	8.4g	
Protein	14.1g	50g
Salt	0.25g	6g

*Reference intake of an average adult (8400kJ/2000kcal)

Calculated Nutrition

	per 100g
Energy (kJ)	1423
Energy (kcal)	337
Fat (g)	2.5
of which saturates (g)	0.4
Carbohydrate (g)	60.2
of which sugars (g)	3.4
Fibre (g)	8.4
Protein (g)	14.1
Salt (g)	0.25

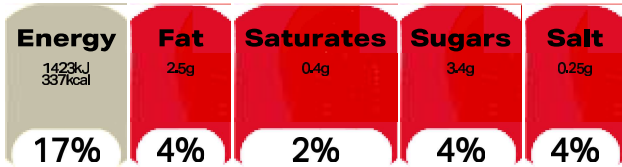
Structured Nutrition EU

	Per 100g (Serving)
Energy	1423 kJ
Energy	337 kcal
Fat	2.5 g
of which saturates	0.4 g
Carbohydrate	60.2 g
of which sugars	3.4 g
Fibre	8.4 g
Protein	14.1 g

Per 100g (Serving)	
Salt	0.25 g

Front of Pack Nutrition

Per 100g/ml
Each 100g serving contains



of the reference intake

Nutrition Other Text

Reference intake of an average adult (8400kJ/2000kcal)

Reference Intake Statement

Reference Intake Statement - Reference intake of an average adult (8400kJ/2000kcal)

Product Description

NielsenIQ Brandbank Captured Product Name

Roma Penne Wholewheat 500g

Brand

Roma

Features

Cooks in 10 Mins
High Fibre
Source of Protein
100% Durum Wholewheat Pasta
No added colours, flavours or preservatives
Suitable for Vegetarians

Standardised Brand

Brand - Roma

Regulated Product Name

Pasta made with durum wholewheat semolina

Marketing

Company Name

Valéo Foods

Company Address

Merrywell Industrial Estate,
Ballymount,
Dublin 12.

Third Party Logos

- Green Dot
- Italy Flag

Brand Marketing

Roma's finest food experts work with an inherent passion to bring a touch of Mediterranean magic to mealtimes! We pride ourselves on creating and sourcing great food for Irish families since 1951. We put the same great love and attention into all our products as you would expect from all lovingly made home cooked food. We travel the length and breadth of the Mediterranean, choosing only the best from local suppliers to bring you authentic and exciting food. Roma products have bags of taste and character that will allow all food lovers to fall in love at first bite! Loved by generations of Irish families

Nutritional Claims

High Fibre
Source of Protein

Health & Lifestyle

Lifestyle

- Suitable for Vegetarians

Allergy Advice

Eggs - May Contain
Mustard - May Contain
Soya - May Contain
Wheat - Contains

Storage & Usage

Cooking Guidelines

Hob - From Ambient

Allow 100g of pasta per person.
Add the pasta to a large saucepan of boiling, salted water. Stir and return to the boil.
Reduce the heat and simmer for 10-11 minutes, stirring occasionally.
Drain well and serve immediately.

Storage Type

Type

Ambient

Preparation and Usage

To open bag, use a scissors.

Storage

Store in a cool, dry place. Store in an airtight container once opened.

Date Marking Type

- Best Before

Recipes

Recipe Suggestion
Roma Wholewheat Penne with Courgette Ribbons, Red Peppers and Pine Nuts
Serves 4
400g Roma Wholewheat Penne
200ml white wine
2 red peppers, cut into fine strips (julienne)
2 shallots, finely sliced
50ml Roma Passata
1/2 tsp sugar
3 tbsp extra virgin olive oil
1 garlic clove, crushed
1 courgette, ribboned using a vegetable peeler
Salt and freshly ground pepper
80g Pine nuts, toasted
120ml cream
5 basil leaves optional

Method

- 1 Toast the pine nut in a dry frying pan ensuring they do not burn.
- 2 Sauté the shallots in a little olive oil for 4-5 minutes until softened. Add the peppers and garlic and sauté for 3-4 minutes. Add the wine, followed by the Tomato Passata and sugar, and simmer for 2-3 minutes. Add the courgette ribbons and cream. Simmer for 1 minute and add salt and pepper to taste.
- 3 Cook the pasta according to the instructions on the pack. Retain some of the cooking liquid as you may require 2 or 3 tbsp for the sauce if you feel that it is too thick.
- 4 Add the pasta to the sauce and plate. Sprinkle over the toasted pine nuts and add shredded basil. Serve immediately.

Brandbank Captured Pack Data

Pack Size

500g €

Numeric Size

Numeric Size - 500

Dimension

Shelf Height (mm)	Shelf Width (mm)	Shelf Depth (mm)
167	111	67

(GS1 package measurement rules (http://www.gs1.org/docs/gsm/gdsn/GDSN_Package_Measurement_Rules.pdf))

Unit (specific)

Unit (specific) - Grams

Country

Country of Origin - Italy

Packed In - Italy

Pack Type

Type - Bag

Weight

Gross Weight - 506

Unit Merchandising

Height - 167

Width - 111

Depth - 67

Origin

Origin Free Text - Produced and packed in Italy

Customer Services

Manufacturers Address

Produced and packed for:
 Valeo Foods,
 Merrywell Industrial Estate,
 Ballymount,
 Dublin 12.

Return To

Valeo Foods,
 Merrywell Industrial Estate,
 Ballymount,
 Dublin 12.
 For more information visit www.valeofoods.ie
 For Customer Care please contact 1800 855 706

Telephone Helpline

1800 855 706

Web Address

www.valeofoods.ie

Extended Data

Description Breakdown

Functional Name - Penne
Variant - Wholewheat