

560154

Instant Mashed Potato 4x

Smash The Original Instant Mashed Potato 2kg

PRODUCT DESCRIPTION

Instant Mashed Potato Makes approximately 60 x 180g portions

Brand	Premier Foods
Manufacturer Product Code	1002105
Product Type	Food
Product Category	Potato Products
Storage Type	Ambient
Erudus ID	8d15f7eb5d4c4026b53dbb98b228ed13
Specification Type	Legacy



Inner Component GTIN 5000354163562



INGREDIENTS

Ingredient Declaration

Dehydrated Potato (83%), Dried Whole **MILK**, Salt, Emulsifier (Mono- and Diglycerides of Fatty Acids), Stabiliser (Diphosphates), Antioxidants (Ascorbic Acid, Sodium Bisulphite (SULPHITES)), Colour (Curcumin), Flavouring.

ALLERGENS

Product Contains:

Celery/Celериac	No	Mustard	No
Cereals Containing Gluten	No	Nuts (Tree)	No
Barley	No	Almond nuts	No
Oats	No	Brazil nuts	No
Rye	No	Cashew nuts	No
Wheat (including Spelt and Khorasan)	No	Hazelnuts	No
Crustacea	No	Macadamia (Queensland) nuts	No
Eggs	No	Pecan nuts	No
Fish	No	Pistachio nuts	No
Lupin	No	Walnuts	No
Milk	Yes	Peanuts	No
Molluscs	No	Sesame Seeds	No
		Soybeans	No
		Sulphur Dioxide and Sulphites	Yes

Additional Allergen Information

For allergens, see ingredients in BOLD.

SUPPLEMENTARY INGREDIENT INFORMATION

Palm Oil	No
Hydrogenated Vegetable Oil/Fat	No
GM Protein/DNA	No

ADDITIVES

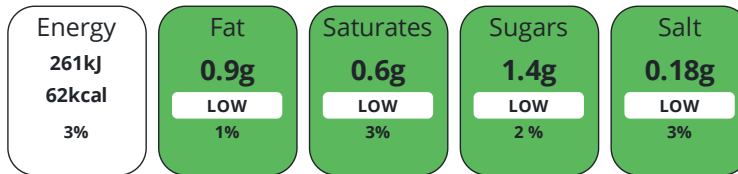
Product Contains:

Artificial Antioxidants	No	Artificial Flavourings	No
Artificial Colours	No	Artificial Preservatives	No
Artificial Flavour Enhancers	No	Artificial Sweeteners	No
Suitable for Coeliacs	Yes	Halal Diet	No
Kosher Diet	No	Vegetarian Diet	Suitable for
Vegan Diet	No		

DIET SUITABILITY

NUTRITIONAL INFORMATION

Each 100g/ml portion contains:



of your reference intake.

Typical values per 100g/ml : Energy 62kcal / 261kj

Nutrient	per 100g/ml	RI per 100g/ml	per 100g/ml serving	RI per 100g/ml serving
Energy (kJ)	261 kJ	3%	261 kJ	3%
Energy (kcal)	62 kcal	3%	62 kcal	3%
Fat	0.9 g	1%	0.9 g	1%
of which Saturates	0.6 g	3%	0.6 g	3%
Carbohydrate	10.8 g	4%	10.8 g	4%
of which Sugars	1.4 g	2%	1.4 g	2%
Fibre	1.2 g		1.2 g	
Protein	2 g	4%	2 g	4%
Salt	0.18 g	3%	0.2 g	3%
Serving Size	100 g			

SUPPLEMENTARY NUTRITIONAL INFORMATION

HANDLING & STORAGE INFORMATION

Directions For Use

Cold Water Weigh required amount of Smash mix into a suitable bowl. Add amount of cold water as shown in table below, mix well and allow to stand for 10 minutes. Re-stir and use as required. Product can be stored covered in fridge (below 5°C) for up to 48 hours. Before consumption, the product must be heated until the temperature at the centre is at least 75°C. Once reheated do not re-chill and re-serve. Hot Water Weigh required amount of Smash mix into a suitable bowl. Add amount of hot water as shown in table below, mix well and allow to stand for 3 minutes. Re-stir and use immediately as required. Smash Mix Water Ready to serve mashed potato 0.1kg 500ml 0.6kg 0.5kg 2.5 litres 3kg 1kg 5 litres 6kg 2kg 10 litres 12kg

Storage Instructions

Once opened, store in a cool dry place and use within 14 days for optimum flavour.

Shelf Life from Time of Production	365 Days
---	----------



Other Accreditation

N/A

ORIGIN

Product Country of Origin/Place of United Kingdom

Provenance

Additional Origin Details

N/A

PRODUCT
CHARACTERISTICS

Standards Testing

Do you undertake trend analysis of microbiological results? Yes

Is shelf life testing undertaken? Yes

CONFIGURATION

Case Configuration

Inner Pack Configuration

Total Quantity of Inner Components in 4 Units

Outer Case

Is the Outer Case Splittable? Yes

PRODUCT
WEIGHTS

Inner Component

Variable Weight Consumer Item No

Weight/Volume

2kg

Outer Case

Outer Case Gross Weight 8.57 kg

Outer Case Net Weight 8 kg

PRODUCT
DIMENSIONS

Inner Component

Inner Component Depth 50 mm

Inner Component Width 260 mm

Inner Component Height 450 mm

Outer Case

Outer Case Depth 491 mm

Outer Case Width 191 mm

Outer Case Height 295 mm

PALLET
INFORMATION

Quantity of Cases Per Pallet Layer 12 Cases

Pallet Height 1.5 MTR

Quantity of Layers Per Pallet 4 Layers

Pallet Gross Weight 418.56 kg

Quantity of Cases Per Pallet 48 Cases

PACKAGING

Inner Component Packaging

Type	Materials	Weight	Recycled Plastic %	Recyclable	Returnable	Composite
Bag	Plastic	19 g	- %			

Outer Case Packaging

Type	Materials	Weight	Recycled Plastic %	Recyclable	Returnable	Composite
Case	Paper/Cardboard	410 g	- %			

Transport Packaging

Type	Materials	Weight	Recycled Plastic %	Recyclable	Returnable	Composite
Other	Plastic	150 g	- %		Yes	
Other	Wood	25000 g	- %		Yes	

OTHER INFORMATION

Manufacturer Comments

Per 100g as prepared GTIN outer case barcode not given as this recipe has been replaced with 1018451. Once this product 1002105 has sold through it will be removed from ERUDUS leaving the new recipe 1018451 only.

CONTACT INFORMATION

Address

Premier Foods
Premier Foods, Premier House
Centrium Business Park, Griffiths Way
St Albans
AL1 2RE
England

Technical Contact

Nicola Ratcliffe
Business Unit Coordinator
nicola.ratcliffe@premierfoods.co.uk

P: (Phone) 01727 815850

The information on the [Erudus System](#) has been supplied by the manufacturers of the products and, whilst the owners of the Erudus System take steps to ensure the information is regularly updated, they give no warranty and no guarantee that the information is accurate. Product information and ingredients may change, please always read product labels carefully in addition to using the information provided by Erudus.

We do not accept liability for any inaccuracies or incorrect information contained on this site.
Please visit <http://www.erudus.com/terms-and-conditions> for full terms and conditions.