

Changed Jan 16, 2024 13:07

Reviewed Jan 16, 2024 13:07

Erudus ID aab6efe686664298a2e45e331a296ab6

Version 2.0



652988

# Alfees Coronation 2.5L

Alfee's Coronation Mayonnaise

## PRODUCT DESCRIPTION

Flavour: Spicy, curry, acidic Colour: Yellow with spice specks Texture: Smooth and creamy Odour: Curry tones

Brand	Rich Sauces
Manufacturer Product Code	ALFCORMAY2.5
Effective Date	Jan 16, 2024
Product Type	Food
Product Category	Condiments
Storage Type	Ambient
Erudus ID	aab6efe686664298a2e45e331a296ab6
Specification Type	Generic

Inner Component GTIN	5060051295591
Inner Pack GTIN	5060051295591
Outer Case GTIN	5060051295591



## INGREDIENTS

### Ingredient Declaration

Water, Rapeseed Oil (40%), Acidity Regulator: Acetic Acid, Sugar, Stabiliser (Modified Starch, **EGG** Yolk Powder, Xanthan Gum, Tara Gum, Sodium Alginate, Salt, Glucose Syrup, Maltodextrin, Anti Caking Agent: Silicon Dioxide & Calcium Phosphate ); Korma Spices (2%) (Turmeric Powder, Ground Cumin Seeds, Cayenne Chilli Powder, Coriander Powder, Ground Pimento, Chilli Powder, Ground Cinnamon, Black Pepper, Salt, Cornflour, Garlic Powder, Herbs: Oregano, Marjoram, Ground Bay Leaves, Colours: Paprika Extract & Turmeric Extract); Salt, Yeast Extract, Curry Flavouring, Chilli Powder, Preservative: Potassium Sorbate, Antioxidant: Calcium Disodium EDTA.

## ALLERGENS

Product Contains:

<b>Celery/Celeriac</b>	No	<b>Mustard</b>	No
<b>Cereals Containing Gluten</b>	No	<b>Nuts (Tree)</b>	No
<b>Barley</b>	No	<b>Almond nuts</b>	No
<b>Oats</b>	No	<b>Brazil nuts</b>	No
<b>Rye</b>	No	<b>Cashew nuts</b>	No
<b>Wheat (including Spelt and Khorasan)</b>	No	<b>Hazelnuts</b>	No
<b>Crustacea</b>	No	<b>Macadamia (Queensland) nuts</b>	No
<b>Eggs</b>	Yes	<b>Pecan nuts</b>	No
<b>Fish</b>	No	<b>Pistachio nuts</b>	No
<b>Lupin</b>	No	<b>Walnuts</b>	No
<b>Milk</b>	No	<b>Peanuts</b>	No
<b>Molluscs</b>	No	<b>Sesame Seeds</b>	No
		<b>Soybeans</b>	No
		<b>Sulphur Dioxide and Sulphites</b>	No

### Additional Allergen Information

Contains Egg

SUPPLEMENTARY  
INGREDIENT  
INFORMATION

<b>Palm Oil</b>	No
<b>Hydrogenated Vegetable Oil/Fat</b>	No
<b>GM Protein/DNA</b>	No

ADDITIVES

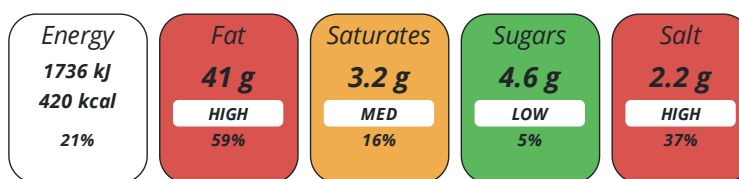
<i>Product Contains:</i>			
<b>Artificial Antioxidants</b>	Yes	<b>Artificial Flavourings</b>	No
<b>Artificial Colours</b>	No	<b>Artificial Preservatives</b>	Yes
<b>Artificial Flavour Enhancers</b>	No	<b>Artificial Sweeteners</b>	No

DIET SUITABILITY

<b>Vegan Diet</b>	No	<b>Vegetarian Diet</b>	Suitable for
<b>Halal Diet</b>	No	<b>Kosher Diet</b>	No

NUTRITIONAL  
INFORMATION

Each 100g/ml portion contains:



of your reference intake.

Typical values per 100g/ml : Energy 420kcal / 1736kj

Nutrient	per 100g	RI per 100g	per 30g serving	RI per 30g serving
<b>Energy (kJ)</b>	1736 kJ	21%	520.8 kJ	6%
<b>Energy (kcal)</b>	420 kcal	21%	126 kcal	6%
<b>Fat</b>	41 g	59%	12.3 g	18%
<b>of which Saturates</b>	3.2 g	16%	1 g	5%
<b>Carbohydrate</b>	7.5 g	3%	2.3 g	1%
<b>of which Sugars</b>	4.6 g	5%	1.4 g	2%
<b>Protein</b>	0.7 g	1%	0.2 g	0%
<b>Salt</b>	2.2 g	37%	0.7 g	12%

**Serving Size** 30 g

**Source of Nutritional Information** Calculation based on known values of ingredients

SUPPLEMENTARY  
NUTRITIONAL  
INFORMATION

HANDLING &  
STORAGE  
INFORMATION

**Directions For Use**

ready to eat

**Storage Instructions**

Ambient product, refrigerate once opened, use within 6 weeks and within best before date.

<b>Shelf Life from Time of Production</b>	300 Days	<b>Exempt From Shelf Life Labelling</b>	No
---	----------	---	----

ACCREDITATIONS/  
CERTIFICATIONS/  
ASSURANCE  
SCHEMES



**Other Accreditation**

ISO 9001 ISO 14001 BRC

ORIGIN	<b>Product Country of Origin/Place of Provenance</b>	United Kingdom					
	<b>Additional Origin Details</b>	UK					
PRODUCT CHARACTERISTICS	<b>Standards Testing</b>						
	<b>Do you undertake trend analysis of microbiological results?</b>	No	<b>Is shelf life testing undertaken?</b>	Yes			
			<b>Commercially Sterile</b>	No			
ORGANOLEPTICS	<b>Appearance</b>	Yellow with spice specks					
	<b>Aroma</b>	Curry tones					
	<b>Taste</b>	A mayonnaise-based sauce with mild korma spices.					
	<b>Texture</b>	Smooth and creamy					
	<b>HAZARD CONTROLS</b>						
	<b>Metal Detection</b>	Yes	<b>Sieving</b>	Yes			
CONFIGURATION	<b>Filters</b>	Yes					
	<b>Case Configuration</b>	Inner Pack Configuration					
	<b>Variable Inner Components in Outer Case</b>	No	<b>Is Inner Pack Splittable?</b>	No			
	<b>Total Quantity of Inner Components in Outer Case</b>	1 Units					
	<b>Is the Outer Case Splittable?</b>	No					
PRODUCT WEIGHTS	<b>Inner Component</b>						
	<b>Variable Weight Consumer Item</b>	Yes					
	<b>e mark</b>	Yes					
	<b>Outer Case</b>						
	<b>Outer Case Gross Weight</b>	2.6 kg					
PRODUCT DIMENSIONS	<b>Outer Case Net Weight</b>	2.45 kg					
	<b>Inner Component</b>						
	<b>Inner Component Depth</b>	200 mm					
	<b>Inner Component Width</b>	200 mm					
	<b>Inner Component Height</b>	138 mm					
	<b>Outer Case</b>						
	<b>Outer Case Depth</b>	200 mm					
PALLET INFORMATION	<b>Outer Case Width</b>	200 mm					
	<b>Outer Case Height</b>	138 mm					
PACKAGING	<b>Non Palletised</b>	Yes					
	<b>Inner Component Packaging</b>						
	<b>Type</b>	<b>Materials</b>	<b>Weight</b>	<b>Recycled Plastic %</b>	<b>Recyclable</b>	<b>Returnable</b>	<b>Composite</b>
	Tub	Plastic	163 g	- %			
OTHER INFORMATION	<b>Manufacturer Comments</b>						
		N/A					

*The information on the [Erudus System](#) has been supplied by the manufacturers of the products and, whilst the owners of the Erudus System take steps to ensure the information is regularly updated, they give no warranty and no guarantee that the information is accurate. Product information and ingredients may change, please always read product labels carefully in addition to using the information provided by Erudus.*

*We do not accept liability for any inaccuracies or incorrect information contained on this site.  
Please visit <http://www.erudus.com/terms-and-conditions> for full terms and conditions.*