

Luxury MSC Cod Fishcakes 24 x 85g

Luxury Msc Cod Fishcakes 24 X 85g

PRODUCT DESCRIPTION

Cod fillets with Potato and seasoning coated in golden Breadcrumbs

Brand	Seafish UK
Manufacturer Product Code	K0177
Product Type	Food
Product Category	Seafood - Fish
Storage Type	Frozen
Erudus ID	61432c7494644d94b5b3db17344bf571
Specification Type	Legacy



INGREDIENTS

Ingredient Declaration
Cod (**FISH**) (45%), Reconstituted Mashed Potato (23%), Fortified Wheat Flour (**WHEAT** Flour, Calcium Carbonate, Iron, Niacin, Thiamin), Rapeseed Oil, Water, Single Cream (Single Cream ,Stabiliser: Carrageenan) (**MILK**), Seasoning (Salt, Dried Sage, Onion Extract), Yeast, Salt, Lemon Juice Concentrate.

ALLERGENS

Product Contains:	
Celery/Celeriac	No
Cereals Containing Gluten	Yes
Barley	No
Oats	No
Rye	No
Wheat (including Spelt and Khorasan)	Yes
Gluten content <20ppm	No
Crustacea	No
Eggs	No
Fish	Yes
Lupin	No
Milk	Yes
Molluscs	No
Mustard	No
Nuts (Tree)	No
Almond nuts	No
Brazil nuts	No
Cashew nuts	No
Hazelnuts	No
Macadamia (Queensland) nuts	No
Pecan nuts	No
Pistachio nuts	No
Walnuts	No
Peanuts	No
Sesame Seeds	No
Soybeans	No
Sulphur Dioxide and Sulphites	No

SUPPLEMENTARY
INGREDIENT
INFORMATION

Palm Oil	No
Hydrogenated Vegetable Oil/Fat	No
GM Protein/DNA	No

ADDITIVES

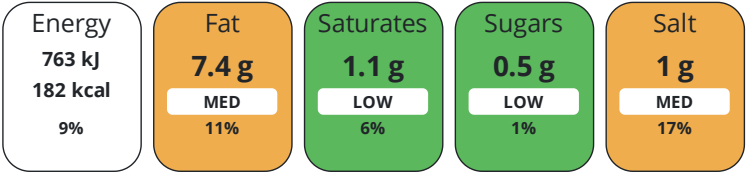
Product Contains:	
Artificial Antioxidants	No
Artificial Colours	No
Artificial Flavour Enhancers	No
Artificial Flavourings	No
Artificial Preservatives	No
Artificial Sweeteners	No

DIET
SUITABILITY

Suitable for Coeliacs	No
Halal Diet	No
Kosher Diet	No
Vegetarian Diet	No
Vegan Diet	No

NUTRITIONAL
INFORMATION

Each 100g/ml portion contains:



of your reference intake.

Typical values per 100g/ml : Energy 182kcal / 763kJ

Nutrient	per 100g/ml	RI per 100g/ml	per 85g/ml serving	RI per 85g/ml serving
Energy (kJ)	763 kJ	9%	648.6 kJ	8%
Energy (kcal)	182 kcal	9%	154.7 kcal	8%
Fat	7.4 g	11%	6.3 g	9%
of which Saturates	1.1 g	6%	0.9 g	5%
Carbohydrate	17 g	7%	14.5 g	6%
of which Sugars	0.5 g	1%	0.4 g	0%
Fibre	1.6 g		1.4 g	
Protein	11 g	22%	9.4 g	19%
Salt	1 g	17%	0.9 g	15%
Sodium	400 mg		340 mg	
Serving Size	85 g			

SUPPLEMENTARY
NUTRITIONAL
INFORMATION

HANDLING &
STORAGE
INFORMATION

Directions For Use	KEEP FROZEN DO NOT RE-FREEZE ONCE THAWED.
Storage Instructions	STORE AT -18 DEG C OR BELOW
Shelf Life from Time of Production	547 Days

ACCREDITATIONS/
CERTIFICATIONS/
ASSURANCE
SCHEMES



Other Accreditation	ASC
Product Country of Origin/Place of Provenance	United Kingdom

ORIGIN

PRODUCT
CHARACTERISTICS

Standards Testing					
Do you undertake trend analysis of microbiological results?	No	Is shelf life testing undertaken?	No		
Microbiological Standards					
Organism	Description	Frequency	Target	Maximum	Sample (g or ml)
E. Coli (cfu/g or ml)		Every Batch	<20	1000	400

	Organism		Description		Frequency	Target	Maximum	Sample (g or ml)
	Enterobacteriaceae (cfu/g or ml)				Every Batch	<200	10000	400
	Staphylococcus Aureus (cfu/g or ml)				Every Batch	<20	1000	400
	Aerobic Colony Count (ACC) (cfu/g or ml)				Every Batch	<100000	10000000	400
CONFIGURATION	Case Configuration					Inner Pack Configuration		
	Total Quantity of Inner Components in Outer Case		1 Units					
	Is the Outer Case Splittable?		No					
PRODUCT WEIGHTS	Inner Component							
	Variable Weight Consumer Item		No					
	Weight/Volume							
PRODUCT DIMENSIONS	6.2g							
	Outer Case							
	Outer Case Gross Weight		2.14 kg					
	Outer Case Net Weight		2.04 kg					
	Inner Component							
	Inner Component Depth		200 mm					
	Inner Component Width		150 mm					
PALLET INFORMATION	Inner Component Height		200 mm					
	Outer Case							
	Outer Case Depth		283 mm					
	Outer Case Width		214 mm					
	Outer Case Height		94 mm					
	Quantity of Cases Per Pallet Layer		18 Cases		Pallet Height		1.5 MTR	
	Quantity of Layers Per Pallet		14 Layers		Pallet Gross Weight		559 kg	
PACKAGING	Quantity of Cases Per Pallet		252 Cases					
	Inner Component Packaging							
	Type	Materials		Weight	Recycled Plastic %	Recyclable	Returnable	Composite
	Bag	Plastic		6.2 g	- %			
	Outer Case Packaging							
	Type	Materials		Weight	Recycled Plastic %	Recyclable	Returnable	Composite
	Case	Paper/Cardboard		100 g	- %			
	Transport Packaging							
	Type	Materials		Weight	Recycled Plastic %	Recyclable	Returnable	Composite
	Other	Plastic		190 g	- %		Yes	
OTHER INFORMATION	Other	Wood		20000 g	- %		Yes	
	Identification/Health Marks					UK HU 035 UK		

CONTACT
INFORMATION

Address
Seafish UK
45 Wassand Street
Hull
HU3 4AN
United Kingdom

P: (Phone) 01482 223648

Complaints Contact
Katarzyna Czekalik
Technical Coordinator
kasia@sheltie.co.uk

P: (Phone) 01482223648

Technical Contact
Leigh McKenna
Technical Manager
leigh.mckenna@sheltie.co.uk

P: (Phone) 01482 223648

Commercial Contact
Emma Acklam
Sales and Marketing Director
ela@sheltie.co.uk

P: (Phone) 01482 223648

The information on the [Erudus System](#) has been supplied by the manufacturers of the products and, whilst the owners of the Erudus System take steps to ensure the information is regularly updated, they give no warranty and no guarantee that the information is accurate. Product information and ingredients may change, please always read product labels carefully in addition to using the information provided by Erudus.

We do not accept liability for any inaccuracies or incorrect information contained on this site.
Please visit <http://www.erudus.com/terms-and-conditions> for full terms and conditions.