

# Potato Croquettes (crumbed) Cut Ends - Not Prefried & Frozen 4x16.59g

CROQ BC FOODSERV 4x2.5KG 5196)

## PRODUCT DESCRIPTION

Potato croquettes

Brand	Lutosa UK
Manufacturer Product Code	1016443-6K
Product Type	Food
Product Category	Potato Products
Storage Type	Frozen
Erudus ID	5639a31e621a4bb5910d560f6c9b181c
Specification Type	Fruit and Vegetables

Inner Component GTIN	5410376633095
Inner Pack GTIN	5410376633095
Outer Case GTIN	15410376633092



BARLEY  
FREE



CELERY  
FREE



CRUSTACEA  
FREE



EGG  
FREE



FISH  
FREE



LUPIN  
FREE



MUSTARD  
FREE



MOLLUSC  
FREE



NUT  
FREE



OAT  
FREE



PEANUT  
FREE



RYE  
FREE



SESAME  
FREE



SOYA  
FREE



Suitable for



Suitable for







## INGREDIENTS

**Ingredient Declaration**  
Mashed potatoes, breadcrumbs (**wheat** flour, yeast, paprika powder, turmeric powder), potato flakes, skimmed **milk** powder, salt, **wheat** flour, spice extracts, emulsifier E471, stabilisers E464-E450i, antioxidant E223 (Sodium metabisulphite).

## ALLERGENS

Product Contains:	
Celery/Celeriac	No
Cereals Containing Gluten	Yes
Barley	No
Oats	No
Rye	No
Wheat (including Spelt and Khorasan)	Yes
Crustacea	No
Eggs	No
Fish	No
Lupin	No
Milk	Yes
Molluscs	No
Mustard	No
Nuts (Tree)	No
Almond nuts	No
Brazil nuts	No
Cashew nuts	No
Hazelnuts	No
Macadamia (Queensland) nuts	No
Pecan nuts	No
Pistachio nuts	No
Walnuts	No
Peanuts	No
Sesame Seeds	No
Soybeans	No
Sulphur Dioxide and Sulphites	Yes

FREE FROM CLAIMS

Allergen Statement On Pack

Mashed potatoes, breadcrumbs (wheat flour, yeast, paprika powder, turmeric powder), potato flakes, skimmed milk powder, salt, wheat flour, spice extracts, emulsifier E471, stabilisers E464- E450i, antioxidant E223 (Sodium metabisulphite).

Free From Barley	Yes
Free From Celery/Celeriac	Yes
Free From Crustacea	Yes
Free From Eggs	Yes
Free From Fish	Yes
Free From Lupin	Yes
Free From Molluscs	Yes

Free From Mustard	Yes
Free From Nuts	Yes
Free From Oats	Yes
Free From Peanuts	Yes
Free From Rye	Yes
Free From Sesame	Yes
Free From Soybeans	Yes

SUPPLEMENTARY INGREDIENT INFORMATION

Palm Oil	No
Hydrogenated Vegetable Oil/Fat	No
GM Protein/DNA	No

ADDITIVES

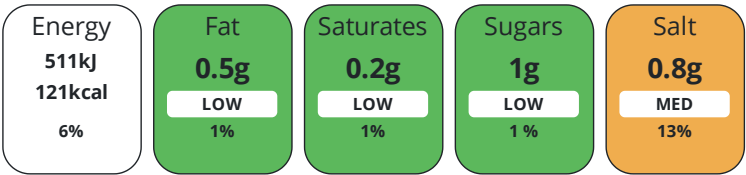
Product Contains:	
Artificial Antioxidants	No
Artificial Colours	No
Artificial Flavour Enhancers	No
Artificial Flavourings	No
Artificial Preservatives	No
Artificial Sweeteners	No

DIET SUITABILITY

Vegan Diet	No	Vegetarian Diet	Suitable for
Halal Diet	Suitable for	Kosher Diet	No

NUTRITIONAL INFORMATION

Each 100g/ml portion contains:



of your reference intake.

Typical values per 100g/ml : Energy 121kcal / 511kJ

Nutrient	per 100g	RI per 100g
Energy (kJ)	511 kJ	6%
Energy (kcal)	121 kcal	6%
Fat	0.5 g	1%
of which Saturates	0.2 g	1%
Carbohydrate	25 g	10%
of which Sugars	1 g	1%
Fibre	2 g	
Protein	3 g	6%
Salt	0.8 g	13%
Sodium	320 mg	

SUPPLEMENTARY NUTRITIONAL INFORMATION

HANDLING &  
STORAGE  
INFORMATION

Directions For Use

On frozen product (-18°C) Household preparation: Fryer: +/-5 minutes at 180°C/356°F Professional preparation: Fryer: +/- 5 minutes at 180°C/356°F Alternative cooking instructions: Frying pan: +/- 8'30 minutes at a low heat Always cook until golden yellow colour. Do not overcook. When cooking small amounts, reduce cooking time.

Storage Instructions

Do not refreeze once thawed. Transport - Storage: -18°C Storage: - Ice box of the fridge (-6°C): 1 week - Freezer \*\*\* (-18°C): Several months

Shelf Life from Time of Production	720 Days	Exempt From Shelf Life Labelling	No
------------------------------------	----------	----------------------------------	----

ACCREDITATIONS/  
CERTIFICATIONS/  
ASSURANCE  
SCHEMES



Other Accreditation

Please refer to : [www.lutosa.com/uk/downloads](http://www.lutosa.com/uk/downloads)

ORIGIN

Product Country of Origin/Place of Belgium

Provenance

Additional Origin Details

Origin of potatoes : Belgium, France, Netherlands, Germany.

PRODUCT  
CHARACTERISTICS

Standards Testing		
Do you undertake trend analysis of microbiological results?	Yes	Is shelf life testing undertaken? Commercially Sterile
		Yes No

Microbiological Standards

Organism	Description	Frequency	Target	Maximum	Sample (g or ml)
Bacillus Cereus (cfu/g or ml)		Daily	<100	1000	1
Coliforms (cfu/g or ml)		Daily	<1000	10000	1
E. Coli (cfu/g or ml)		Daily	<10	100	1
Listeria Monocytogenes (cfu/g or ml)		Daily	<10	100	1
Staphylococcus Aureus (cfu/g or ml)		Daily	<10	100	1
Total Viable Count (TVC) (cfu/g or ml)		Daily	<100000	1000000	1
Salmonella (cfu/g or ml)		Monthly	=0	0	25
Yeast (cfu/g or ml)		Daily	<100	1000	1
Moulds (cfu/g or ml)		Daily	<100	1000	1

SUPPLEMENTARY INFORMATION

Fried During Manufacture	No
--------------------------	----

ORGANOLEPTICS

Appearance	Potato Croquettes crumbed
Aroma	Typical of a potato product
Taste	Typical of a potato product
Texture	Crispy outside

HAZARD CONTROLS

Metal Detection	Yes	Optical Sorting	Yes
Magnets	Yes		

CONFIGURATION	Case Configuration		Inner Pack Configuration						
	Variable Inner Components in Outer Case	No	Is Inner Pack Splittable?			No			
	Total Quantity of Inner Components in Outer Case	4 Units							
	Total Quantity of Inner Packs in Outer Case	4 Units							
	Is the Outer Case Splittable?	Yes							
PRODUCT WEIGHTS	Inner Component		Inner Pack						
	Variable Weight Consumer Item	No	Inner Pack Gross Weight			2.52 kg			
	Inner Component Weight	16.59 g	Inner Pack Net Weight			2.5 kg			
	e mark	Yes							
	Outer Case								
PRODUCT DIMENSIONS	Outer Case Gross Weight		10.42 kg						
	Outer Case Net Weight		10 kg						
	Inner Component		Inner Pack						
	Inner Component Depth	471 mm	Inner Pack Depth			471 mm			
	Inner Component Width	305 mm	Inner Pack Width			305 mm			
PALLET INFORMATION	Inner Component Height		50 mm		Inner Pack Height			50 mm	
	Outer Case								
	Outer Case Depth	380 mm							
	Outer Case Width	245 mm							
	Outer Case Height	220 mm							
PACKAGING	Quantity of Cases Per Pallet Layer		12 Cases		Pallet Height			1.96 MTR	
	Quantity of Layers Per Pallet		8 Layers		Pallet Gross Weight			1030 kg	
	Quantity of Cases Per Pallet		96 Cases						
	Inner Pack Packaging								
	Type	Materials	Weight	Recycled Plastic %	Recyclable	Returnable	Composite		
Bag	Plastic / LDPE (Low Density Polyethylene)	16.59 g	0 %	No	No				
Outer Case Packaging									
Type	Materials	Weight	Recycled Plastic %	Recyclable	Returnable	Composite			
Case	Paper/Cardboard / Cardboard	350 g	- %	Yes	No				
Transport Packaging									
Type	Materials	Weight	Recycled Plastic %	Recyclable	Returnable	Composite			
Pallet	Wood	30000 g	- %	No	Yes				
OTHER INFORMATION	Intrastat/Taric Code	2004109900		Identification/Health Marks			AERHAI000809		
	Commodity Code	2004109900		Value Added Tax Rate			0%		

CONTACT  
INFORMATION

Address

Lutosa UK  
32A East Street  
St Ives  
PE27 5PD  
England

P: (Phone) 01480465656

The information on the [Erudus System](#) has been supplied by the manufacturers of the products and, whilst the owners of the Erudus System take steps to ensure the information is regularly updated, they give no warranty and no guarantee that the information is accurate. Product information and ingredients may change, please always read product labels carefully in addition to using the information provided by Erudus.

We do not accept liability for any inaccuracies or incorrect information contained on this site.  
Please visit <http://www.erudus.com/terms-and-conditions> for full terms and conditions.