

Changed Jun 23, 2025 09:54

Reviewed Jun 23, 2025 09:54

Erudus ID 2e4ee8085cc6421c91cfab82ddb3966

Version 2.0

Status Published

This specification is published by [Erudus](#) for Country Range Group

Country Range Mixed Vegetables 10 x 1 kg

Mixed Vegetables 10x1kg

PRODUCT DESCRIPTION

A ready to cook frozen mix of diced carrots peas sweetcorn cut beans and broad beans'

Brand	Country Range Group
Label Own Label Code	63610145I
Product Type	Food
Product Category	Vegetables - Frozen
Storage Type	Frozen
Erudus ID	2e4ee8085cc6421c91cfab82ddb3966
Specification Type	Fruit and Vegetables



Inner Component GTIN	5023616364057
Outer Case GTIN	05023616364002



INGREDIENTS

Ingredient Declaration

Diced Carrots (50%), Peas (27%), Sweetcorn (10%), Cut Green Beans (7%), Broad Beans (6%).

ALLERGENS

Product Contains:

Celery/Celeriac	No	Mustard	No
Cereals Containing Gluten	No	Nuts (Tree)	No
Barley	No	Almond nuts	No
Oats	No	Brazil nuts	No
Rye	No	Cashew nuts	No
Wheat (including Spelt and Khorasan)	No	Hazelnuts	No
Crustacea	No	Macadamia (Queensland) nuts	No
Eggs	No	Pecan nuts	No
Fish	No	Pistachio nuts	No
Lupin	No	Walnuts	No
Milk	No	Peanuts	No
Molluscs	No	Sesame Seeds	No
		Soybeans	No
		Sulphur Dioxide and Sulphites	No

FREE FROM CLAIMS

Gluten-Free	Yes
-------------	-----

SUPPLEMENTARY
INGREDIENT
INFORMATION

Palm Oil	No
Hydrogenated Vegetable Oil/Fat	No
GM Protein/DNA	No

ADDITIVES

Product Contains:

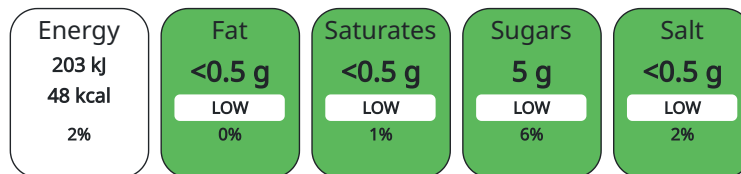
Artificial Antioxidants	No	Artificial Flavourings	No
Artificial Colours	No	Artificial Preservatives	No
Artificial Flavour Enhancers	No	Artificial Sweeteners	No

DIET SUITABILITY

Vegan Diet	Suitable for	Vegetarian Diet	Suitable for
Halal Diet	Suitable for	Kosher Diet	No

NUTRITIONAL
INFORMATION AS
SOLD

Each 100g/ml portion contains:



of your reference intake.

Typical values per 100g/ml : Energy 48kcal / 203kJ

Nutrient	per 100g	RI per 100g	per 75g serving	RI per 75g serving
Energy (kJ)	203 kJ	2%	152.25	2%
Energy (kcal)	48 kcal	2%	36	2%
Fat	0.2 g	0%	0.15 g	0%
of which Saturates	0.1 g	1%	0.08 g	0%
of which Mono-unsaturates	0.03 g		0.02 g	
of which Polyunsaturates	0.07 g		0.05 g	
Carbohydrate	7.4 g	3%	5.55 g	2%
of which Sugars	5 g	6%	3.75 g	4%
of which Polyols	0 g		0 g	
of which Starch	2.4 g		1.8 g	
Fibre	3.7 g		2.78 g	
Protein	2.3 g	5%	1.73 g	3%
Salt	0.1 g	2%	0.08 g	1%
Sodium	30 mg		22.5 mg	
Serving Size	75 g			

Source of Nutritional Information Calculation from known/accepted datasets

VITAMINS AND
MINERALS AS
SOLD

Nutrient	per 100g	RI per 100g	per 75g serving	RI per 75g serving
Vitamin A	561.8 µg	70%	421.35 µg	53%
Vitamin C	10.7 mg	13%	8.03 mg	10%
Folate/Folic Acid	0 µg		0 µg	
Calcium	33.5 mg	4%	25.13 mg	3%
Iron	0.8 mg	6%	0.6 mg	4%
Zinc	0.5 mg	5%	0.38 mg	4%

SUPPLEMENTARY
NUTRITIONAL
INFORMATION

Cholesterol per 100 g/ml (UK/FR)	0 g
Trans Fats per 100 g/ml	0 g
Fat Percentage in Dry Matter per 100 g/ml	0.5 %
Non Milk Extrinsic Sugars per 100 g/ml	4.63 g

HFSS (HIGH IN
FAT, SALT AND
SUGAR)

HFSS Status	No
--------------------	----

HANDLING &
STORAGE
INFORMATION

Directions For Use

For best results cook from frozen. Do not eat raw.

Storage Instructions

*7 Days ** 30 Days *** See Best Before **** See Best Before. To Be Stored At -18°C Or Colder. Ice Making Compartment: 3 Days.
Refrigerator: 24 Hours. Cook On Day Of Purchase If Not Kept Frozen. Do Not Re-Freeze After Thawing.

Shelf Life from Time of Production	547 Days
---	----------

ACCREDITATIONS/
CERTIFICATIONS/
ASSURANCE
SCHEMES
ORIGIN

BRCGS Certified

School Approved (The Requirement for School Food Regulation 2014)

Product Country of Origin	Belgium
----------------------------------	---------

Origin of the Primary Ingredient	Belgium
---	---------

PRODUCT
CHARACTERISTICS
CONFIGURATION

Standards Testing

Case Configuration

Inner Pack Configuration

Total Quantity of Inner Components in Outer Case	10 Units
---	----------

Count per Inner Component	10
----------------------------------	----

Outer Case

Is the Outer Case Splittable?	Yes
--------------------------------------	-----

PRODUCT
WEIGHTS

Inner Component

Variable Weight Consumer Item	No
--------------------------------------	----

Inner Component Weight	1 kg
-------------------------------	------

e mark	Yes
---------------	-----

Outer Case

Outer Case Gross Weight	10.3 kg
--------------------------------	---------

Outer Case Net Weight	10 kg
------------------------------	-------

PRODUCT
DIMENSIONS

Inner Component

Inner Component Depth	270 mm
------------------------------	--------

Inner Component Width	250 mm
------------------------------	--------

Inner Component Height	50 mm
-------------------------------	-------

Outer Case

Outer Case Depth	368 mm
-------------------------	--------

Outer Case Width	235 mm
-------------------------	--------

Outer Case Height	206 mm
--------------------------	--------

PALLET
INFORMATION

Quantity of Cases Per Pallet Layer	12 Cases
---	----------

Pallet Height	2 MTR
----------------------	-------

Quantity of Layers Per Pallet	9 Layers
--------------------------------------	----------

Pallet Gross Weight	1138 kg
----------------------------	---------

Quantity of Cases Per Pallet	108 Cases
-------------------------------------	-----------

PACKAGING

Inner Component Packaging

Type	Materials	Weight	Recycled Material %	Recyclable	Returnable	Composite
Foil	Plastic	7.5 g				

Outer Case Packaging

Type	Materials	Weight	Recycled Material %	Recyclable	Returnable	Composite
Case	Paper/Cardboard	224.2 g				
Case	Other	1.1 g				

Transport Packaging

Type	Materials	Weight	Recycled Material %	Recyclable	Returnable	Composite
Other	Plastic	75.7 g			Yes	
Other	Paper/Cardboard	224.2 g			Yes	

OTHER INFORMATION

Intrastat/Taric Code 07109000

Manufacturer Comments

No

CONTACT INFORMATION

ADDRESS

Country Range Group

Accrington

Lancs

United Kingdom

P: (Phone) 0845 209 3777

The information on the [Erudus System](#) has been supplied by the manufacturers of the products and, whilst the owners of the Erudus System take steps to ensure the information is regularly updated, they give no warranty and no guarantee that the information is accurate. Product information and ingredients may change, please always read product labels carefully in addition to using the information provided by Erudus.

We do not accept liability for any inaccuracies or incorrect information contained on this site.
Please visit <http://www.erudus.com/terms-and-conditions> for full terms and conditions.