

This specification is published by [Erudus](#) for Country Range Group

987083

Country Range Battered MSC Cod Fillets 30 x 80 - 110g

Country Range Battered Msc Cod Fillets 30 X 80 - 110g

PRODUCT DESCRIPTION

Formed skinless boneless cod fillet pieces enrobed in a bubbly batter flash fried

Brand	Country Range Group
Label Own Label Code	MBC03CR
Product Type	Food
Product Category	Seafood - Fish
Storage Type	Frozen
Erudus ID	1f31d16fd10442c98a475255ac4667c0
Specification Type	Legacy



Outer Case GTIN 05023616503005



INGREDIENTS

Ingredient Declaration

Cod (*Gadus Macrocephalus* or *Gadus Morhua*) (**FISH**) (50%), **WHEAT** Flour (contains Calcium Carbonate, Iron, Niacin, Thiamin), Water, Rapeseed Oil, Salt, Maize Starch, **WHEAT** Starch, Raising Agent (Disodium Diphosphate, Sodium Carbonate, Ammonium Carbonate), Yeast Extract, Stabilier (Xanthan gum), Dextrose, Yeast, Sunflower Oil, Sunflower Lecithin.

ALLERGENS

Product Contains:

Celery/Celeriac	No	Mustard	No
Cereals Containing Gluten	Yes	Nuts (Tree)	No
Barley	No	Almond nuts	No
Oats	No	Brazil nuts	No
Rye	No	Cashew nuts	No
Wheat (including Spelt and Khorasan)	Yes	Hazelnuts	No
Gluten content <20ppm	No	Macadamia (Queensland) nuts	No
Crustacea	No	Pecan nuts	No
Eggs	No	Pistachio nuts	No
Fish	Yes	Walnuts	No
Lupin	No	Peanuts	No
Milk	No	Sesame Seeds	No
Molluscs	No	Soybeans	No
		Sulphur Dioxide and Sulphites	No

SUPPLEMENTARY
INGREDIENT
INFORMATION

Palm Oil	No	Alcoholic Strength %Vol (ABV)	0 % Vol
Hydrogenated Vegetable Oil/Fat	No		
GM Protein/DNA	No		

ADDITIVES

Product Contains:

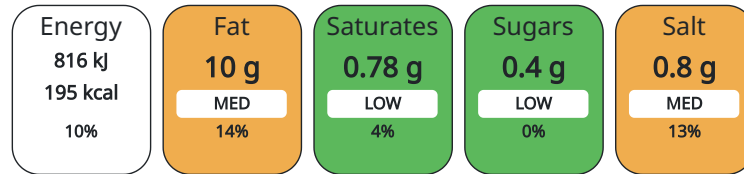
Artificial Antioxidants	No	Artificial Flavourings	No
Artificial Colours	No	Artificial Preservatives	No
Artificial Flavour Enhancers	No	Artificial Sweeteners	No

DIET SUITABILITY

Suitable for Coeliacs	No	Halal Diet	No
Kosher Diet	No	Vegetarian Diet	No
Vegan Diet	No		

NUTRITIONAL
INFORMATION

Each 100g/ml portion contains:



of your reference intake.

Typical values per 100g/ml : Energy 195kcal / 816kJ

Nutrient	per 100g/ml	RI per 100g/ml	per 95g/ml serving	RI per 95g/ml serving
Energy (kJ)	816 kJ	10%	775.2	9%
Energy (kcal)	195 kcal	10%	185.25	9%
Fat	10 g	14%	9.5 g	14%
of which Saturates	0.78 g	4%	0.74 g	4%
of which Mono-unsaturates	5.98 g		5.68 g	
of which Polyunsaturates	2.61 g		2.48 g	
Carbohydrate	16.4 g	6%	15.58 g	6%
of which Sugars	0.4 g	0%	0.38 g	0%
of which Polyols	0 g		0 g	
of which Starch	0 g		0 g	
Fibre	0.9 g		0.86 g	
Protein	9.6 g	19%	9.12 g	18%
Salt	0.8 g	13%	0.76 g	13%
Sodium	323 mg		306.85 mg	

Serving Size 95 g

VITAMINS AND
MINERALS

Nutrient	per 100g/ml	RI per 100g/ml	per 95g/ml serving	RI per 95g/ml serving
Vitamin A	0 µg		0 µg	
Vitamin C	0 mg		0 mg	
Folate/Folic Acid	0 µg		0 µg	
Calcium	0 mg		0 mg	
Iron	0 mg		0 mg	
Zinc	0 mg		0 mg	

SUPPLEMENTARY
NUTRITIONAL
INFORMATION

Cholesterol per 100 g/ml (UK/FR)	0 g
Trans Fats per 100 g/ml	0.16 g
Fat Percentage in Dry Matter per 100 g/ml	0 %
Non Milk Extrinsic Sugars per 100 g/ml	0 g

HFSS (HIGH IN
FAT, SALT AND
SUGAR)

HFSS Status	No
--------------------	----

HANDLING &
STORAGE
INFORMATION

Directions For Use

Deep fry in oil at 180°C for 4 - 6 minutes. Alternatively place on a baking tray in a pre-heated oven at 200°C/Gas mark 6 for approximately 18 minutes. This is a raw product and must be cooked to a minimum temperature of 75°C for 30 seconds or equivalent. MSC-C-50151

Storage Instructions

Keep frozen at -18°C or below Do not refreeze after thawing

Shelf Life from Time of Production	547 Days
---	----------

ACCREDITATIONS/
CERTIFICATIONS/
ASSURANCE
SCHEMES
ORIGIN

BRCGS Certified

Marine Stewardship Council (MSC)

Product Country of Origin	United Kingdom
----------------------------------	----------------

PRODUCT
CHARACTERISTICS
CONFIGURATION

Standards Testing

Case Configuration

Inner Pack Configuration

Total Quantity of Inner Components in Outer Case	1 Units
---	---------

Outer Case

Is the Outer Case Splittable?	No
--------------------------------------	----

PRODUCT
WEIGHTS

Inner Component

Variable Weight Consumer Item	No
--------------------------------------	----

Net Drained Weight	0 kg
---------------------------	------

Weight/Volume

30 x 80 - 110g, 2.40Kg

Outer Case

Outer Case Gross Weight	3.47 kg
--------------------------------	---------

Outer Case Net Weight	3.3 kg
------------------------------	--------

PRODUCT
DIMENSIONS

Inner Component

Inner Component Depth	335 mm
------------------------------	--------

Inner Component Width	252 mm
------------------------------	--------

Inner Component Height	104 mm
-------------------------------	--------

Outer Case

Outer Case Depth	333 mm
-------------------------	--------

Outer Case Width	250 mm
-------------------------	--------

Outer Case Height	100 mm
--------------------------	--------

PALLET
INFORMATION

Quantity of Cases Per Pallet Layer	14 Cases
---	----------

Pallet Height	1.75 MTR
----------------------	----------

Quantity of Layers Per Pallet	16 Layers
--------------------------------------	-----------

Pallet Gross Weight	772.8 kg
----------------------------	----------

Quantity of Cases Per Pallet	224 Cases
-------------------------------------	-----------

PACKAGING

Inner Component Packaging

Type	Materials	Weight	Recycled Material %	Recyclable	Returnable	Composite
Box	Other	10 g				

Outer Case Packaging

Type	Materials	Weight	Recycled Material %	Recyclable	Returnable	Composite
Case	Other	2 g				

OTHER INFORMATION

Intrastat/Taric Code	16041991	Identification/Health Marks	GB HU044
-----------------------------	----------	------------------------------------	----------

Manufacturer Comments

N/A

CONTACT INFORMATION

ADDRESS

Country Range Group
Accrington
Lancs
United Kingdom

P: (Phone) 0845 209 3777

The information on the [Erudus System](#) has been supplied by the manufacturers of the products and, whilst the owners of the Erudus System take steps to ensure the information is regularly updated, they give no warranty and no guarantee that the information is accurate. Product information and ingredients may change, please always read product labels carefully in addition to using the information provided by Erudus.

We do not accept liability for any inaccuracies or incorrect information contained on this site.
Please visit <http://www.erudus.com/terms-and-conditions> for full terms and conditions.