

Changed May 27, 2026 12:45

Reviewed May 27, 2026 12:45

Erudus ID 12323d4da6c74799814abc92238f3f65

Version 2.0

Status Published

This specification is published by [Erudus](#) for Country Range Group

Country Range Choice Garden Peas 10 x 1 kg

Garden Peas 10x1kg

PRODUCT DESCRIPTION

Ready to cook Frozen Choice Garden Peas

Brand	Country Range Group
Label Own Label Code	16610145I
Product Type	Food
Product Category	Vegetables - Frozen
Storage Type	Frozen
Erudus ID	12323d4da6c74799814abc92238f3f65
Specification Type	Fruit and Vegetables



Inner Component GTIN	5023616363753
Outer Case GTIN	05023616363708



INGREDIENTS

Ingredient Declaration

Garden Peas.

ALLERGENS

Product Contains:

Celery/Celeriac	No	Mustard	No
Cereals Containing Gluten	No	Nuts (Tree)	No
Barley	No	Almond nuts	No
Oats	No	Brazil nuts	No
Rye	No	Cashew nuts	No
Wheat (including Spelt and Khorasan)	No	Hazelnuts	No
Crustacea	No	Macadamia (Queensland) nuts	No
Eggs	No	Pecan nuts	No
Fish	No	Pistachio nuts	No
Lupin	No	Walnuts	No
Milk	No	Peanuts	No
Molluscs	No	Sesame Seeds	No
		Soybeans	No
		Sulphur Dioxide and Sulphites	No

SUPPLEMENTARY INGREDIENT INFORMATION

Palm Oil	No
Hydrogenated Vegetable Oil/Fat	No
GM Protein/DNA	No

ADDITIVES

Product Contains:

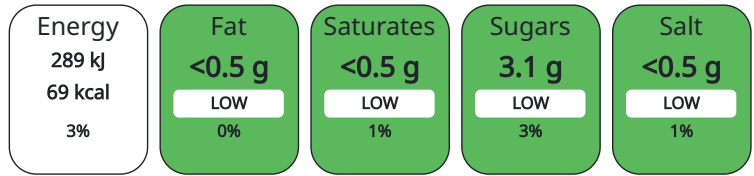
Artificial Antioxidants	No	Artificial Flavourings	No
Artificial Colours	No	Artificial Preservatives	No
Artificial Flavour Enhancers	No	Artificial Sweeteners	No

DIET SUITABILITY

Vegan Diet	Suitable for	Vegetarian Diet	Suitable for
Halal Diet	Suitable for	Kosher Diet	No

NUTRITIONAL INFORMATION AS SOLD

Each 100g/ml portion contains:



of your reference intake.

Typical values per 100g/ml : Energy 69kcal / 289kj

Nutrient	per 100g	RI per 100g	per 75g serving	RI per 75g serving
Energy (kJ)	289.3 kJ	3%	216.98	3%
Energy (kcal)	68.7 kcal	3%	51.53	3%
Fat	0.3 g	0%	0.23 g	0%
of which Saturates	0.1 g	1%	0.08 g	0%
of which Mono-unsaturates	0 g		0 g	
of which Polyunsaturates	0.1 g		0.08 g	
Carbohydrate	9 g	3%	6.75 g	3%
of which Sugars	3.1 g	3%	2.33 g	3%
of which Polyols	0 g		0 g	
of which Starch	5.9 g		4.43 g	
Fibre	4.6 g		3.45 g	
Protein	5.2 g	10%	3.9 g	8%
Salt	0.08 g	1%	0.06 g	1%
Sodium	33 mg		24.75 mg	
Serving Size	75 g			

VITAMINS AND MINERALS AS SOLD

Nutrient	per 100g	RI per 100g	per 75g serving	RI per 75g serving
Vitamin A	82 µg	10%	61.5 µg	8%
Vitamin C	20 mg	25%	15 mg	19%
Folate/Folic Acid	0 µg		0 µg	
Calcium	44 mg	6%	33 mg	4%
Iron	1.6 mg	11%	1.2 mg	9%
Zinc	1.2 mg	12%	0.9 mg	9%

SUPPLEMENTARY NUTRITIONAL INFORMATION

Cholesterol per 100 g/ml (UK/FR)	0 g
Trans Fats per 100 g/ml	0 g
Fat Percentage in Dry Matter per 100 g/ml	0.27 %
Non Milk Extrinsic Sugars per 100 g/ml	3.1 g

HFSS (HIGH IN FAT, SALT AND SUGAR) HANDLING & STORAGE INFORMATION

HFSS Status No

Directions For Use

For best results cook from frozen. Do not eat raw.

Storage Instructions

*7 Days **30 Days ***See Best Before ****See Best Before. To be stored at -18°C or colder. Ice making compartment: 3days. Refrigerator: 24 hours. Cook on day of purchase if not kept frozen. Do not re-freeze after thawing.

Shelf Life from Time of Production 547 Days

ACCREDITATIONS/ CERTIFICATIONS/ ASSURANCE SCHEMES ORIGIN

BRCGS Certified

School Approved (The Requirement for School Food Regulation 2014)

Product Country of Origin Belgium

Origin of the Primary Ingredient Belgium

PRODUCT CHARACTERISTICS CONFIGURATION

Standards Testing

Case Configuration

Inner Pack Configuration

Total Quantity of Inner Components in 10 Units

Count per Inner Component 10

Outer Case

Is the Outer Case Splittable? Yes

PRODUCT WEIGHTS

Inner Component

Variable Weight Consumer Item No

Inner Component Weight 1 kg

e mark Yes

Outer Case

Outer Case Gross Weight 10.29 kg

Outer Case Net Weight 10 kg

PRODUCT DIMENSIONS

Inner Component

Inner Component Depth 260 mm

Inner Component Width 250 mm

Inner Component Height 50 mm

Outer Case

Outer Case Depth 368 mm

Outer Case Width 235 mm

Outer Case Height 191 mm

PALLET INFORMATION

Quantity of Cases Per Pallet Layer 9 Cases

Pallet Height 1.9 MTR

Quantity of Layers Per Pallet 12 Layers

Pallet Gross Weight 1138 kg

Quantity of Cases Per Pallet 108 Cases

PACKAGING

Inner Component Packaging

Type	Materials	Weight	Recycled Material %	Recyclable	Returnable	Composite
Foil	Plastic	7.2 g				

Outer Case Packaging

Type	Materials	Weight	Recycled Material %	Recyclable	Returnable	Composite
Case	Paper/Cardboard	230.8 g				
Case	Other	1.1 g				

Transport Packaging

Type	Materials	Weight	Recycled Material %	Recyclable	Returnable	Composite
Other	Plastic	73 g			Yes	
Other	Paper/Cardboard	230.8 g			Yes	

OTHER INFORMATION

Intrastat/Taric Code	7102100	Identification/Health Marks	N/A
Manufacturer Comments			
No			

CONTACT INFORMATION

ADDRESS

Country Range Group
 Accrington
 Lancs
 United Kingdom

P: (Phone) 0845 209 3777

The information on the [Erudus System](#) has been supplied by the manufacturers of the products and, whilst the owners of the Erudus System take steps to ensure the information is regularly updated, they give no warranty and no guarantee that the information is accurate. Product information and ingredients may change, please always read product labels carefully in addition to using the information provided by Erudus.

We do not accept liability for any inaccuracies or incorrect information contained on this site.
 Please visit <http://www.erudus.com/terms-and-conditions> for full terms and conditions.