

# Resolution Wholetail Scampi in Breadcrumbs 10\*450g

Resolution Scampi 10x450g

## PRODUCT DESCRIPTION

Whole tails of Scampi coated in a crispy crumb. With added water. Contains one or more tails per piece.

<b>Brand</b>	Whitby Seafoods Ltd
<b>Manufacturer Product Code</b>	1613
<b>Product Type</b>	Food
<b>Product Category</b>	Prawns, Shrimp & Scampi
<b>Storage Type</b>	Frozen
<b>Erudus ID</b>	5717ca712ae347fd849f50dcf948e86b
<b>Specification Type</b>	Fish and Seafood



<b>Inner Component GTIN</b>	5016316016135
<b>Outer Case GTIN</b>	05016316916138



## INGREDIENTS

### Ingredient Declaration

Scampi (**CRUSTACEANS**(32%), Breadcrumbs (**WHEAT** Flour (**WHEAT** Flour, Calcium Carbonate, Iron, Niacin, Thiamin), Rapeseed oil, Yeast, Salt), Batter (Water, **WHEAT** Flour (**WHEAT** Flour, Calcium Carbonate, Iron, Niacin, Thiamin), Salt, Water), Stabilisers: E339, E451.

## ALLERGENS

Product Contains:

<b>Celery/Celeriac</b>	No	<b>Mustard</b>	No
<b>Cereals Containing Gluten</b>	Yes	<b>Nuts (Tree)</b>	No
<b>Barley</b>	No	<b>Almond nuts</b>	No
<b>Oats</b>	No	<b>Brazil nuts</b>	No
<b>Rye</b>	No	<b>Cashew nuts</b>	No
<b>Wheat (including Spelt and Khorasan)</b>	Yes	<b>Hazelnuts</b>	No
<b>Crustacea</b>	Yes	<b>Macadamia (Queensland) nuts</b>	No
<b>Eggs</b>	No	<b>Pecan nuts</b>	No
<b>Fish</b>	May Contain	<b>Pistachio nuts</b>	No
<b>Lupin</b>	No	<b>Walnuts</b>	No
<b>Milk</b>	No	<b>Peanuts</b>	No
<b>Molluscs</b>	May Contain	<b>Sesame Seeds</b>	No
		<b>Soybeans</b>	No
		<b>Sulphur Dioxide and Sulphites</b>	No

Risk Source:

<b>Fish (Risk Source)</b>	Factory	<b>Molluscs (Risk Source)</b>	Factory
---------------------------	---------	-------------------------------	---------

### Additional Allergen Information

For allergens including cereals containing GLUTEN, see ingredients declaration in BOLD. May also contain FISH and MOLLUSCS.

SUPPLEMENTARY  
INGREDIENT  
INFORMATION

<b>Palm Oil</b>	No
<b>Hydrogenated Vegetable Oil/Fat</b>	No
<b>GM Protein/DNA</b>	No

ADDITIVES

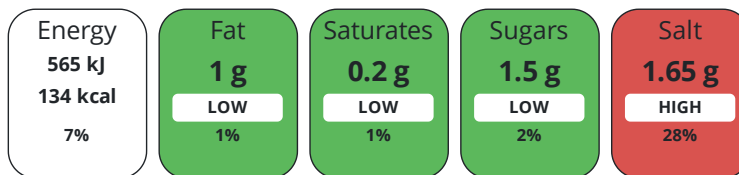
Product Contains:

<b>Artificial Antioxidants</b>	No	<b>Artificial Flavourings</b>	No
<b>Artificial Colours</b>	No	<b>Artificial Preservatives</b>	No
<b>Artificial Flavour Enhancers</b>	No	<b>Artificial Sweeteners</b>	No
<b>Halal Diet</b>	No	<b>Kosher Diet</b>	No

DIET  
SUITABILITY

NUTRITIONAL  
INFORMATION

Each 100g/ml portion contains:



of your reference intake.

Typical values per 100g/ml : Energy 134kcal / 565kj

Nutrient	per 100g	RI per 100g
<b>Energy (kJ)</b>	565 kJ	7%
<b>Energy (kcal)</b>	134 kcal	7%
<b>Fat</b>	1 g	1%
<b>of which Saturates</b>	0.2 g	1%
<b>Carbohydrate</b>	23.8 g	9%
<b>of which Sugars</b>	1.5 g	2%
<b>Protein</b>	8.1 g	16%
<b>Salt</b>	1.65 g	28%

**Source of Nutritional Information**      Manufacturers analysis

SUPPLEMENTARY  
NUTRITIONAL  
INFORMATION

HANDLING &  
STORAGE  
INFORMATION

**Directions For Use**

Deep fry from frozen Pre-heat oil to 180°C/350°F. Cook for approximately 4 minutes until crisp and golden brown. Once cooled do not reheat

**Storage Instructions**

Store at -18°C or colder until the best before date

**Shelf Life from Time of Production**      547 Days

ACCREDITATIONS/  
CERTIFICATIONS/  
ASSURANCE  
SCHEMES  
ORIGIN

**BRCGS Certified**

**Other Accreditation**

**Product Country of Origin**      United Kingdom

**Additional Origin Details**

Approved Suppliers sourced from North Sea / Irish Sea Breadcrumbs: Newleyweds Water: Whitby Seafoods Filtered Borehole Water Batter: Newleyweds Stabiliser : Fibrisol

**Origin of the Primary Ingredient**      United Kingdom

PRODUCT  
CHARACTERISTICS

Standards Testing

**Do you undertake trend analysis of microbiological results?** Yes

Microbiological Standards

Organism	Description	Frequency	Target	Maximum	Sample (g or ml)
E. Coli (cfu/g or ml)		Annually	<10	10	1
Salmonella (cfu/g or ml)		Annually	<0	0	25
Coagulase-positive Staphylococci (cfu/g or ml)		Annually	<10	100	1

HAZARD CONTROLS

**Metal Detection** Yes

CONFIGURATION

Case Configuration Inner Pack Configuration

**Total Quantity of Inner Components in Outer Case** 10 Units

**Is the Outer Case Splittable?** No

PRODUCT WEIGHTS

Inner Component

**Variable Weight Consumer Item** No

**Inner Component Weight** 450 g

Outer Case

**Outer Case Gross Weight** 4.73 kg

**Outer Case Net Weight** 4.5 kg

PRODUCT DIMENSIONS

Inner Component

**Inner Component Depth** 280 mm

**Inner Component Width** 190 mm

**Inner Component Height** 30 mm

Outer Case

**Outer Case Depth** 323 mm

**Outer Case Width** 233 mm

**Outer Case Height** 146 mm

PALLET INFORMATION

**Quantity of Cases Per Pallet Layer** 10 Cases **Pallet Type** UK Standard Pallet

**Quantity of Layers Per Pallet** 15 Layers **Pallet Height** 2.3 MTR

**Quantity of Cases Per Pallet** 150 Cases **Pallet Gross Weight** 737 kg

PACKAGING

Inner Component Packaging

Type	Materials	Weight	Recycled Plastic %	Recyclable	Returnable	Composite
Bag	Plastic	7 g	- %			
Bag	Other	8 g	- %			

Outer Case Packaging

Type	Materials	Weight	Recycled Plastic %	Recyclable	Returnable	Composite
Case	Paper/Cardboard	211 g	- %			

Transport Packaging

Type	Materials	Weight	Recycled Plastic %	Recyclable	Returnable	Composite
Other	Plastic	350 g	- %		Yes	
Other	Wood	28000 g	- %		Yes	

**Manufacturer Comments**

Amount in Bag: 24 (+/- 4)

CONTACT  
INFORMATION

Address

Whitby Seafoods Ltd  
Fairfield way  
Whitby Business park  
Whitby  
North Yorkshire  
YO22 4PU  
England

Technical Contact

Neve Saltmarsh  
Technical Services Coordinator  
neve.saltmarsh@whitby-seafoods.com

~~P. (Phone)~~ 01947 606101

Complaints Contact

Neve Saltmarsh  
Technical Services Coordinator  
neve.saltmarsh@whitby-seafoods.com

The information on the [Erudus System](#) has been supplied by the manufacturers of the products and, whilst the owners of the Erudus System take steps to ensure the information is regularly updated, they give no warranty and no guarantee that the information is accurate. Product information and ingredients may change, please always read product labels carefully in addition to using the information provided by Erudus.

We do not accept liability for any inaccuracies or incorrect information contained on this site.  
Please visit <http://www.erudus.com/terms-and-conditions> for full terms and conditions.