

Changed Oct 10, 2025 08:01

Reviewed Oct 10, 2025 08:01

Erudus ID f06c172e113146c285bf9a02f9828ee3

Version 1.0

Status Published

985020

Frozen cherry scones



Frozen Cherry Scones X50 50x120g

PRODUCT DESCRIPTION

Frozen cherry scones

Brand	Ashers Baking Company Ltd
Manufacturer Product Code	01106
Product Type	Food
Product Category	Other
Storage Type	Frozen
Erudus ID	f06c172e113146c285bf9a02f9828ee3
Specification Type	Generic

Outer Case GTIN 5096627011067



INGREDIENTS

Ingredient Declaration

Scone Blend [WHEAT Flour (WHEAT Flour, Calcium, Niacin, Iron, Folic Acid, Thiamin), Sugar, Vegetable Oil (Palm, Rapeseed), Whey Powder(MILK), Dextrose, Modified Starch, Raising Agents (E450(i), E500(ii)), Salt], Water, Cherries (8%) EGG.

ALLERGENS

Product Contains:

Celery/Celery	No	Mustard	May Contain
Cereals Containing Gluten	Yes	Nuts (Tree)	May Contain
Barley	May Contain	Almond nuts	May Contain
Oats	May Contain	Brazil nuts	May Contain
Rye	May Contain	Cashew nuts	May Contain
Wheat (including Spelt and Khorasan)	Yes	Hazelnuts	May Contain
Crustacea	No	Macadamia (Queensland) nuts	May Contain
Eggs	Yes	Pecan nuts	May Contain
Fish	No	Pistachio nuts	May Contain
Lupin	No	Walnuts	May Contain
Milk	Yes	Peanuts	May Contain
Molluscs	No	Sesame Seeds	May Contain
		Soybeans	May Contain
		Sulphur Dioxide and Sulphites	May Contain

Risk Source:

Barley (Risk Source)	Factory	Oats (Risk Source)	Factory
Rye (Risk Source)	Factory	Mustard (Risk Source)	Factory
Tree Nuts (Risk Source)	Factory	Almond nuts (Risk Source)	Factory
Brazil nuts (Risk Source)	Factory	Cashew nuts (Risk Source)	Factory
Hazelnuts (Risk Source)	Factory	Macadamia nuts (Risk Source)	Factory
Pecan nuts (Risk Source)	Factory	Pistachio nuts (Risk Source)	Factory
Walnuts (Risk Source)	Factory	Peanuts (Risk Source)	Factory
Sesame Seeds (Risk Source)	Factory		
Sulphur Dioxide and Sulphites (Risk Source)	Factory		

Allergen Statement On Pack

For allergens, including cereals containing GLUTEN, see ingredients in CAPITALS. Not suitable for EGG, MUSTARD, NUTS, PEANUTS, SESAME, SOYA, SULPHITES allergy sufferers.

SUPPLEMENTARY
INGREDIENT
INFORMATION

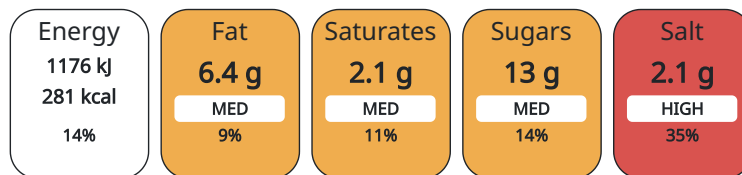
Palm Oil	Yes
Is palm oil sustainably sourced?	Yes
GM Protein/DNA	No

ADDITIVES

Product Contains:

NUTRITIONAL
INFORMATION AS
SOLD

Each 100g/ml portion contains:



of your reference intake.

Typical values per 100g/ml : Energy 281kcal / 1176kJ

Nutrient	per 100g	RI per 100g
Energy (kJ)	1176 kJ	14%
Energy (kcal)	281 kcal	14%
Fat	6.4 g	9%
of which Saturates	2.1 g	11%
Carbohydrate	46 g	18%
of which Sugars	13 g	14%
Protein	6.8 g	14%
Salt	2.1 g	35%

Source of Nutritional Information Calculation from known/accepted datasets

HANDLING &
STORAGE
INFORMATION

Directions For Use

Remove from freezer, defrost before use. For best results consume within 24 hours

Storage Instructions

Keep Frozen at < -18°C

Shelf Life from Time of Production 365 Days

ACCREDITATIONS/
CERTIFICATIONS/
ASSURANCE
SCHEMES

SALSA (Safe & Local Supplier Approval)

ORIGIN	Product Country of Origin	Northern Ireland				
	Origin of the Primary Ingredient	Not Applicable				
PRODUCT CHARACTERISTICS	Standards Testing					
	Do you undertake trend analysis of microbiological results?	Yes	Is shelf life testing undertaken?		Yes	
	Microbiological Standards					
	Organism	Description	Frequency	Target	Maximum	Sample (g or ml)
	Total Viable Count (TVC) (cfu/g or ml)		Occasionally	<100000	1000000	10
	Enterobacteriaceae (cfu/g or ml)		Occasionally	<100	10000	10
	E. Coli (cfu/g or ml)		Occasionally	<20	100	10
	Staphylococcus Aureus (cfu/g or ml)		Occasionally	<20	10000	10
	Yeast (cfu/g or ml)		Occasionally	<1000	10000	10
	Moulds (cfu/g or ml)		Occasionally	<1000	10000	10
Listeria Monocytogenes (cfu/g or ml)		Occasionally	<0	0	10	
HAZARD CONTROLS						
CONFIGURATION	Metal Detection	Yes				
	Case Configuration	Inner Pack Configuration				
	Variable Inner Components in Outer Case	No				
	Total Quantity of Inner Components in Outer Case	50 Units				
	Is the Outer Case Splittable?	No				
PRODUCT WEIGHTS	Inner Component					
	Inner Component Weight	120 g				
	e mark	No				
	Outer Case					
	Outer Case Gross Weight	5.7 kg				
Outer Case Net Weight	5.5 kg					
PRODUCT DIMENSIONS	Inner Component					
	Inner Component Depth	90 mm				
	Inner Component Width	85 mm				
	Inner Component Height	40 mm				
	Outer Case					
	Outer Case Depth	407 mm				
	Outer Case Width	302 mm				
	Outer Case Height	202 mm				
PALLET INFORMATION	Quantity of Cases Per Pallet Layer	7 Cases	Pallet Type		UK Standard Pallet	
	Quantity of Layers Per Pallet	5 Layers	Pallet Height		1.01 MTR	
	Quantity of Cases Per Pallet	35 Cases	Pallet Gross Weight		199.5 kg	
	OTHER INFORMATION					

CONTACT
INFORMATION

Address

Ashers Baking Company Ltd
581 Doagh Road
Ballyearl
Newtownabbey
County Antrim
BT365RZ
United Kingdom

[P: \(Phone\) 02890836686](tel:02890836686)

Complaints Contact

Marita Jackson
Quality Manager
quality@ashersbakingco.com

[P: \(Phone\) 02890836686](tel:02890836686)

Technical Contact

Marita Jackson
Quality Manager
quality@ashersbakingco.com

[P: \(Phone\) 02890836686](tel:02890836686)

Commercial Contact

Colin Donaldson
Sales Manager
wholesale@ashersbakingco.com

[P: \(Phone\) 07546511425](tel:07546511425)

The information on the [Erudus System](#) has been supplied by the manufacturers of the products and, whilst the owners of the Erudus System take steps to ensure the information is regularly updated, they give no warranty and no guarantee that the information is accurate. Product information and ingredients may change, please always read product labels carefully in addition to using the information provided by Erudus.

We do not accept liability for any inaccuracies or incorrect information contained on this site.
Please visit <http://www.erudus.com/terms-and-conditions> for full terms and conditions.