

Changed Feb 05, 2026 12:30

Reviewed Feb 05, 2026 12:28

Erudus ID 3d8b859ef2744a7faa9b12c05e469157

Version 6.0

Status Published

This specification is published by [Erudus](#) for Country Range Group

Country Range Mashed Potato 4 x 2.5 kg

Mashed Potato 4x2.5kg

PRODUCT DESCRIPTION

Lightly Seasoned Mashed Potato.

Brand	Country Range Group
Label Own Label Code	12110
Product Type	Food
Product Category	Potato Products
Storage Type	Frozen
Erudus ID	3d8b859ef2744a7faa9b12c05e469157
Specification Type	Fruit and Vegetables



Inner Component GTIN	5023616423556
Outer Case GTIN	05023616423501



INGREDIENTS

Ingredient Declaration

Potato, Water, Vegetable Margarine (Palm Oil, Rapeseed Oil, Salt, Emulsifier (Mono- and diglycerides of fatty acids), Antioxidant (Citric acid), Natural Flavour), Whole MILK Powder, Salt, Emulsifier (Mono- and diglycerides of fatty acids), White Pepper, Nutmeg Extract, Mace

ALLERGENS

Product Contains:

Celery/Celeriac	No	Mustard	No
Cereals Containing Gluten	No	Nuts (Tree)	No
Barley	No	Almond nuts	No
Oats	No	Brazil nuts	No
Rye	No	Cashew nuts	No
Wheat (including Spelt and Khorasan)	No	Hazelnuts	No
Crustacea	No	Macadamia (Queensland) nuts	No
Eggs	No	Pecan nuts	No
Fish	No	Pistachio nuts	No
Lupin	No	Walnuts	No
Milk	Yes	Peanuts	No
Molluscs	No	Sesame Seeds	No
		Soybeans	No
		Sulphur Dioxide and Sulphites	No

SUPPLEMENTARY
INGREDIENT
INFORMATION

Palm Oil	Yes
Hydrogenated Vegetable Oil/Fat	No
GM Protein/DNA	No

ADDITIVES

Product Contains:

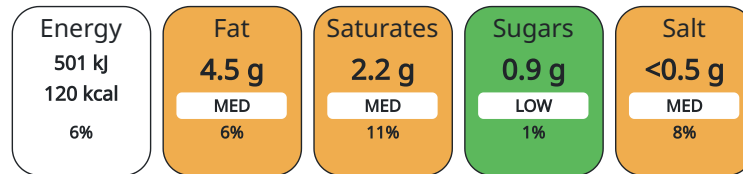
Artificial Antioxidants	No	Artificial Flavourings	No
Artificial Colours	No	Artificial Preservatives	No
Artificial Flavour Enhancers	No	Artificial Sweeteners	No

DIET SUITABILITY

Vegan Diet	No	Vegetarian Diet	Suitable for
Halal Diet	No	Kosher Diet	No

NUTRITIONAL
INFORMATION AS
SOLD

Each 100g/ml portion contains:



of your reference intake.

Typical values per 100g/ml : Energy 120kcal / 501kJ

Nutrient	per 100g	RI per 100g	per 150g serving	RI per 150g serving
Energy (kJ)	501 kJ	6%	751.5	9%
Energy (kcal)	120 kcal	6%	180	9%
Fat	4.5 g	6%	6.75 g	10%
of which Saturates	2.2 g	11%	3.3 g	17%
of which Mono-unsaturates	0 g		0 g	
of which Polyunsaturates	0 g		0 g	
Carbohydrate	16 g	6%	24 g	9%
of which Sugars	0.9 g	1%	1.35 g	2%
of which Polyols	0 g		0 g	
of which Starch	0 g		0 g	
Fibre	2.5 g		3.75 g	
Protein	2.5 g	5%	3.75 g	8%
Salt	0.5 g	8%	0.75 g	13%
Sodium	190 mg		285 mg	
Serving Size	150 g			

VITAMINS AND
MINERALS AS
SOLD

Nutrient	per 100g	RI per 100g	per 150g serving	RI per 150g serving
Vitamin A	0 µg		0 µg	
Vitamin C	0 mg		0 mg	
Folate/Folic Acid	0 µg		0 µg	
Calcium	0 mg		0 mg	
Iron	0 mg		0 mg	
Zinc	0 mg		0 mg	

SUPPLEMENTARY
NUTRITIONAL
INFORMATION

Cholesterol per 100 g/ml (UK/FR)	0 g
Trans Fats per 100 g/ml	0 g
Fat Percentage in Dry Matter per 100 g/ml	0 %
Non Milk Extrinsic Sugars per 100 g/ml	0 g

HFSS (HIGH IN
FAT, SALT AND
SUGAR)

HFSS Status	No
-------------	----

HANDLING &
STORAGE
INFORMATION

Directions For Use

Microwave : 900W for 4 minutes. Oven : 25 minutes at 220°C.

Storage Instructions

Storage Instructions: *** -18°C: See best before date ** -12°C: 1 Month * -6°C: 1 Week Do Not Refreeze Once Thawed

Shelf Life from Time of Production	730 Days
------------------------------------	----------

ACCREDITATIONS/
CERTIFICATIONS/
ASSURANCE
SCHEMES
ORIGIN

BRCGS Certified

Roundtable of Sustainable Palm Oil (RSPO)

Product Country of Origin	Belgium
---------------------------	---------

Origin of the Primary Ingredient	Belgium
----------------------------------	---------

PRODUCT
CHARACTERISTICS
CONFIGURATION

Standards Testing

Case Configuration

Inner Pack Configuration

Total Quantity of Inner Components in Outer Case	4 Units
--	---------

Count per Inner Component	4
---------------------------	---

Outer Case

Is the Outer Case Splittable?	No
-------------------------------	----

PRODUCT
WEIGHTS

Inner Component

Variable Weight Consumer Item	No
-------------------------------	----

Inner Component Weight	2.5 kg
------------------------	--------

e mark	Yes
--------	-----

Outer Case

Outer Case Gross Weight	10.5 kg
-------------------------	---------

Outer Case Net Weight	10 kg
-----------------------	-------

PRODUCT
DIMENSIONS

Inner Component

Inner Component Depth	410 mm
-----------------------	--------

Inner Component Width	315 mm
-----------------------	--------

Inner Component Height	30 mm
------------------------	-------

Outer Case

Outer Case Depth	386 mm
------------------	--------

Outer Case Width	251 mm
------------------	--------

Outer Case Height	196 mm
-------------------	--------

PALLET
INFORMATION

Quantity of Cases Per Pallet Layer	12 Cases
------------------------------------	----------

Pallet Height	1.72 MTR
---------------	----------

Quantity of Layers Per Pallet	8 Layers
-------------------------------	----------

Pallet Gross Weight	929.13 kg
---------------------	-----------

Quantity of Cases Per Pallet	96 Cases
------------------------------	----------

PACKAGING

Inner Component Packaging

Type	Materials	Weight	Recycled Material %	Recyclable	Returnable	Composite
Bag	Plastic	11.79 g				

Outer Case Packaging

Type	Materials	Weight	Recycled Material %	Recyclable	Returnable	Composite
Case	Paper/Cardboard	291 g				

OTHER INFORMATION

Intrastat/Taric Code 2004.10.99

Manufacturer Comments

No comments

CONTACT INFORMATION

ADDRESS

Country Range Group
Accrington
Lancs
United Kingdom

P: (Phone) 0845 209 3777

The information on the [Erudus System](#) has been supplied by the manufacturers of the products and, whilst the owners of the Erudus System take steps to ensure the information is regularly updated, they give no warranty and no guarantee that the information is accurate. Product information and ingredients may change, please always read product labels carefully in addition to using the information provided by Erudus.

We do not accept liability for any inaccuracies or incorrect information contained on this site.
Please visit <http://www.erudus.com/terms-and-conditions> for full terms and conditions.