

Changed Feb 05, 2026 12:31

Reviewed Feb 05, 2026 09:27

Erudus ID cd998960532b4986961ebd1d16521711

Version 27.0

Status Published

This specification is published by [Erudus](#) for Country Range Group

Country Range Hash Browns 4 x 2.5 kg

Hash Browns 4x2.5kg

PRODUCT DESCRIPTION

Frozen formed and pre-fried shredded potato

Brand	Country Range Group
Label Own Label Code	12111
Product Type	Food
Product Category	Potato Products
Storage Type	Frozen
Erudus ID	cd998960532b4986961ebd1d16521711
Specification Type	Fruit and Vegetables



Inner Component GTIN	5023616399554
Outer Case GTIN	05023616399509



INGREDIENTS

Ingredient Declaration

Potato (91%), Sunflower Oil, Salt, Dextrose, Onion Powder, Emulsifier (Hydroxypropyl methyl cellulose), White Pepper.

ALLERGENS

Product Contains:

Celery/Celeriac	No	Mustard	No
Cereals Containing Gluten	No	Nuts (Tree)	No
Barley	No	Almond nuts	No
Oats	No	Brazil nuts	No
Rye	No	Cashew nuts	No
Wheat (including Spelt and Khorasan)	No	Hazelnuts	No
Crustacea	No	Macadamia (Queensland) nuts	No
Eggs	No	Pecan nuts	No
Fish	No	Pistachio nuts	No
Lupin	No	Walnuts	No
Milk	No	Peanuts	No
Molluscs	No	Sesame Seeds	No
		Soybeans	No
		Sulphur Dioxide and Sulphites	No

SUPPLEMENTARY
INGREDIENT
INFORMATION

Palm Oil	No
Hydrogenated Vegetable Oil/Fat	No
GM Protein/DNA	No

ADDITIVES

Product Contains:

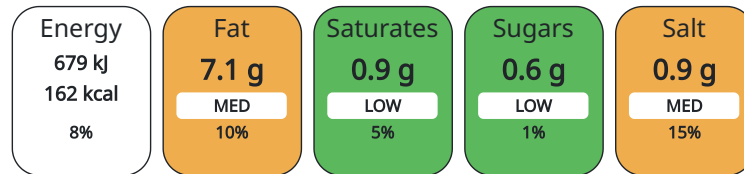
Artificial Antioxidants	No	Artificial Flavourings	No
Artificial Colours	No	Artificial Preservatives	No
Artificial Flavour Enhancers	No	Artificial Sweeteners	No

DIET SUITABILITY

Vegan Diet	Suitable for	Vegetarian Diet	Suitable for
Halal Diet	No	Kosher Diet	No

NUTRITIONAL
INFORMATION AS
SOLD

Each 100g/ml portion contains:



of your reference intake.

Typical values per 100g/ml : Energy 162kcal / 679kJ

Nutrient	per 100g	RI per 100g	per 84g serving	RI per 84g serving
Energy (kJ)	679 kJ	8%	570.36	7%
Energy (kcal)	162 kcal	8%	136.08	7%
Fat	7.1 g	10%	5.96 g	9%
of which Saturates	0.9 g	5%	0.76 g	4%
of which Mono-unsaturates	0 g		0 g	
of which Polyunsaturates	0 g		0 g	
Carbohydrate	21 g	8%	17.64 g	7%
of which Sugars	0.6 g	1%	0.5 g	1%
of which Polyols	0 g		0 g	
of which Starch	0 g		0 g	
Fibre	3 g		2.52 g	
Protein	2 g	4%	1.68 g	3%
Salt	0.88 g	15%	0.74 g	12%
Sodium	350 mg		294 mg	
Serving Size	84 g			
Serving Size Description	Two hash browns.			

Source of Nutritional Information Calculation from known/accepted datasets

VITAMINS AND MINERALS AS SOLD

Nutrient	per 100g	RI per 100g	per 84g serving	RI per 84g serving
Vitamin A	0 µg		0 µg	
Vitamin C	0 mg		0 mg	
Folate/Folic Acid	0 µg		0 µg	
Calcium	0 mg		0 mg	
Iron	0 mg		0 mg	
Zinc	0 mg		0 mg	

SUPPLEMENTARY NUTRITIONAL INFORMATION

Cholesterol per 100 g/ml (UK/FR)	0 g
Trans Fats per 100 g/ml	0 g
Fat Percentage in Dry Matter per 100 g/ml	0 %
Non Milk Extrinsic Sugars per 100 g/ml	0 g

HFSS (HIGH IN FAT, SALT AND SUGAR) HANDLING & STORAGE INFORMATION

HFSS Status	No
-------------	----

Directions For Use

For Best Results Cook From Frozen

Storage Instructions

Storage Instructions: -18°C : See best before date -12°C : 1 Month -6°C : 1 Week Do not refreeze once thawed

Shelf Life from Time of Production	730 Days
------------------------------------	----------

ACCREDITATIONS/ CERTIFICATIONS/ ASSURANCE SCHEMES ORIGIN

BRCGS Certified	
-----------------	--

Product Country of Origin	Belgium
---------------------------	---------

Origin of the Primary Ingredient	Belgium
----------------------------------	---------

PRODUCT CHARACTERISTICS CONFIGURATION

Standards Testing			
Case Configuration		Inner Pack Configuration	
Total Quantity of Inner Components in Outer Case	4 Units	Count per Inner Component	4
Is the Outer Case Splittable?	No		

PRODUCT WEIGHTS

Inner Component	
Variable Weight Consumer Item	No
Inner Component Weight	2.5 kg
e mark	Yes
Outer Case	
Outer Case Gross Weight	10.39 kg
Outer Case Net Weight	10 kg

PRODUCT DIMENSIONS

Inner Component	
Inner Component Depth	430 mm
Inner Component Width	295 mm
Inner Component Height	30 mm
Outer Case	
Outer Case Depth	386 mm
Outer Case Width	251 mm
Outer Case Height	236 mm

PALLET INFORMATION

Quantity of Cases Per Pallet Layer	12 Cases	Pallet Height	2.04 MTR
Quantity of Layers Per Pallet	8 Layers	Pallet Gross Weight	1022.2 kg
Quantity of Cases Per Pallet	96 Cases		

PACKAGING

Inner Component Packaging

Type	Materials	Weight	Recycled Material %	Recyclable	Returnable	Composite
Bag	Plastic	11.59 g				

Outer Case Packaging

Type	Materials	Weight	Recycled Material %	Recyclable	Returnable	Composite
Case	Paper/Cardboard	251 g				

OTHER INFORMATION

Intrastat/Taric Code 20041099

Manufacturer Comments

No comments

CONTACT INFORMATION

ADDRESS

Country Range Group
Accrington
Lancs
United Kingdom

P: (Phone) 0845 209 3777

The information on the [Erudus System](#) has been supplied by the manufacturers of the products and, whilst the owners of the Erudus System take steps to ensure the information is regularly updated, they give no warranty and no guarantee that the information is accurate. Product information and ingredients may change, please always read product labels carefully in addition to using the information provided by Erudus.

We do not accept liability for any inaccuracies or incorrect information contained on this site.
Please visit <http://www.erudus.com/terms-and-conditions> for full terms and conditions.