

This specification is published by [Erudus](#) for Country Range Group

972548 972565

Country Range Broccoli

Broccoli 4x

PRODUCT DESCRIPTION

Ready to cook Frozen Broccoli

Brand	Country Range Group
Label Own Label Code	12214245I
Product Type	Food
Product Category	Vegetable
Storage Type	Frozen
Erudus ID	e9e2fffa68a54940be7eec83e86cd1b8
Specification Type	Legacy



Inner Component GTIN	5023616425758
Outer Case GTIN	05023616425703



INGREDIENTS

Ingredient Declaration

Broccoli,

ALLERGENS

Product Contains:

Celery/Celeriac	No	Mustard	No
Cereals Containing Gluten	No	Nuts (Tree)	No
Barley	No	Almond nuts	No
Oats	No	Brazil nuts	No
Rye	No	Cashew nuts	No
Wheat (including Spelt and Khorasan)	No	Hazelnuts	No
Gluten content <20ppm	Yes	Macadamia (Queensland) nuts	No
Crustacea	No	Pecan nuts	No
Eggs	No	Pistachio nuts	No
Fish	No	Walnuts	No
Lupin	No	Peanuts	No
Milk	No	Sesame Seeds	No
Molluscs	No	Soybeans	No
		Sulphur Dioxide and Sulphites	No

SUPPLEMENTARY INGREDIENT INFORMATION

Palm Oil	No	Alcoholic Strength %Vol (ABV)	0 % Vol
Hydrogenated Vegetable Oil/Fat	No		
GM Protein/DNA	No		

ADDITIVES

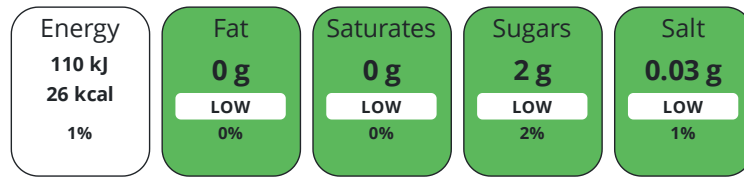
Product Contains:			
Artificial Antioxidants	No	Artificial Flavourings	No
Artificial Colours	No	Artificial Preservatives	No
Artificial Flavour Enhancers	No	Artificial Sweeteners	No

DIET
SUITABILITY

Suitable for Coeliacs	Yes	Halal Diet	Suitable for
Kosher Diet	No	Vegetarian Diet	Suitable for
Vegan Diet	Suitable for		

NUTRITIONAL
INFORMATION

Each 100g/ml portion contains:



of your reference intake.

Typical values per 100g/ml : Energy 26kcal / 110kJ

Nutrient	per 100g/ml	RI per 100g/ml	per 75g/ml serving	RI per 75g/ml serving
Energy (kJ)	110 kJ	1%	82.5 kJ	1%
Energy (kcal)	26 kcal	1%	19.5 kcal	1%
Fat	0 g	0%	-	-
of which Saturates	0 g	0%	-	-
of which Mono-unsaturates	0 g	-	-	-
of which Polyunsaturates	0 g	-	-	-
Carbohydrate	2 g	1%	1.5 g	1%
of which Sugars	2 g	2%	1.5 g	2%
of which Polyols	0 g	-	-	-
of which Starch	0 g	-	-	-
Fibre	3.1 g	-	2.3 g	-
Protein	3 g	6%	2.3 g	5%
Salt	0.03 g	1%	-	-
Sodium	10 mg	-	7.5 mg	-

Serving Size 75 g

VITAMINS AND
MINERALS

Nutrient	per 100g/ml	RI per 100g/ml	per 75g/ml serving	RI per 75g/ml serving
Vitamin A	164 µg	21%	123 µg	15%
Vitamin C	110 mg	138%	82.5 mg	103%
Folate/Folic Acid	0 µg	0%	-	-
Calcium	43 mg	5%	32.3 mg	4%
Iron	0.7 mg	5%	0.5 mg	4%
Zinc	0.6 mg	6%	0.5 mg	5%

SUPPLEMENTARY
NUTRITIONAL
INFORMATION

Cholesterol per 100 g/ml (UK/FR)	0 g
Trans Fats per 100 g/ml	0 g
Fat Percentage in Dry Matter per 100 g/ml	0.1 %
Non Milk Extrinsic Sugars per 100 g/ml	0 g

HFSS (HIGH IN FAT, SALT AND SUGAR) HANDLING & STORAGE INFORMATION

HFSS Status No

Directions For Use

For best results cook from frozen. Do not eat raw.

Storage Instructions

*1 week ** 1 month *** see best before **** see best before. To be stored at -18°C or colder. Ice making compartment: 3 days. Refrigerator: 24 hours. Cook on day of purchase if not kept frozen. Do not re-freeze after thawing. Do not eat raw.

Shelf Life from Time of Production 547 Days

ACCREDITATIONS/ CERTIFICATIONS/ ASSURANCE SCHEMES ORIGIN

BRCGS Certified

School Approved (The Requirement for School Food Regulation 2014)

Product Country of Origin/Place of Provenance Portugal

PRODUCT CHARACTERISTICS

Standards Testing

Do you undertake trend analysis of microbiological results? No

Is shelf life testing undertaken? No

CONFIGURATION

Case Configuration

Inner Pack Configuration

Total Quantity of Inner Components in Outer Case 4 Units

Is the Outer Case Splittable? Yes

PRODUCT WEIGHTS

Inner Component

Variable Weight Consumer Item No

Net Drained Weight 2.5 kg

Weight/Volume

4 x 2.5 kg

Outer Case

Outer Case Gross Weight 10.38 kg

Outer Case Net Weight 10 kg

PRODUCT DIMENSIONS

Inner Component

Inner Component Depth 530 mm

Inner Component Width 300 mm

Inner Component Height 50 mm

Outer Case

Outer Case Depth 383 mm

Outer Case Width 248 mm

Outer Case Height 310 mm

PALLET INFORMATION

Quantity of Cases Per Pallet Layer 12 Cases

Pallet Height 2 MTR

Quantity of Layers Per Pallet 6 Layers

Pallet Gross Weight 906 kg

Quantity of Cases Per Pallet 72 Cases

PACKAGING

Inner Component Packaging

Type	Materials	Weight	Recycled Plastic %	Recyclable	Returnable	Composite
Foil	Plastic	12 g	0.00 %			

Outer Case Packaging

Type	Materials	Weight	Recycled Plastic %	Recyclable	Returnable	Composite
Case	Paper/Cardboard	314.8 g	- %			
Case	Other	1.1 g	- %			

Transport Packaging

Type	Materials	Weight	Recycled Plastic %	Recyclable	Returnable	Composite
Other	Plastic	49 g	0.00 %		Yes	
Other	Paper/Cardboard	314.8 g	- %		Yes	

OTHER INFORMATION

Intrastat/Taric Code	07108095	Identification/Health Marks	N/A
-----------------------------	----------	------------------------------------	-----

Manufacturer Comments

Consumer Info and Meat Species sheets updated

CONTACT INFORMATION

ADDRESS

Country Range Group
Accrington
Lancs
United Kingdom

P: (Phone) 0845 209 3777

The information on the [Erudus System](#) has been supplied by the manufacturers of the products and, whilst the owners of the Erudus System take steps to ensure the information is regularly updated, they give no warranty and no guarantee that the information is accurate. Product information and ingredients may change, please always read product labels carefully in addition to using the information provided by Erudus.

We do not accept liability for any inaccuracies or incorrect information contained on this site. Please visit <http://www.erudus.com/terms-and-conditions> for full terms and conditions.