

Changed Aug 21, 2025 14:16

Reviewed Aug 21, 2025 14:16

Erudus ID db36450efe864f65a44db42c79cc7dd0

Version 6.0

Status Published

Daloon Vegetable Samosa (4 x (15x70g))

Daloon Vegetable Samosa 60x70g

PRODUCT DESCRIPTION

Pastry triangles filled with lightly spiced vegetables

| | |
|---------------------------|----------------------------------|
| Manufacturer Product Code | 151660 |
| Product Type | Food |
| Product Category | Prepared Vegetables |
| Storage Type | Frozen |
| Erudus ID | db36450efe864f65a44db42c79cc7dd0 |
| Specification Type | Fruit and Vegetables |



Outer Case GTIN 0871055551668



INGREDIENTS

Ingredient Declaration

Vegetables (49%) (Potatoes, Onions, Peas, Carrots), **Wheat** Flour, Water, Rapeseed Oil, Cornflour, Spices (Coriander, Cumin, Cayenne Pepper, Fennel, Ginger, Dill, Clove), Sugar, Salt, Tomato Purée, Stabiliser (Methyl Cellulose), Chilli Powder, Concentrated Lemon Juice, Turmeric, Black Onion Seed, Rice Starch, Coriander

Ingredient Statements

For allergens including cereals containing gluten, see ingredients in bold.

ALLERGENS

Product Contains:

| | | | |
|---|-----|--------------------------------------|----|
| Celery/Celeriac | No | Mustard | No |
| Cereals Containing Gluten | Yes | Nuts (Tree) | No |
| Barley | No | Almond nuts | No |
| Oats | No | Brazil nuts | No |
| Rye | No | Cashew nuts | No |
| Wheat (including Spelt and Khorasan) | Yes | Hazelnuts | No |
| Crustacea | No | Macadamia (Queensland) nuts | No |
| Eggs | No | Pecan nuts | No |
| Fish | No | Pistachio nuts | No |
| Lupin | No | Walnuts | No |
| Milk | No | Peanuts | No |
| Molluscs | No | Sesame Seeds | No |
| | | Soybeans | No |
| | | Sulphur Dioxide and Sulphites | No |

Additional Allergen Information

For allergens including cereals containing gluten, see ingredients in CAPITALS

SUPPLEMENTARY
INGREDIENT
INFORMATION

| | |
|--------------------------------|----|
| Palm Oil | No |
| Hydrogenated Vegetable Oil/Fat | No |
| GM Protein/DNA | No |

ADDITIVES

Product Contains:

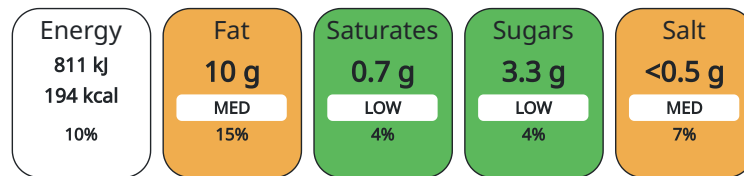
| | | | |
|------------------------------|----|--------------------------|----|
| Artificial Antioxidants | No | Artificial Flavourings | No |
| Artificial Colours | No | Artificial Preservatives | No |
| Artificial Flavour Enhancers | No | Artificial Sweeteners | No |

DIET SUITABILITY

| | | | |
|------------|--------------|-----------------|--------------|
| Vegan Diet | Suitable for | Vegetarian Diet | Suitable for |
| Halal Diet | No | Kosher Diet | No |

NUTRITIONAL
INFORMATION AS
SOLD

Each 100g/ml portion contains:



of your reference intake.

Typical values per 100g/ml : Energy 194kcal / 811kJ

| Nutrient | per 100g | RI per 100g | per 100g serving | RI per 100g serving |
|--------------------|----------|-------------|------------------|---------------------|
| Energy (kJ) | 811 kJ | 10% | 811 | 10% |
| Energy (kcal) | 194 kcal | 10% | 194 | 10% |
| Fat | 10.2 g | 15% | 10.2 g | 15% |
| of which Saturates | 0.7 g | 4% | 0.7 g | 4% |
| Carbohydrate | 21.3 g | 8% | 21.3 g | 8% |
| of which Sugars | 3.3 g | 4% | 3.3 g | 4% |
| Fibre | 2.6 g | | 2.6 g | |
| Protein | 3 g | 6% | 3 g | 6% |
| Salt | 0.4 g | 7% | 0.4 g | 7% |
| Sodium | 160 mg | | 160 mg | |

Serving Size 100 g

HANDLING &
STORAGE
INFORMATION

Directions For Use

Oven: Preheat oven to 190 °C. Place on a baking tray and cook for approximately 24 minutes. Deep Fry: in hot oil at 180°C for approx. 10 minutes.

Storage Instructions

18°C or colder. This product will keep until the "Best before" date marked only if stored at - 18°C or colder. It must be consumed within the following time limits from purchase:

Shelf Life from Time of Production 548 Days

ACCREDITATIONS/
CERTIFICATIONS/
ASSURANCE
SCHEMES
ORIGIN

| | |
|----------------------------------|---------------------|
| IFS Food Standard | Other Accreditation |
| Product Country of Origin | Netherlands (the) |
| Origin of the Primary Ingredient | Netherlands (the) |

PRODUCT
CHARACTERISTICS

Standards Testing

| | | | | | | | |
|--------------------|--|--------------------|--|----------------------------|-------------------|-------------------------|------------------|
| | Do you undertake trend analysis of microbiological results? | Yes | Is shelf life testing undertaken? | Yes | | | |
| | Microbiological Standards | | | | | | |
| | Organism | Description | Frequency | Target | Maximum | Sample (g or ml) | |
| | E. Coli (cfu/g or ml) | cfu/g | Every Batch | <10 | 100 | 1 | |
| | Enterobacteriaceae (cfu/g or ml) | cfu/g | Every Batch | <100 | 100 | 1 | |
| | Staphylococcus Aureus (cfu/g or ml) | cfu/g | Every Batch | <20 | 20 | 1 | |
| | Total Viable Count (TVC) (cfu/g or ml) | cfu/g | Every Batch | =1000 | 10000 | 1 | |
| | Salmonella (cfu/g or ml) | | Monthly | =0 | 0 | 25 | |
| | Bacillus Cereus (cfu/g or ml) | | Every Batch | <100 | 100000 | 1 | |
| | Listeria SPP (cfu/g or ml) | | Every Batch | <100 | 100 | 1 | |
| CONFIGURATION | Case Configuration | | Inner Pack Configuration | | | | |
| | Total Quantity of Inner Components in Outer Case | 60 Units | | | | | |
| | Is the Outer Case Splittable? | No | | | | | |
| PRODUCT WEIGHTS | Inner Component | | | | | | |
| | Variable Weight Consumer Item | No | | | | | |
| | Inner Component Weight | 70 g | | | | | |
| | Outer Case | | | | | | |
| | Outer Case Gross Weight | 4.6 kg | | | | | |
| | Outer Case Net Weight | 4.2 kg | | | | | |
| PRODUCT DIMENSIONS | Inner Component | | | | | | |
| | Inner Component Depth | 283 mm | | | | | |
| | Inner Component Width | 134 mm | | | | | |
| | Inner Component Height | 81 mm | | | | | |
| | Outer Case | | | | | | |
| | Outer Case Depth | 582 mm | | | | | |
| | Outer Case Width | 146 mm | | | | | |
| | Outer Case Height | 181 mm | | | | | |
| PALLET INFORMATION | Quantity of Cases Per Pallet Layer | 12 Cases | Pallet Type | Euro Pallet | | | |
| | Quantity of Layers Per Pallet | 9 Layers | Pallet Height | 1.37 MTR | | | |
| | Quantity of Cases Per Pallet | 108 Cases | Pallet Gross Weight | 432 kg | | | |
| PACKAGING | Inner Component Packaging | | | | | | |
| | Type | Materials | Weight | Recycled Material % | Recyclable | Returnable | Composite |
| | Carton | Paper/Cardboard | 240 g | | | | |
| | Outer Case Packaging | | | | | | |
| | Type | Materials | Weight | Recycled Material % | Recyclable | Returnable | Composite |
| | Case | Paper/Cardboard | 163 g | | | | |
| OTHER INFORMATION | Intrastat/Taric Code | 1905908000 | | | | | |
| | Commodity Code | 1905908000 | | | | | |

CONTACT
INFORMATION

Address

The Foodfellas
6-9 The Square
Stockley Park
UB11 1FW
East Uxbridge
Middx
England

technical@thefoodfellas.co.uk
+44 204 526 6777

Commercial

Account Manager
sales@thefoodfellas.co.uk
0204 526 6777
National Account Manager

The information on the [Erudus System](#) has been supplied by the manufacturers of the products and, whilst the owners of the Erudus System take steps to ensure the information is regularly updated, they give no warranty and no guarantee that the information is accurate. Product information and ingredients may change, please always read product labels carefully in addition to using the information provided by Erudus.

We do not accept liability for any inaccuracies or incorrect information contained on this site.
Please visit <http://www.erudus.com/terms-and-conditions> for full terms and conditions.