

Changed Sep 16, 2025 13:52

Reviewed Sep 16, 2025 13:52

Erudus ID c56c2a752797465289b53019e745e8e6

Version 5.0

Status Published

Darta Fine Whole Green Beans 4 x 2.5 kg

Fine Whole Green Beans 4x2500g

PRODUCT DESCRIPTION

Darta Fine Whole Green Beans

Brand	Darta
Manufacturer Product Code	08714299 - S0871042099I
Product Type	Food
Product Category	Vegetables - Frozen
Storage Type	Frozen
Erudus ID	c56c2a752797465289b53019e745e8e6
Specification Type	Fruit and Vegetables



Inner Component GTIN 5413408102033

Outer Case GTIN 5413408420878



INGREDIENTS

Ingredient Declaration

Beans (100%)

ALLERGENS

Product Contains:

Celery/Celeriac	No	Mustard	No
Cereals Containing Gluten	No	Nuts (Tree)	No
Barley	No	Almond nuts	No
Oats	No	Brazil nuts	No
Rye	No	Cashew nuts	No
Wheat (including Spelt and Khorasan)	No	Hazelnuts	No
Crustacea	No	Macadamia (Queensland) nuts	No
Eggs	No	Pecan nuts	No
Fish	No	Pistachio nuts	No
Lupin	No	Walnuts	No
Milk	No	Peanuts	No
Molluscs	No	Sesame Seeds	No
		Soybeans	No
		Sulphur Dioxide and Sulphites	No

SUPPLEMENTARY INGREDIENT INFORMATION

Palm Oil	No
Hydrogenated Vegetable Oil/Fat	No
GM Protein/DNA	No

ADDITIVES

Product Contains:

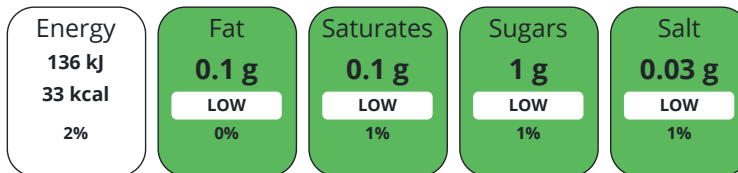
Artificial Antioxidants	No	Artificial Flavourings	No
Artificial Colours	No	Artificial Preservatives	No
Artificial Flavour Enhancers	No	Artificial Sweeteners	No

DIET SUITABILITY

Vegan Diet	Suitable for	Vegetarian Diet	Suitable for
Halal Diet	Certified	Kosher Diet	Certified

NUTRITIONAL INFORMATION AS SOLD

Each 100g/ml portion contains:



of your reference intake.

Typical values per 100g/ml : Energy 33kcal / 136kJ

Nutrient	per 100g	RI per 100g	per 100g serving	RI per 100g serving
Energy (kJ)	136 kJ	2%	136	2%
Energy (kcal)	33 kcal	2%	33	2%
Fat	0.1 g	0%	0.1 g	0%
of which Saturates	0.1 g	1%	0.1 g	1%
of which Mono-unsaturates	0 g		0 g	
of which Polyunsaturates	0 g		0 g	
Carbohydrate	3.7 g	1%	3.7 g	1%
of which Sugars	1 g	1%	1 g	1%
of which Starch	2.5 g		2.5 g	
Fibre	4.4 g		4.4 g	
Protein	2 g	4%	2 g	4%
Salt	0.03 g	1%	0.03 g	1%
Sodium	10 mg		10 mg	
Serving Size	100 g			

VITAMINS AND MINERALS AS SOLD

Nutrient	per 100g	RI per 100g	per 100g serving	RI per 100g serving
Vitamin A	0.25 µg	0%	0.25 µg	0%
Vitamin C	8 mg	10%	8 mg	10%
Calcium	43 mg	5%	43 mg	5%
Iron	0.7 mg	5%	0.7 mg	5%
Zinc	0.3 mg	3%	0.3 mg	3%

SUPPLEMENTARY NUTRITIONAL INFORMATION

Cholesterol per 100 g/ml (UK/FR)	0 g
Fat Percentage in Dry Matter per 100 g/ml	0 %

HFSS (HIGH IN FAT, SALT AND SUGAR)

HFSS Status	No
--------------------	----

HANDLING &
STORAGE
INFORMATION

Directions For Use

Best cooked from frozen Add the deepfrozen vegetables to boiling water and cook over a gentle heat for approx. 6 - 8 min. Season to taste The vegetables are also suitable for preparation in micro-wave

Storage Instructions

refrigerator: 24 hours freezer compartment: 48 hours freezer: -18°C: see expiry date

Shelf Life from Time of Production 912 Days

ACCREDITATIONS/
CERTIFICATIONS/
ASSURANCE
SCHEMES
ORIGIN

BRCGS Certified

IFS Food Standard

ISO 14001 (Environmental Management)

Product Country of Origin Belgium

Additional Origin Details

n/a

Origin of the Primary Ingredient Belgium

PRODUCT
CHARACTERISTICS

Standards Testing

Do you undertake trend analysis of microbiological results? Yes

Is shelf life testing undertaken? Yes

Microbiological Standards

Organism	Description	Frequency	Target	Maximum	Sample (g or ml)
Coliforms (cfu/g or ml)		Every Batch	<500	1000	1
E. Coli (cfu/g or ml)		Every Batch	<10	100	1
Listeria Monocytogenes (cfu/g or ml)		Occasionally	<1	100	1
Total Viable Count (TVC) (cfu/g or ml)		Every Batch	<50000	100000	1
Salmonella (cfu/g or ml)		Occasionally	<0	0	25
Yeast (cfu/g or ml)		Occasionally	<500	1000	1
Moulds (cfu/g or ml)		Occasionally	<500	1000	1

CONFIGURATION

Case Configuration

Inner Pack Configuration

Total Quantity of Inner Components in Outer Case 4 Units

Count per Inner Component 1

Is the Outer Case Splittable? Yes

PRODUCT
WEIGHTS

Inner Component

Variable Weight Consumer Item No

Inner Component Weight 2500 g

Outer Case

Outer Case Gross Weight 10.33 kg

Outer Case Net Weight 10 kg

PRODUCT
DIMENSIONS

Inner Component

Inner Component Depth 480 mm

Inner Component Width 300 mm

Inner Component Height 55 mm

Outer Case

Outer Case Depth 368 mm

Outer Case Width 235 mm

Outer Case Height 251 mm

PALLET INFORMATION

Quantity of Cases Per Pallet Layer	12 Cases	Pallet Height	1.67 MTR
Quantity of Layers Per Pallet	6 Layers	Pallet Gross Weight	769 kg
Quantity of Cases Per Pallet	72 Cases		

PACKAGING

Inner Component Packaging

Type	Materials	Weight	Recycled Plastic %	Recyclable	Returnable	Composite
Bag	Plastic	14.99 g	0.00 %			

Outer Case Packaging

Type	Materials	Weight	Recycled Plastic %	Recyclable	Returnable	Composite
Case	Plastic	1.1 g	0.00 %			
Case	Paper/Cardboard	259 g	- %			

Transport Packaging

Type	Materials	Weight	Recycled Plastic %	Recyclable	Returnable	Composite
Other	Plastic	160 g	0.00 %		Yes	
Other	Paper/Cardboard	5.7 g	- %		Yes	
Other	Wood	25000 g	- %		Yes	

SAFETY & WARNINGS

OTHER INFORMATION

Intrastat/Taric Code	7102200
-----------------------------	---------

Manufacturer Comments

n/a

CONTACT INFORMATION

Address

D'Arta S.A.
 Pittemsestraat 58a
 Ardoonie
 8850
 Belgium

P: (Phone) 01273 704865

The information on the [Erudus System](#) has been supplied by the manufacturers of the products and, whilst the owners of the Erudus System take steps to ensure the information is regularly updated, they give no warranty and no guarantee that the information is accurate. Product information and ingredients may change, please always read product labels carefully in addition to using the information provided by Erudus.

We do not accept liability for any inaccuracies or incorrect information contained on this site.
 Please visit <http://www.erudus.com/terms-and-conditions> for full terms and conditions.