

Changed Sep 16, 2025 13:49

Reviewed Sep 16, 2025 13:49

Erudus ID 9673f7cade474bed909bda308b10c5db

Version 5.0

Status Published

Darta Savoy Cabbage 4 x 2.5 kg

Savoy Cabbage 4x2500g

PRODUCT DESCRIPTION

Darta Savoy Cabbage

Brand	Darta
Manufacturer Product Code	19314299 - S1931042099I
Product Type	Food
Product Category	Vegetables - Frozen
Storage Type	Frozen
Erudus ID	9673f7cade474bed909bda308b10c5db
Specification Type	Fruit and Vegetables



Inner Component GTIN	5413408104099
Outer Case GTIN	5413408421936



INGREDIENTS

Ingredient Declaration

Savoy cabbage (100%)

ALLERGENS

Product Contains:

Celery/Celeriac	No	Mustard	No
Cereals Containing Gluten	No	Nuts (Tree)	No
Barley	No	Almond nuts	No
Oats	No	Brazil nuts	No
Rye	No	Cashew nuts	No
Wheat (including Spelt and Khorasan)	No	Hazelnuts	No
Crustacea	No	Macadamia (Queensland) nuts	No
Eggs	No	Pecan nuts	No
Fish	No	Pistachio nuts	No
Lupin	No	Walnuts	No
Milk	No	Peanuts	No
Molluscs	No	Sesame Seeds	No
		Soybeans	No
		Sulphur Dioxide and Sulphites	No

SUPPLEMENTARY INGREDIENT INFORMATION

Palm Oil	No
Hydrogenated Vegetable Oil/Fat	No
GM Protein/DNA	No

ADDITIVES

Product Contains:

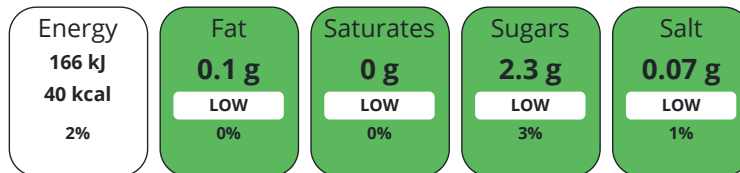
Artificial Antioxidants	No	Artificial Flavourings	No
Artificial Colours	No	Artificial Preservatives	No
Artificial Flavour Enhancers	No	Artificial Sweeteners	No

DIET SUITABILITY

Vegan Diet	Suitable for	Vegetarian Diet	Suitable for
Halal Diet	Suitable for	Kosher Diet	No

NUTRITIONAL INFORMATION AS SOLD

Each 100g/ml portion contains:



of your reference intake.

Typical values per 100g/ml : Energy 40kcal / 166kj

Nutrient	per 100g	RI per 100g	per 80g serving	RI per 80g serving
Energy (kJ)	166 kJ	2%	132.8	2%
Energy (kcal)	40 kcal	2%	32	2%
Fat	0.1 g	0%	0.08 g	0%
of which Saturates	0 g		0 g	
of which Mono-unsaturates	0 g		0 g	
of which Polyunsaturates	0 g		0 g	
Carbohydrate	6.1 g	2%	4.88 g	2%
of which Sugars	2.3 g	3%	1.84 g	2%
Fibre	3.1 g		2.48 g	
Protein	2 g	4%	1.6 g	3%
Salt	0.07 g	1%	0.06 g	1%
Sodium	30 mg		24 mg	
Serving Size	80 g			

VITAMINS AND MINERALS AS SOLD

Nutrient	per 100g	RI per 100g	per 80g serving	RI per 80g serving
Vitamin C	31 mg	39%	24.8 mg	31%
Calcium	35 mg	4%	28 mg	4%
Iron	0.4 mg	3%	0.32 mg	2%
Zinc	0.3 mg	3%	0.24 mg	2%

SUPPLEMENTARY NUTRITIONAL INFORMATION

Cholesterol per 100 g/ml (UK/FR)	0 g
Fat Percentage in Dry Matter per 100 g/ml	0 %
Non Milk Extrinsic Sugars per 100 g/ml	0 g

HFSS (HIGH IN FAT, SALT AND SUGAR)

HFSS Status	No
--------------------	----

HANDLING &
STORAGE
INFORMATION

Directions For Use

Best cooked from frozen Add the deepfrozen vegetables to boiling water and cook over a gentle heat for approx. 6 - 8 min. Season to taste The vegetables are also suitable for preparation in micro-wave

Storage Instructions

refrigerator: 24 hours freezer compartment: 48 hours freezer: -18°C: see expiry date

Shelf Life from Time of Production 912 Days

ACCREDITATIONS/
CERTIFICATIONS/
ASSURANCE
SCHEMES
ORIGIN

BRCGS Certified

IFS Food Standard

ISO 14001 (Environmental Management)

Product Country of Origin Belgium

Additional Origin Details

n/a

Origin of the Primary Ingredient Belgium

PRODUCT
CHARACTERISTICS

Standards Testing

Do you undertake trend analysis of microbiological results? Yes

Is shelf life testing undertaken? Yes

Microbiological Standards

Organism	Description	Frequency	Target	Maximum	Sample (g or ml)
Coliforms (cfu/g or ml)		Every Batch	<5000	10000	1
E. Coli (cfu/g or ml)		Every Batch	<10	100	1
Listeria Monocytogenes (cfu/g or ml)		Occasionally	<1	100	1
Total Viable Count (TVC) (cfu/g or ml)		Every Batch	<500000	1000000	1
Salmonella (cfu/g or ml)		Occasionally	<0	0	25
Yeast (cfu/g or ml)		Occasionally	<500	1000	1
Moulds (cfu/g or ml)		Occasionally	<500	1000	1

CONFIGURATION

Case Configuration

Inner Pack Configuration

Total Quantity of Inner Components in Outer Case 4 Units

Is the Outer Case Splittable? Yes

PRODUCT
WEIGHTS

Inner Component

Variable Weight Consumer Item No

Inner Component Weight 2500 g

Outer Case

Outer Case Gross Weight 10.41 kg

Outer Case Net Weight 10 kg

PRODUCT
DIMENSIONS

Inner Component

Inner Component Depth 520 mm

Inner Component Width 300 mm

Inner Component Height 55 mm

Outer Case

Outer Case Depth 380 mm

Outer Case Width 245 mm

Outer Case Height 315 mm

PALLET INFORMATION

Quantity of Cases Per Pallet Layer	12 Cases	Pallet Height	2.1 MTR
Quantity of Layers Per Pallet	6 Layers	Pallet Gross Weight	774.5 kg
Quantity of Cases Per Pallet	72 Cases		

PACKAGING

Inner Component Packaging

Type	Materials	Weight	Recycled Plastic %	Recyclable	Returnable	Composite
Bag	Plastic	16.96 g	0.00 %			

Outer Case Packaging

Type	Materials	Weight	Recycled Plastic %	Recyclable	Returnable	Composite
Case	Plastic	1.1 g	0.00 %			
Case	Paper/Cardboard	339 g	- %			

Transport Packaging

Type	Materials	Weight	Recycled Plastic %	Recyclable	Returnable	Composite
Other	Plastic	160 g	0.00 %		Yes	
Other	Paper/Cardboard	5.7 g	- %		Yes	
Other	Wood	25000 g	- %		Yes	

SAFETY & WARNINGS

OTHER INFORMATION

Intrastat/Taric Code 7108095

Manufacturer Comments

n/a

CONTACT INFORMATION

Address

D'Arta S.A.
 Pittemsestraat 58a
 Ardooie
 8850
 Belgium

P: (Phone) 01273 704865

The information on the [Erudus System](#) has been supplied by the manufacturers of the products and, whilst the owners of the Erudus System take steps to ensure the information is regularly updated, they give no warranty and no guarantee that the information is accurate. Product information and ingredients may change, please always read product labels carefully in addition to using the information provided by Erudus.

We do not accept liability for any inaccuracies or incorrect information contained on this site.
 Please visit <http://www.erudus.com/terms-and-conditions> for full terms and conditions.