

Changed Aug 22, 2025 09:01

Reviewed Aug 22, 2025 09:01

Erudus ID 0a72f897c1034cf2b029bc90b388ec79

Version 2.0

Status Published

Lutosa Foodservice Skin-on Wedges Potatoes

Quart Peau Wedges Foodserv To 4x2.5kg

PRODUCT DESCRIPTION

Delicious skin-on wedges potatoes cut from selected potatoes.

Brand	Lutosa UK
Manufacturer Product Code	1516416-1V
Product Type	Food
Product Category	Potato Products
Storage Type	Frozen
Erudus ID	0a72f897c1034cf2b029bc90b388ec79
Specification Type	Fruit and Vegetables

Inner Component GTIN	5410376611857
Outer Case GTIN	15410376611113



INGREDIENTS

Ingredient Declaration

Potatoes (97%), Sunflower oil

ALLERGENS

Product Contains:

Celery/Celeriac	No	Mustard	No
Cereals Containing Gluten	No	Nuts (Tree)	No
Barley	No	Almond nuts	No
Oats	No	Brazil nuts	No
Rye	No	Cashew nuts	No
Wheat (including Spelt and Khorasan)	No	Hazelnuts	No
Crustacea	No	Macadamia (Queensland) nuts	No
Eggs	No	Pecan nuts	No
Fish	No	Pistachio nuts	No
Lupin	No	Walnuts	No
Milk	No	Peanuts	No
Molluscs	No	Sesame Seeds	No
		Soybeans	No
		Sulphur Dioxide and Sulphites	No

FREE FROM CLAIMS

Gluten-Free	Yes
-------------	-----

SUPPLEMENTARY INGREDIENT INFORMATION

Palm Oil	No
Hydrogenated Vegetable Oil/Fat	No
GM Protein/DNA	No

ADDITIVES

Product Contains:

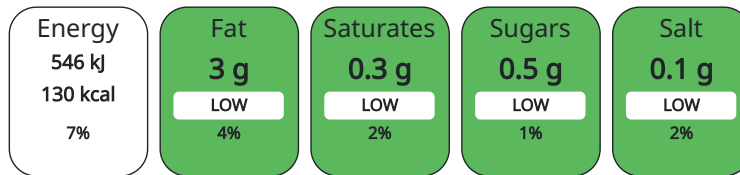
Artificial Antioxidants	No	Artificial Flavourings	No
Artificial Colours	No	Artificial Preservatives	No
Artificial Flavour Enhancers	No	Artificial Sweeteners	No

DIET SUITABILITY

Vegan Diet	Suitable for	Vegetarian Diet	Suitable for
Halal Diet	Suitable for	Kosher Diet	No

NUTRITIONAL INFORMATION AS SOLD

Each 100g/ml portion contains:



of your reference intake.

Typical values per 100g/ml : Energy 130kcal / 546kJ

Nutrient	per 100g	RI per 100g	per 100g serving	RI per 100g serving
Energy (kJ)	546 kJ	7%	546	7%
Energy (kcal)	130 kcal	7%	130	7%
Fat	3 g	4%	3 g	4%
of which Saturates	0.3 g	2%	0.3 g	2%
Carbohydrate	22 g	8%	22 g	8%
of which Sugars	0.5 g	1%	0.5 g	1%
Fibre	2.5 g		2.5 g	
Protein	2.4 g	5%	2.4 g	5%
Salt	0.1 g	2%	0.1 g	2%

Serving Size 100 g

SUPPLEMENTARY NUTRITIONAL INFORMATION

HANDLING & STORAGE INFORMATION

Directions For Use

In the fryer: Fry small quantities of the frozen Skin-on Wedges in hot fat or oil at 175°C/ 350° F during 4 to 5 minutes. In the oven (*): Pre-heat oven at 200°C. Place the Skin-on Wedges on an oiled baking tray and bake during 10-20 minutes. Turn wedges regularly during cooking. In the frying pan: Heat some oil in a frying pan. Place the frozen Skin-on Wedges in the pan and fry them on a medium heat for 15 minutes while stirring from time to time. (*) Cooking time can vary slightly according to the type of your oven.

Storage Instructions

1°) Transport - storage Always at a temperature of - 18°C. 2°) Storage (in accordance with the instructions on the packaging): In refrigerator (+2°C*+4°C): 2 days In star-marked frozen food compartment of a refrigerator * (- 6°C): 1 week; or in a freezer *** (- 18°C): several months, without going past the best before date. Do not refreeze once thawed.

Shelf Life from Time of Production 730 Days

ACCREDITATIONS/ CERTIFICATIONS/ ASSURANCE SCHEMES

BRCGS Certified
Roundtable of Sustainable Palm Oil (RSPO)

IFS Food Standard
Other Accreditation

ORIGIN	Product Country of Origin	Belgium					
	Additional Origin Details	n/a					
	Origin of the Primary Ingredient	Belgium, France, Germany, Netherlands (the)					
PRODUCT CHARACTERISTICS	Standards Testing						
	Do you undertake trend analysis of microbiological results?	No	Is shelf life testing undertaken?		No		
	Microbiological Standards						
	Organism	Description	Frequency	Target	Maximum	Sample (g or ml)	
	Bacillus Cereus (cfu/g or ml)		Daily	<100	1000	1	
	Coliforms (cfu/g or ml)		Daily	<100	1000	1	
	E. Coli (cfu/g or ml)		Daily	<10	100	1	
	Listeria Monocytogenes (cfu/g or ml)		Daily	<10	100	1	
	Staphylococcus Aureus (cfu/g or ml)		Daily	<10	100	1	
	Yeast (cfu/g or ml)		Daily	<100	1000	1	
Moulds (cfu/g or ml)		Daily	<100	1000	1		
Total Viable Count (TVC) (cfu/g or ml)		Daily	<10000	100000	1		
Salmonella (cfu/g or ml)		Monthly	<0	0	25		
CONFIGURATION	Case Configuration	Inner Pack Configuration					
	Total Quantity of Inner Components in Outer Case	4 Units					
	Is the Outer Case Splittable?	Yes					
PRODUCT WEIGHTS	Inner Component						
	Variable Weight Consumer Item	Yes					
	Outer Case						
	Outer Case Gross Weight	10.41 kg					
	Outer Case Net Weight	10 kg					
PRODUCT DIMENSIONS	Inner Component						
	Inner Component Depth	310 mm					
	Inner Component Width	50 mm					
	Inner Component Height	400 mm					
	Outer Case						
	Outer Case Depth	380 mm					
	Outer Case Width	245 mm					
	Outer Case Height	200 mm					
PALLET INFORMATION	Quantity of Cases Per Pallet Layer	9 Cases	Pallet Height		0 MTR		
	Quantity of Layers Per Pallet	8 Layers					
	Quantity of Cases Per Pallet	72 Cases					
PACKAGING	Inner Component Packaging						
	Type	Materials	Weight	Recycled Plastic %	Recyclable	Returnable	Composite
	Paper/Polyethylene	Plastic	8.48 g	- %			

Outer Case Packaging

Type	Materials	Weight	Recycled Plastic %	Recyclable	Returnable	Composite
Paper/Polyethylene	Paper/Cardboard	371.2 g	- %			

Transport Packaging

Type	Materials	Weight	Recycled Plastic %	Recyclable	Returnable	Composite
Other	Wood	30 g	- %			

SAFETY & WARNINGS

OTHER INFORMATION

Manufacturer Comments

as above

CONTACT INFORMATION

Address

Lutosa UK

Magellan House, Compass Point Business Park

Stocksbridge way

St Ives

PE27 5JL

England

P: (Phone) 01480465656

The information on the [Erudus System](#) has been supplied by the manufacturers of the products and, whilst the owners of the Erudus System take steps to ensure the information is regularly updated, they give no warranty and no guarantee that the information is accurate. Product information and ingredients may change, please always read product labels carefully in addition to using the information provided by Erudus.

We do not accept liability for any inaccuracies or incorrect information contained on this site.
Please visit <http://www.erudus.com/terms-and-conditions> for full terms and conditions.