

Changed Oct 15, 2024 12:38

Reviewed Oct 15, 2024 12:38

Erudus ID 1435f0c5970241bab2992bbd570d3731

Version 2.0

988777

# Battered Cooked Chicken Breast Chunks

Battered Cooked Chicken Breast Chunks

## PRODUCT DESCRIPTION

Battered Cooked Chicken chunks packed in 1kg bags.

Brand	Seara
Manufacturer Product Code	CPE-15
Manufacturer Version Number	33
Product Type	Food
Product Category	Chicken & Turkey
Storage Type	Frozen
Erudus ID	1435f0c5970241bab2992bbd570d3731
Specification Type	Meat
Inner Component GTIN	7894904218578



## INGREDIENTS

### Ingredient Declaration

Chicken meat (63%) vegetable oils (cottonseed and, or sunflower and, or rice), fortified WHEAT flour with iron and folic acid, water, maize flour, starch, breadcrumb (WHEAT flour, salt and yeast), salt, stabiliser (E450i), raising agents (E450i, E500ii), MILK powder, dextrose, spices and thickener agent (E412).

## ALLERGENS

Product Contains:

<b>Celery/Celeriac</b>	No	<b>Mustard</b>	No
<b>Cereals Containing Gluten</b>	Yes	<b>Nuts (Tree)</b>	No
<b>Barley</b>	May Contain	<b>Almond nuts</b>	No
<b>Oats</b>	May Contain	<b>Brazil nuts</b>	No
<b>Rye</b>	May Contain	<b>Cashew nuts</b>	No
<b>Wheat (including Spelt and Khorasan)</b>	Yes	<b>Hazelnuts</b>	No
<b>Crustacea</b>	No	<b>Macadamia (Queensland) nuts</b>	No
<b>Eggs</b>	No	<b>Pecan nuts</b>	No
<b>Fish</b>	No	<b>Pistachio nuts</b>	No
<b>Lupin</b>	No	<b>Walnuts</b>	No
<b>Milk</b>	Yes	<b>Peanuts</b>	No
<b>Molluscs</b>	No	<b>Sesame Seeds</b>	No
		<b>Soybeans</b>	May Contain
		<b>Sulphur Dioxide and Sulphites</b>	No

Risk Source:

<b>Barley (Risk Source)</b>	Raw Material	<b>Oats (Risk Source)</b>	Raw Material
<b>Rye (Risk Source)</b>	Raw Material	<b>Soybeans (Risk Source)</b>	Raw Material

SUPPLEMENTARY  
INGREDIENT  
INFORMATION

<b>Palm Oil</b>	No
<b>Hydrogenated Vegetable Oil/Fat</b>	No
<b>GM Protein/DNA</b>	No

ADDITIVES

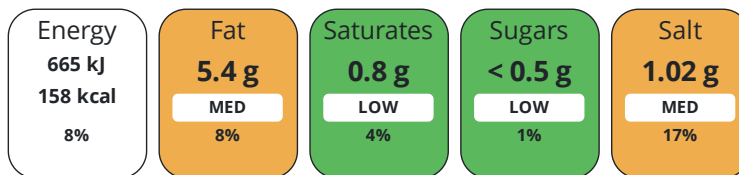
Product Contains:

<b>Artificial Antioxidants</b>	No	<b>Artificial Flavourings</b>	No
<b>Artificial Colours</b>	No	<b>Artificial Preservatives</b>	No
<b>Artificial Flavour Enhancers</b>	No	<b>Artificial Sweeteners</b>	No
<b>Halal Diet</b>	Suitable for	<b>Kosher Diet</b>	No

DIET  
SUITABILITY

NUTRITIONAL  
INFORMATION

Each 100g/ml portion contains:



of your reference intake.

Typical values per 100g/ml : Energy 158kcal / 665kJ

Nutrient	per 100g	RI per 100g	per 100g serving	RI per 100g serving
<b>Energy (kJ)</b>	665 kJ	8%	665 kJ	8%
<b>Energy (kcal)</b>	158 kcal	8%	158 kcal	8%
<b>Fat</b>	5.4 g	8%	5.4 g	8%
<b>of which Saturates</b>	0.8 g	4%	0.8 g	4%
<b>Carbohydrate</b>	14 g	5%	14 g	5%
<b>of which Sugars</b>	< 0.5 g	1%	0.5 g	1%
<b>Protein</b>	14 g	28%	14 g	28%
<b>Salt</b>	1.02 g	17%	1 g	17%
<b>Serving Size</b>	100 g			

SUPPLEMENTARY  
NUTRITIONAL  
INFORMATION

HANDLING &  
STORAGE  
INFORMATION

**Directions For Use**

Cook from frozen

**Storage Instructions**

Keep frozen

**Shelf Life from Time of Production** 545 Days

ACCREDITATIONS/  
CERTIFICATIONS/  
ASSURANCE  
SCHEMES  
ORIGIN

**BRCGS Certified**

**ISO 14001 (Environmental Management)**

**Product Country of Origin/Place of** Brazil

**Provenance**

PRODUCT  
CHARACTERISTICS

Standards Testing

**Do you undertake trend analysis of microbiological results?** Yes

**Is shelf life testing undertaken?** Yes

Microbiological Standards

Organism	Description	Frequency	Target	Maximum	Sample (g or ml)
Coliforms (cfu/g or ml)		Daily	<50	50	25
E. Coli (cfu/g or ml)		Daily	<20	20	25
Listeria Monocytogenes (cfu/g or ml)	ABSENCE	Daily	<25	0	25
Total Viable Count (TVC) (cfu/g or ml)		Daily	<5000	5000	25
Salmonella (cfu/g or ml)	ABSENCE	Daily	<25	0	25
Yeast (cfu/g or ml)		Daily	<200	200	25
Moulds (cfu/g or ml)		Daily	<200	200	25

CONFIGURATION

Case Configuration

Inner Pack Configuration

**Total Quantity of Inner Components in Outer Case** 10 Units

PRODUCT WEIGHTS

Inner Component

**Variable Weight Consumer Item** Yes  
**Net Drained Weight** 1 kg

Outer Case

**Outer Case Gross Weight** 10.76 kg  
**Outer Case Net Weight** 10 kg

PRODUCT DIMENSIONS

Inner Component

**Inner Component Depth** 340 mm  
**Inner Component Width** 270 mm  
**Inner Component Height** 7 mm

Outer Case

**Outer Case Depth** 400 mm  
**Outer Case Width** 300 mm  
**Outer Case Height** 250 mm

PALLET INFORMATION

**Quantity of Cases Per Pallet Layer** 10 Cases  
**Quantity of Layers Per Pallet** 6 Layers  
**Quantity of Cases Per Pallet** 60 Cases

**Pallet Type** UK Standard Pallet  
**Pallet Height** 1.6 MTR  
**Pallet Gross Weight** 664 kg

OTHER INFORMATION

**Commodity Code** 16023219

**Identification/Health Marks** 576

CONTACT INFORMATION

Address

Seara  
Penasul UK Limited  
2nd Floor, Building 1, Imperial Place, Maxwell Road  
Borehamwood  
Hertfordshire  
WD6 1JN  
United Kingdom

Technical Contact

Jaqueline Muniz  
Quality Assurance Specialist  
jaqueline.nogueira@seara.com.br

P: (Phone) +44 7990052050

Complaints Contact

Aline Val  
Comercial assistance  
aline.val@seara.com.br

Commercial Contact

Robert Hegarty  
Commercial manager  
robert.hegarty@seara.com.br

P: (Phone) +44 7939398359

The information on the [Erudus System](#) has been supplied by the manufacturers of the products and, whilst the owners of the Erudus System take steps to ensure the information is regularly updated, they give no warranty and no guarantee that the information is accurate. Product information and ingredients may change, please always read product labels carefully in addition to using the information provided by Erudus.

We do not accept liability for any inaccuracies or incorrect information contained on this site.  
Please visit <http://www.erudus.com/terms-and-conditions> for full terms and conditions.