

This specification is published by [Erudus](#) for Country Range Group

# Country Range Battered MSC Cod Fillets 24 x 140 - 170g

Country Range Battered Msc Cod Fillets 24 X 140 - 170g

## PRODUCT DESCRIPTION

Formed skinless boneless cod fillet pieces enrobed in a bubbly batter flash fried.

<b>Brand</b>	Country Range Group
<b>Label Own Label Code</b>	MBC05CR
<b>Product Type</b>	Food
<b>Product Category</b>	Seafood - Fish
<b>Storage Type</b>	Frozen
<b>Erudus ID</b>	706a694c9498433eb732650779a90d6d
<b>Specification Type</b>	Legacy
<b>Outer Case GTIN</b>	05023616503203



## INGREDIENTS

### Ingredient Declaration

Cod (*Gadus macrocephalus* or *Gadus morhua*) (**FISH**) (50%), **WHEAT** Flour (contains Calcium Carbonate, Iron, Niacin, Thiamin), Water, Rapeseed Oil, Salt, Maize Starch, **WHEAT** Starch, Raising Agent (Disodium Diphosphate, Sodium Carbonate, Ammonium Carbonate), Yeast Extract, Stabilier (Xanthan gum), Dextrose, Yeast.

## ALLERGENS

Product Contains:

<b>Celery/Celeriac</b>	No	<b>Mustard</b>	No
<b>Cereals Containing Gluten</b>	Yes	<b>Nuts (Tree)</b>	No
<b>Barley</b>	No	<b>Almond nuts</b>	No
<b>Oats</b>	No	<b>Brazil nuts</b>	No
<b>Rye</b>	No	<b>Cashew nuts</b>	No
<b>Wheat (including Spelt and Khorasan)</b>	Yes	<b>Hazelnuts</b>	No
<b>Gluten content &lt;20ppm</b>	No	<b>Macadamia (Queensland) nuts</b>	No
<b>Crustacea</b>	No	<b>Pecan nuts</b>	No
<b>Eggs</b>	No	<b>Pistachio nuts</b>	No
<b>Fish</b>	Yes	<b>Walnuts</b>	No
<b>Lupin</b>	No	<b>Peanuts</b>	No
<b>Milk</b>	No	<b>Sesame Seeds</b>	No
<b>Molluscs</b>	No	<b>Soybeans</b>	No
		<b>Sulphur Dioxide and Sulphites</b>	No
<b>Palm Oil</b>	No	<b>Alcoholic Strength %Vol (ABV)</b>	0 % Vol
<b>Hydrogenated Vegetable Oil/Fat</b>	No		
<b>GM Protein/DNA</b>	No		

## SUPPLEMENTARY INGREDIENT INFORMATION

## ADDITIVES

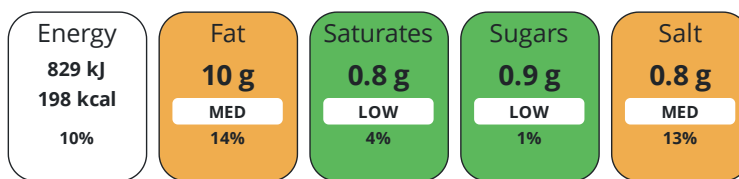
Product Contains:

DIET  
SUITABILITY

Suitable for Coeliacs	No	Halal Diet	No
Kosher Diet	No	Vegetarian Diet	No
Vegan Diet	No		

NUTRITIONAL  
INFORMATION

Each 100g/ml portion contains:



of your reference intake.

Typical values per 100g/ml : Energy 198kcal / 829kj

Nutrient	per 100g/ml	RI per 100g/ml	per 155g/ml serving	RI per 155g/ml serving
Energy (kJ)	829 kJ	10%	1285 kJ	15%
Energy (kcal)	198 kcal	10%	306.9 kcal	15%
Fat	10 g	14%	15.5 g	22%
of which Saturates	0.8 g	4%	1.2 g	6%
of which Mono-unsaturates	4.36 g		6.8 g	
of which Polyunsaturates	2.2 g		3.4 g	
Carbohydrate	18.2 g	7%	28.2 g	11%
of which Sugars	0.9 g	1%	1.4 g	2%
of which Polyols	0 g		-	
of which Starch	0 g		-	
Fibre	0.9 g		1.4 g	
Protein	8.4 g	17%	13 g	26%
Salt	0.8 g	13%	1.2 g	20%
Sodium	301 mg		466.6 mg	

Serving Size 155 g

VITAMINS AND  
MINERALS

Nutrient	per 100g/ml	RI per 100g/ml	per 155g/ml serving	RI per 155g/ml serving
Vitamin A	0 µg	0%	-	
Vitamin C	0 mg	0%	-	
Folate/Folic Acid	0 µg	0%	-	
Calcium	0 mg	0%	-	
Iron	0 mg	0%	-	
Zinc	0 mg	0%	-	

SUPPLEMENTARY  
NUTRITIONAL  
INFORMATION

Cholesterol per 100 g/ml (UK/FR)	0 g
Trans Fats per 100 g/ml	0.13 g
Fat Percentage in Dry Matter per 100 g/ml	0 %
Non Milk Extrinsic Sugars per 100 g/ml	0 g

HFSS (HIGH IN FAT, SALT AND SUGAR) HANDLING & STORAGE INFORMATION

**HFSS Status** No

**Directions For Use**

Deep fry in hot oil at 180°C for 6 - 8 minutes. Alternatively place on a baking tray in a pre-heated oven at 200°C/Gas mark 6 for approximately 18 minutes. This is a raw product and must be cooked to a minimum temperature of 75°C for 30 seconds or equivalent. MSC-C-50151

**Storage Instructions**

Keep frozen at -18°C or below Do not refreeze after thawing

**Shelf Life from Time of Production** 547 Days

ACCREDITATIONS/ CERTIFICATIONS/ ASSURANCE SCHEMES ORIGIN

**Marine Stewardship Council (MSC)**

**BRCGS Certified**

**Product Country of Origin/Place of** United Kingdom

**Provenance**

PRODUCT CHARACTERISTICS CONFIGURATION

Standards Testing

Case Configuration

Inner Pack Configuration

**Total Quantity of Inner Components in** 1 Units

**Outer Case**

**Is the Outer Case Splittable?** No

PRODUCT WEIGHTS

Inner Component

**Variable Weight Consumer Item** No

**Net Drained Weight** 0 kg

**Weight/Volume**

24 x 140 - 170g. 3.36Kg

Outer Case

**Outer Case Gross Weight** 4.26 kg

**Outer Case Net Weight** 4.08 kg

PRODUCT DIMENSIONS

Inner Component

**Inner Component Depth** 375 mm

**Inner Component Width** 700 mm

**Inner Component Height** 525 mm

Outer Case

**Outer Case Depth** 333 mm

**Outer Case Width** 250 mm

**Outer Case Height** 113 mm

PALLET INFORMATION

**Quantity of Cases Per Pallet Layer** 14 Cases

**Pallet Height** 1.73 MTR

**Quantity of Layers Per Pallet** 14 Layers

**Pallet Gross Weight** 855.6 kg

**Quantity of Cases Per Pallet** 196 Cases

PACKAGING

Inner Component Packaging

Type	Materials	Weight	Recycled Plastic %	Recyclable	Returnable	Composite
Box	Other	10 g	- %			

Outer Case Packaging

Type	Materials	Weight	Recycled Plastic %	Recyclable	Returnable	Composite
Case	Other	2 g	- %			

**Manufacturer Comments**

N/A

CONTACT  
INFORMATION

ADDRESS

Country Range Group

Accrington

Lancs

United Kingdom

P. (Phone) 0845 209 3777

The information on the [Erudus System](#) has been supplied by the manufacturers of the products and, whilst the owners of the Erudus System take steps to ensure the information is regularly updated, they give no warranty and no guarantee that the information is accurate. Product information and ingredients may change, please always read product labels carefully in addition to using the information provided by Erudus.

We do not accept liability for any inaccuracies or incorrect information contained on this site.  
Please visit <http://www.erudus.com/terms-and-conditions> for full terms and conditions.