

Changed Jun 17, 2025 10:13

Reviewed Jun 17, 2025 10:13

Erudus ID ce9f64443fb84a85bb66d453a39791e3

Version 3.0

Status Published

This specification is published by [Erudus](#) for Country Range Group

Country Range White Baguette, Part Baked 30 x 135g

Frozen White Baguette (Part Baked) 30x3.9kg

PRODUCT DESCRIPTION

Part Baked

Brand	Country Range Group
Label Own Label Code	1433
Product Type	Food
Product Category	Sandwiches
Storage Type	Frozen
Erudus ID	ce9f64443fb84a85bb66d453a39791e3
Specification Type	Generic



Outer Case GTIN

05023616417708



INGREDIENTS

Ingredient Declaration

Wheat Flour (WHEAT Flour, Calcium Carbonate, Iron, Niacin, Thiamin), Water, Yeast, Salt, Flour Treatment Agent (Ascorbic acid).

ALLERGENS

Product Contains:

Celery/Celериac	No	Mustard	No
Cereals Containing Gluten	Yes	Nuts (Tree)	No
Barley	No	Almond nuts	No
Oats	No	Brazil nuts	No
Rye	No	Cashew nuts	No
Wheat (including Spelt and Khorasan)	Yes	Hazelnuts	No
Crustacea	No	Macadamia (Queensland) nuts	No
Eggs	No	Pecan nuts	No
Fish	No	Pistachio nuts	No
Lupin	No	Walnuts	No
Milk	No	Peanuts	No
Molluscs	No	Sesame Seeds	May Contain
		Soybeans	No
		Sulphur Dioxide and Sulphites	No

Risk Source:

SUPPLEMENTARY
INGREDIENT
INFORMATION

Palm Oil	No	Alcoholic Strength %Vol (ABV)	0 % Vol
Hydrogenated Vegetable Oil/Fat	No		
GM Protein/DNA	No		

ADDITIVES

Product Contains:

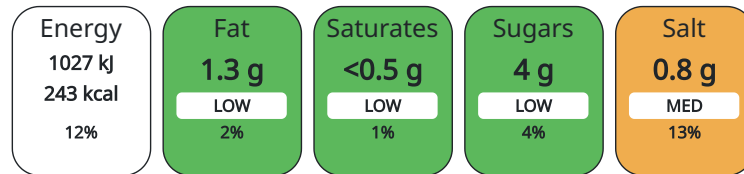
Artificial Antioxidants	No	Artificial Flavourings	No
Artificial Colours	No	Artificial Preservatives	No
Artificial Flavour Enhancers	No	Artificial Sweeteners	No

DIET SUITABILITY

Vegan Diet	Suitable for	Vegetarian Diet	Suitable for
Halal Diet	Suitable for	Kosher Diet	No

NUTRITIONAL
INFORMATION AS
SOLD

Each 100g/ml portion contains:



of your reference intake.

Typical values per 100g/ml : Energy 243kcal / 1027kJ

Nutrient	per 100g	RI per 100g	per 135g serving	RI per 135g serving
Energy (kJ)	1027.1 kJ	12%	1386.59	17%
Energy (kcal)	242.5 kcal	12%	327.38	16%
Fat	1.3 g	2%	1.76 g	3%
of which Saturates	0.2 g	1%	0.27 g	1%
of which Mono-unsaturates	0.2 g		0.27 g	
of which Polyunsaturates	0.8 g		1.08 g	
Carbohydrate	47.2 g	18%	63.72 g	25%
of which Sugars	4 g	4%	5.4 g	6%
of which Polyols	0 g		0 g	
of which Starch	0 g		0 g	
Fibre	3.8 g		5.13 g	
Protein	8.6 g	17%	11.61 g	23%
Salt	0.8 g	13%	1.08 g	18%
Sodium	320 mg		432 mg	
Serving Size	135 g			

VITAMINS AND
MINERALS AS
SOLD

Nutrient	per 100g	RI per 100g	per 135g serving	RI per 135g serving
Vitamin A	0 µg		0 µg	
Vitamin C	0 mg		0 mg	
Folate/Folic Acid	20 µg	10%	27 µg	14%
Calcium	100 mg	13%	135 mg	17%
Iron	1.6 mg	11%	2.16 mg	15%
Zinc	0.7 mg	7%	0.95 mg	10%

SUPPLEMENTARY
NUTRITIONAL
INFORMATION

Cholesterol per 100 g/ml (UK/FR)	0 g
Trans Fats per 100 g/ml	0.1 g
Fat Percentage in Dry Matter per 100 g/ml	1.33 %
Non Milk Extrinsic Sugars per 100 g/ml	4 g

HFSS (HIGH IN
FAT, SALT AND
SUGAR)

HFSS Status	No
--------------------	----

HANDLING &
STORAGE
INFORMATION

Directions For Use

Baking Instructions - Preheat Oven To 200°C (Gas Mark 6). Bake Product From Frozen For 8 - 10 Minutes Until Golden Brown, Best Consumed Within 4 Hours. Slice Split And Fill Or Slice And Serve With Soups And Starters

Storage Instructions

Keep Frozen At -18c Or Below. Once Defrosted Do Not Refreeze

Shelf Life from Time of Production	365 Days
---	----------

ACCREDITATIONS/
CERTIFICATIONS/
ASSURANCE
SCHEMES
ORIGIN

BRCGS Certified

Product Country of Origin	United Kingdom
----------------------------------	----------------

Origin of the Primary Ingredient	United Kingdom
---	----------------

PRODUCT
CHARACTERISTICS
CONFIGURATION

Standards Testing

Case Configuration

Inner Pack Configuration

Total Quantity of Inner Components in Outer Case	30 Units
---	----------

Outer Case

Is the Outer Case Splittable?	No
--------------------------------------	----

PRODUCT
WEIGHTS

Inner Component

Variable Weight Consumer Item	No
--------------------------------------	----

Inner Component Weight	3.9 kg
-------------------------------	--------

Outer Case

Outer Case Gross Weight	4.36 kg
--------------------------------	---------

Outer Case Net Weight	0.29 kg
------------------------------	---------

PRODUCT
DIMENSIONS

Inner Component

Inner Component Depth	780 mm
------------------------------	--------

Inner Component Width	440 mm
------------------------------	--------

Inner Component Height	0 mm
-------------------------------	------

Outer Case

Outer Case Depth	425 mm
-------------------------	--------

Outer Case Width	325 mm
-------------------------	--------

Outer Case Height	210 mm
--------------------------	--------

PALLET
INFORMATION

Quantity of Cases Per Pallet Layer	8 Cases
---	---------

Pallet Type	UK Standard Pallet
--------------------	--------------------

Quantity of Layers Per Pallet	7 Layers
--------------------------------------	----------

Pallet Height	1.7 MTR
----------------------	---------

Quantity of Cases Per Pallet	56 Cases
-------------------------------------	----------

Pallet Gross Weight	269.4 kg
----------------------------	----------

PACKAGING

Inner Component Packaging

Type	Materials	Weight	Recycled Material %	Recyclable	Returnable	Composite
Bag	Plastic	22.4 g	0.00 %			

Outer Case Packaging

Type	Materials	Weight	Recycled Material %	Recyclable	Returnable	Composite
Case	Other	285 g				

Transport Packaging

Type	Materials	Weight	Recycled Material %	Recyclable	Returnable	Composite
Other	Plastic	325 g	0.00 %		Yes	
Other	Paper/Cardboard	284 g			Yes	
Other	Wood	25000 g			Yes	

OTHER INFORMATION

Intrastat/Taric Code 19059030

Manufacturer Comments

No

CONTACT INFORMATION

ADDRESS

Country Range Group
Accrington
Lancs
United Kingdom

P: (Phone) 0845 209 3777

The information on the [Erudus System](#) has been supplied by the manufacturers of the products and, whilst the owners of the Erudus System take steps to ensure the information is regularly updated, they give no warranty and no guarantee that the information is accurate. Product information and ingredients may change, please always read product labels carefully in addition to using the information provided by Erudus.

We do not accept liability for any inaccuracies or incorrect information contained on this site.
Please visit <http://www.erudus.com/terms-and-conditions> for full terms and conditions.