

Changed Jan 04, 2025 05:53

Erudus ID 8ecab6c4689d4416b46f7763342c9e43

Version 2.1

Status Published



This specification is published by [Erudus](#) for Country Range Group

935426

# Country Range Frozen Medium Wholemeal Square Sliced Bread (18+2)

Wholemeal Bread 8x

## PRODUCT DESCRIPTION

Frozen Medium Wholemeal Square Sliced Bread (18+2)

Brand	Country Range Group
Label Own Label Code	F01026
Product Type	Food
Product Category	Bakery - General
Storage Type	Frozen
Erudus ID	8ecab6c4689d4416b46f7763342c9e43
Specification Type	Legacy



Outer Case GTIN

05023616488906



## INGREDIENTS

### Ingredient Declaration

Wholemeal **WHEAT** Flour, Water, Salt, Wheat Flour (**WHEAT** Flour, Calcium Carbonate, Iron, Niacin, Thiamin), Palm Oil, Yeast, Emulsifiers (Mono- and Di-Acetyl tartaric Acid Esters of Mono- and Di-Glycerides of Fatty Acids, Mono- and Di-Glycerides of Fatty Acids), Preservative (Calcium Propionate), **SOYA** Flour, Spirit Vinegar, Flour Treatment Agent (Ascorbic Acid).

## ALLERGENS

Product Contains:

<b>Celery/Celeryiac</b>	No	<b>Mustard</b>	No
<b>Cereals Containing Gluten</b>	Yes	<b>Nuts (Tree)</b>	No
<b>Barley</b>	May Contain	<b>Almond nuts</b>	No
<b>Oats</b>	No	<b>Brazil nuts</b>	No
<b>Rye</b>	No	<b>Cashew nuts</b>	No
<b>Wheat (including Spelt and Khorasan)</b>	Yes	<b>Hazelnuts</b>	No
<b>Gluten content &lt;20ppm</b>	No	<b>Macadamia (Queensland) nuts</b>	No
<b>Crustacea</b>	No	<b>Pecan nuts</b>	No
<b>Eggs</b>	No	<b>Pistachio nuts</b>	No
<b>Fish</b>	No	<b>Walnuts</b>	No
<b>Lupin</b>	No	<b>Peanuts</b>	No
<b>Milk</b>	No	<b>Sesame Seeds</b>	No
<b>Molluscs</b>	No	<b>Soybeans</b>	Yes
		<b>Sulphur Dioxide and Sulphites</b>	No

Risk Source:

SUPPLEMENTARY  
INGREDIENT  
INFORMATION

<b>Palm Oil</b>	Yes	<b>Alcoholic Strength %Vol (ABV)</b>	0 % Vol
<b>Hydrogenated Vegetable Oil/Fat</b>	No		
<b>GM Protein/DNA</b>	No		

ADDITIVES

*Product Contains:*

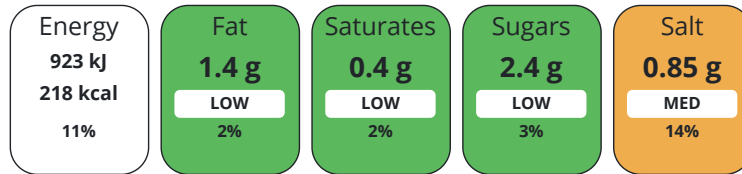
<b>Artificial Antioxidants</b>	No	<b>Artificial Flavourings</b>	No
<b>Artificial Colours</b>	No	<b>Artificial Preservatives</b>	No
<b>Artificial Flavour Enhancers</b>	No	<b>Artificial Sweeteners</b>	No

DIET SUITABILITY

<b>Suitable for Coeliacs</b>	No	<b>Halal Diet</b>	No
<b>Kosher Diet</b>	No	<b>Vegetarian Diet</b>	Suitable for
<b>Vegan Diet</b>	Suitable for		

NUTRITIONAL  
INFORMATION

Each 100g/ml portion contains:



of your reference intake.

Typical values per 100g/ml : Energy 218kcal / 923kj

Nutrient	per 100g/ml	RI per 100g/ml	per 40g/ml serving	RI per 40g/ml serving
<b>Energy (kJ)</b>	923 kJ	11%	369.2	4%
<b>Energy (kcal)</b>	218 kcal	11%	87.2	4%
<b>Fat</b>	1.4 g	2%	0.56 g	1%
<b>of which Saturates</b>	0.4 g	2%	0.16 g	1%
<b>of which Mono-unsaturates</b>	0.5 g		0.2 g	
<b>of which Polyunsaturates</b>	0.4 g		0.16 g	
<b>Carbohydrate</b>	38.2 g	15%	15.28 g	6%
<b>of which Sugars</b>	2.4 g	3%	0.96 g	1%
<b>of which Polyols</b>	0 g		0 g	
<b>of which Starch</b>	35.6 g		14.24 g	
<b>Fibre</b>	7.1 g		2.84 g	
<b>Protein</b>	9.7 g	19%	3.88 g	8%
<b>Salt</b>	0.85 g	14%	0.34 g	6%
<b>Sodium</b>	340 mg		136 mg	

**Serving Size** 40 g

VITAMINS AND  
MINERALS

Nutrient	per 100g/ml	RI per 100g/ml	per 40g/ml serving	RI per 40g/ml serving
<b>Vitamin A</b>	0 µg		0 µg	
<b>Vitamin C</b>	7 mg	9%	2.8 mg	4%
<b>Folate/Folic Acid</b>	25 µg	13%	10 µg	5%
<b>Calcium</b>	177 mg	22%	70.8 mg	9%
<b>Iron</b>	1.6 mg	11%	0.64 mg	5%
<b>Zinc</b>	0.8 mg	8%	0.32 mg	3%

SUPPLEMENTARY  
NUTRITIONAL  
INFORMATION

<b>Cholesterol per 100 g/ml (UK/FR)</b>	0 g
<b>Trans Fats per 100 g/ml</b>	0 g
<b>Fat Percentage in Dry Matter per 100 g/ml</b>	0 %
<b>Non Milk Extrinsic Sugars per 100 g/ml</b>	2.4 g

HFSS (HIGH IN  
FAT, SALT AND  
SUGAR)  
HANDLING &  
STORAGE  
INFORMATION

<b>HFSS Status</b>	No
--------------------	----

**Directions For Use**

To defrost remove from case and and leave bag at room temperature for approximately 6 hours or until fully defrosted. Once defrosted store in the sealed bag in a cool dry place away from direct sunlight and use within 5 days.

**Storage Instructions**

Keep frozen at -18°C or below. Do not refreeze after thawing.

<b>Shelf Life from Time of Production</b>	365 Days
---	----------

**Roundtable of Sustainable Palm Oil (RSPO)**

ACCREDITATIONS/  
CERTIFICATIONS/  
ASSURANCE  
SCHEMES  
ORIGIN

<b>Product Country of Origin</b>	United Kingdom
----------------------------------	----------------

PRODUCT  
CHARACTERISTICS  
CONFIGURATION

Standards Testing

Case Configuration

Inner Pack Configuration

<b>Total Quantity of Inner Components in Outer Case</b>	8 Units
---	---------

**Outer Case**

<b>Is the Outer Case Splittable?</b>	No
--------------------------------------	----

PRODUCT  
WEIGHTS

Inner Component

<b>Variable Weight Consumer Item</b>	No
--------------------------------------	----

<b>Net Drained Weight</b>	0 kg
---------------------------	------

**Weight/Volume**

8 X 800g e

Outer Case

<b>Outer Case Gross Weight</b>	6.96 kg
--------------------------------	---------

<b>Outer Case Net Weight</b>	0.5 kg
------------------------------	--------

PRODUCT  
DIMENSIONS

Inner Component

<b>Inner Component Depth</b>	400 mm
------------------------------	--------

<b>Inner Component Width</b>	260 mm
------------------------------	--------

<b>Inner Component Height</b>	110 mm
-------------------------------	--------

Outer Case

<b>Outer Case Depth</b>	495 mm
-------------------------	--------

<b>Outer Case Width</b>	297 mm
-------------------------	--------

<b>Outer Case Height</b>	253 mm
--------------------------	--------

PALLET  
INFORMATION

<b>Quantity of Cases Per Pallet Layer</b>	8 Cases
---	---------

<b>Pallet Height</b>	1.93 MTR
----------------------	----------

<b>Quantity of Layers Per Pallet</b>	7 Layers
--------------------------------------	----------

<b>Pallet Gross Weight</b>	418.7 kg
----------------------------	----------

<b>Quantity of Cases Per Pallet</b>	56 Cases
-------------------------------------	----------

PACKAGING

Inner Component Packaging

Type	Materials	Weight	Recycled Plastic %	Recyclable	Returnable	Composite
Bag	Plastic	7.1 g	- %			

Outer Case Packaging

Type	Materials	Weight	Recycled Plastic %	Recyclable	Returnable	Composite
Case	Paper/Cardboard	498 g	- %			

Transport Packaging

Type	Materials	Weight	Recycled Plastic %	Recyclable	Returnable	Composite
Other	Wood	28000 g	- %		Yes	

OTHER INFORMATION

<b>Intrastat/Taric Code</b>	1905903000	<b>Identification/Health Marks</b>	N/A
-----------------------------	------------	------------------------------------	-----

**Manufacturer Comments**

Annual review of specification carried out 23/12/24

CONTACT INFORMATION

ADDRESS

Country Range Group  
 Accrington  
 Lancs  
 United Kingdom

P: (Phone) 0845 209 3777

The information on the [Erudus System](#) has been supplied by the manufacturers of the products and, whilst the owners of the Erudus System take steps to ensure the information is regularly updated, they give no warranty and no guarantee that the information is accurate. Product information and ingredients may change, please always read product labels carefully in addition to using the information provided by Erudus.

We do not accept liability for any inaccuracies or incorrect information contained on this site.  
 Please visit <http://www.erudus.com/terms-and-conditions> for full terms and conditions.