

Changed Aug 13, 2025 15:51

Reviewed Aug 13, 2025 15:51

Erudus ID 50184ee4e6614c1fad53ca69793fed21

Version 1.2

Status Published

970469

# Frozen Batch Rolls White Mini



White Batch Mini Rolls 75x50g

## PRODUCT DESCRIPTION

Soft Mini White Batch Rolls

Brand	Ashers Baking Company Ltd
Manufacturer Product Code	01004
Effective Date	Aug 13, 2025
Product Type	Food
Product Category	Other
Storage Type	Frozen
Erudus ID	50184ee4e6614c1fad53ca69793fed21
Specification Type	Generic

Outer Case GTIN 5096627010046



## INGREDIENTS

### Ingredient Declaration

**WHEAT** Flour (contains Calcium, Thiamin, Iron, Niacin), Water, **WHEAT** gluten, Salt, Vegetable Oil (Rapeseed, Palm), **SOYA** Flour, Dextrose, Emulsifiers: Mono- and Diglycerides of Fatty Acids, Mono- and Diacetyl Tartaric Acid Esters of Mono- and Diglycerides of Fatty Acids; Enzymes (**WHEAT**), Flour Treatment Agent: Ascorbic Acid; Yeast.

## ALLERGENS

Product Contains:

<b>Celery/Celery</b>	No	<b>Mustard</b>	May Contain
<b>Cereals Containing Gluten</b>	Yes	<b>Nuts (Tree)</b>	May Contain
<b>Barley</b>	May Contain	<b>Almond nuts</b>	May Contain
<b>Oats</b>	May Contain	<b>Brazil nuts</b>	May Contain
<b>Rye</b>	May Contain	<b>Cashew nuts</b>	May Contain
<b>Wheat (including Spelt and Khorasan)</b>	Yes	<b>Hazelnuts</b>	May Contain
<b>Crustacea</b>	No	<b>Macadamia (Queensland) nuts</b>	May Contain
<b>Eggs</b>	May Contain	<b>Pecan nuts</b>	May Contain
<b>Fish</b>	No	<b>Pistachio nuts</b>	May Contain
<b>Lupin</b>	No	<b>Walnuts</b>	May Contain
<b>Milk</b>	May Contain	<b>Peanuts</b>	May Contain
<b>Molluscs</b>	No	<b>Sesame Seeds</b>	May Contain
		<b>Soybeans</b>	Yes
		<b>Sulphur Dioxide and Sulphites</b>	May Contain

Risk Source:

<b>Barley (Risk Source)</b>	Factory	<b>Oats (Risk Source)</b>	Factory
<b>Rye (Risk Source)</b>	Line	<b>Eggs (Risk Source)</b>	Line
<b>Milk (Risk Source)</b>	Line	<b>Mustard (Risk Source)</b>	Factory
<b>Tree Nuts (Risk Source)</b>	Factory	<b>Almond nuts (Risk Source)</b>	Factory
<b>Brazil nuts (Risk Source)</b>	Factory	<b>Cashew nuts (Risk Source)</b>	Factory
<b>Hazelnuts (Risk Source)</b>	Factory		
<b>Sesame Seeds (Risk Source)</b>	Line	<b>Sulphur Dioxide and Sulphites (Risk Source)</b>	Factory

**Allergen Statement On Pack**

For allergens, including cereals containing GLUTEN, see ingredients highlighted in BOLD. Not suitable for NUT, PEANUT, MILK, EGG, SULPHITE, SESAME, MUSTARD allergy sufferers.

SUPPLEMENTARY  
INGREDIENT  
INFORMATION

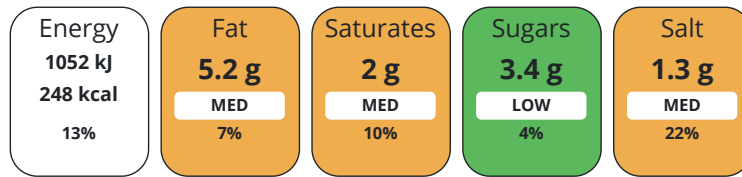
<b>Palm Oil</b>	Yes
<b>GM Protein/DNA</b>	No

ADDITIVES

Product Contains:

NUTRITIONAL  
INFORMATION AS  
SOLD

Each 100g/ml portion contains:



of your reference intake.

Typical values per 100g/ml : Energy 248kcal / 1052kJ

Nutrient	per 100g	RI per 100g
<b>Energy (kJ)</b>	1052 kJ	13%
<b>Energy (kcal)</b>	248 kcal	12%
<b>Fat</b>	5.2 g	7%
<b>of which Saturates</b>	2 g	10%
<b>Carbohydrate</b>	45 g	17%
<b>of which Sugars</b>	3.4 g	4%
<b>Protein</b>	5.7 g	11%
<b>Salt</b>	1.3 g	22%

**Source of Nutritional Information** Calculation from known/accepted datasets

SUPPLEMENTARY  
NUTRITIONAL  
INFORMATION

HANDLING &  
STORAGE  
INFORMATION

**Directions For Use**

Remove required amount and return the remaining product to the freezer immediately, Defrost before use. For best results consume within 24 hours.

**Storage Instructions**

Keep frozen at <-18°C

**Shelf Life from Time of Production** 365 Days

ACCREDITATIONS/  
CERTIFICATIONS/  
ASSURANCE  
SCHEMES  
ORIGIN

**SALSA (Safe & Local Supplier Approval)**

**Product Country of Origin** Northern Ireland

**Origin of the Primary Ingredient** Not Applicable

PRODUCT  
CHARACTERISTICS

Standards Testing

**Do you undertake trend analysis of microbiological results?** Yes **Is shelf life testing undertaken?** Yes

Microbiological Standards

Organism	Description	Frequency	Target	Maximum	Sample (g or ml)
Total Viable Count (TVC) (cfu/g or ml)		Occasionally	<100000	1000000	10
Enterobacteriaceae (cfu/g or ml)		Occasionally	<100	10000	10
E. Coli (cfu/g or ml)		Occasionally	<20	100	10
Staphylococcus Aureus (cfu/g or ml)		Occasionally	<1000	10000	10
Yeast (cfu/g or ml)		Occasionally	<1000	10000	10
Moulds (cfu/g or ml)		Occasionally	<1000	10000	10
Listeria Monocytogenes (cfu/g or ml)		Occasionally	<0	0	25

CONFIGURATION

Case Configuration

Inner Pack Configuration

**Total Quantity of Inner Components in Outer Case** 75 Units **Count per Inner Component** 75

**Is the Outer Case Splittable?** No

PRODUCT  
WEIGHTS

Inner Component

**Variable Weight Consumer Item** No

**Inner Component Weight** 50 g

**e mark** No

Outer Case

**Outer Case Gross Weight** 4.64 kg

**Outer Case Net Weight** 4.44 kg

PRODUCT  
DIMENSIONS

Inner Component

**Inner Component Depth** 85 mm

**Inner Component Width** 50 mm

**Inner Component Height** 50 mm

Outer Case

**Outer Case Depth** 407 mm

**Outer Case Width** 302 mm

**Outer Case Height** 202 mm

PALLET  
INFORMATION

**Quantity of Cases Per Pallet Layer** 6 Cases

**Pallet Type** UK Standard Pallet

**Quantity of Layers Per Pallet** 7 Layers

**Pallet Height** 1.21 MTR

**Quantity of Cases Per Pallet** 42 Cases

**Pallet Gross Weight** 195 kg

SAFETY &  
WARNINGS

OTHER  
INFORMATION

CONTACT  
INFORMATION

Address

Ashers Baking Company Ltd  
581 Doagh Road  
Ballyearl  
Newtownabbey  
County Antrim  
BT365RZ  
United Kingdom

[P: \(Phone\) 02890836686](tel:02890836686)

Complaints Contact

Marita Jackson  
Quality Manager  
[quality@ashersbakingco.com](mailto:quality@ashersbakingco.com)

[P: \(Phone\) 02890836686](tel:02890836686)

Technical Contact

Marita Jackson  
Quality Technician  
[quality@ashersbakingco.com](mailto:quality@ashersbakingco.com)

[P: \(Phone\) 02890836686](tel:02890836686)

Commercial Contact

Colin Donaldson  
Sales Manager  
[wholesale@ashersbakingco.com](mailto:wholesale@ashersbakingco.com)

[P: \(Phone\) 07546511425](tel:07546511425)

The information on the [Erudus System](#) has been supplied by the manufacturers of the products and, whilst the owners of the Erudus System take steps to ensure the information is regularly updated, they give no warranty and no guarantee that the information is accurate. Product information and ingredients may change, please always read product labels carefully in addition to using the information provided by Erudus.

We do not accept liability for any inaccuracies or incorrect information contained on this site.  
Please visit <http://www.erudus.com/terms-and-conditions> for full terms and conditions.