

971236

Americana 4" Unseeded Burger Bun

Unseeded Burger Bun

PRODUCT DESCRIPTION

A fully baked, fully sliced white burger bun, approximately 95m in diameter. The buns are supplied frozen.

Brand	Lantmannen Unibake
Manufacturer Product Code	1002
Product Type	Food
Product Category	Bakery - General
Storage Type	Frozen
Erudus ID	c450becb2de54076b05a9a3feaaa4714
Specification Type	Legacy
Inner Component GTIN	5037173000020
Outer Case GTIN	05037173100027



INGREDIENTS

Ingredient Declaration

WHEAT Flour (with Calcium, Iron, Niacin and Thiamin), Water, Sugar, Yeast, Vegetable Oils (Palm and Rapeseed), Salt, Emulsifiers (E472e, E471), Preservative (E282), Flour Treatment Agent (E300).

ALLERGENS

Product Contains:

Celery/Celeriac	No	Mustard	No
Cereals Containing Gluten	Yes	Nuts (Tree)	No
Barley	No	Almond nuts	No
Oats	No	Brazil nuts	No
Rye	No	Cashew nuts	No
Wheat (including Spelt and Khorasan)	Yes	Hazelnuts	No
Gluten content <20ppm	No	Macadamia (Queensland) nuts	No
Crustacea	No	Pecan nuts	No
Eggs	No	Pistachio nuts	No
Fish	No	Walnuts	No
Lupin	No	Peanuts	No
Milk	No	Sesame Seeds	May Contain
Molluscs	No	Soybeans	No
		Sulphur Dioxide and Sulphites	No

Risk Source:

Additional Allergen Information

For allergens, including cereals containing gluten, see ingredients in CAPITALS. May also contain sesame seeds.

SUPPLEMENTARY INGREDIENT INFORMATION

Palm Oil	Yes
Hydrogenated Vegetable Oil/Fat	No
GM Protein/DNA	No

ADDITIVES

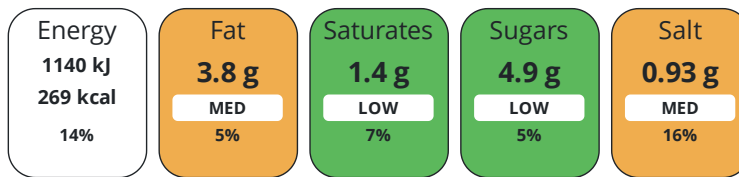
Product Contains:

Artificial Antioxidants	No	Artificial Flavourings	No
Artificial Colours	No	Artificial Preservatives	Yes
Artificial Flavour Enhancers	No	Artificial Sweeteners	No
Suitable for Coeliacs	No	Halal Diet	Suitable for
Kosher Diet	No	Vegetarian Diet	Suitable for
Vegan Diet	Suitable for		

DIET SUITABILITY

NUTRITIONAL INFORMATION

Each 100g/ml portion contains:



of your reference intake.

Typical values per 100g/ml : Energy 269kcal / 1140kj

Nutrient	per 100g/ml	RI per 100g/ml	per 50g/ml serving	RI per 50g/ml serving
Energy (kJ)	1140 kJ	14%	570 kJ	7%
Energy (kcal)	269 kcal	13%	134.5 kcal	7%
Fat	3.8 g	5%	1.9 g	3%
of which Saturates	1.4 g	7%	0.7 g	4%
of which Mono-unsaturates	1.2 g		0.6 g	
of which Polyunsaturates	1 g		0.5 g	
Carbohydrate	48.5 g	19%	24.3 g	9%
of which Sugars	4.9 g	5%	2.5 g	3%
Fibre	2.2 g		1.1 g	
Protein	9.1 g	18%	4.6 g	9%
Salt	0.93 g	16%	0.5 g	8%
Sodium	371 mg		185.5 mg	

Serving Size 50 g

SUPPLEMENTARY NUTRITIONAL INFORMATION

HANDLING & STORAGE INFORMATION

Directions For Use

To defrost: Remove the packs from the box and lie flat. Defrost for approx. 1 hour at room temperature. The cut surface may be toasted until golden brown

Storage Instructions

Can be stored until best before date or stored at -18 deg C or below. Once thawed, store in a cool dry place in a sealed bag and use within 4 days. Do not store defrosted products at chilled temperatures as this will accelerate staling. DO NOT REFREEZE ONCE DEFROSTED.

Shelf Life from Time of Production 365 Days

ACCREDITATIONS/ CERTIFICATIONS/ ASSURANCE SCHEMES

BRCGS Certified
Roundtable of Sustainable Palm Oil (RSPO)

Other Accreditation

ORIGIN	Product Country of Origin/Place of Provenance	United Kingdom				
PRODUCT CHARACTERISTICS	Additional Origin Details	n/a				
	Standards Testing					
	Do you undertake trend analysis of microbiological results?	Yes	Is shelf life testing undertaken?	Yes		
	Microbiological Standards					
	Organism	Description	Frequency	Target	Maximum	Sample (g or ml)
	E. Coli (cfu/g or ml)		Annually	<10	10	-
	Enterobacteriaceae (cfu/g or ml)		Annually	<100	100	-
	Staphylococcus Aureus (cfu/g or ml)		Annually	<50	50	-
	Salmonella (cfu/g or ml)		Annually	=0	0	-
	Yeast (cfu/g or ml)		Annually	<1000	1000	-
Moulds (cfu/g or ml)		Annually	<1000	1000	-	
Aerobic Colony Count (ACC) (cfu/g or ml)		Annually	<1000	1000	-	
Physical Standards						
Test	Description	Frequency	Target	Range	Sample (g or ml)	
Dimensions Diameter (mm)		Every Batch	=95	90 to 100	-	
Dimensions Height (mm)		Every Batch	=37	34 to 40	-	
Weight (g)		Every Batch	=50	45 to 55	-	
CONFIGURATION	Case Configuration	Inner Pack Configuration				
	Total Quantity of Inner Components in Outer Case	4 Units				
	Is the Outer Case Splittable?	No				
PRODUCT WEIGHTS	Inner Component					
	Variable Weight Consumer Item	Yes				
	Weight/Volume	12 buns per bag. 4 bags per case.				
	Outer Case					
	Outer Case Gross Weight	2.63 kg				
	Outer Case Net Weight	2.4 kg				
PRODUCT DIMENSIONS	Inner Component					
	Inner Component Depth	399 mm				
	Inner Component Width	252 mm				
	Inner Component Height	0 mm				
	Outer Case					
	Outer Case Depth	390 mm				
	Outer Case Width	291 mm				
	Outer Case Height	158 mm				

PALLET
INFORMATION

Quantity of Cases Per Pallet Layer	10 Cases	Pallet Height	1.74 MTR
Quantity of Layers Per Pallet	10 Layers	Pallet Gross Weight	288.3 kg
Quantity of Cases Per Pallet	100 Cases		

PACKAGING

Inner Component Packaging

Type	Materials	Weight	Recycled Plastic %	Recyclable	Returnable	Composite
Bag	Plastic	19 g	- %			

Outer Case Packaging

Type	Materials	Weight	Recycled Plastic %	Recyclable	Returnable	Composite
Case	Plastic	3 g	- %			
Case	Paper/Cardboard	202 g	- %			

Transport Packaging

Type	Materials	Weight	Recycled Plastic %	Recyclable	Returnable	Composite
Other	Plastic	280 g	- %			
Other	Paper/Cardboard	2 g	- %			
Other	Wood	25000 g	- %			

OTHER
INFORMATION

Manufacturer Comments

BRC certificate re-issued annually following audit.

CONTACT
INFORMATION

Address

Lantmannen Unibake
Maidstone Road
Kingston
Milton Keynes
MK10 0BD
England

Technical Contact

Inesa Jegoroviene
Senior Specifications Technologist
inesa.jegoroviene@lantmannen.com

P: (Phone) 07885418956

P: (Phone) 07780837112

Complaints Contact

Ursula Jaillet
Technical Coordinator
unibakeuk.technicalservices@lantmannen.com

The information on the [Erudus System](#) has been supplied by the manufacturers of the products and, whilst the owners of the Erudus System take steps to ensure the information is regularly updated, they give no warranty and no guarantee that the information is accurate. Product information and ingredients may change, please always read product labels carefully in addition to using the information provided by Erudus.

We do not accept liability for any inaccuracies or incorrect information contained on this site.
Please visit <http://www.erudus.com/terms-and-conditions> for full terms and conditions.