

Changed Apr 07, 2026 07:55

Reviewed Apr 07, 2026 07:55

Erudus ID 3113cdb6bd0f4541ab031bdd0de5a170

Version 2.0

Status Published

979549

Large Plain Naan 130g (1 x 24)

Large Plain Naan 130g (1 X 24) 1x0.13kg

PRODUCT DESCRIPTION

Fully baked teardrop shaped naan breads with kalonji seeds. (1 x 24)

Manufacturer Product Code	BFL5275V
Product Type	Food
Product Category	Naans & Flatbreads
Storage Type	Frozen
Erudus ID	3113cdb6bd0f4541ab031bdd0de5a170
Specification Type	Bakery Products



Outer Case GTIN 5022558000900



INGREDIENTS

Ingredient Declaration

Fortified WHEAT Flour (WHEAT Flour, Calcium Carbonate, Niacin, Iron, Folic Acid, Thiamin), Water, Rapeseed Oil, Raising Agents (Monocalcium Phosphates, Sodium Bicarbonate), Yeast, Salt, Kalonji Seeds.

ALLERGENS

Product Contains:

Celery/Celeriac	No	Mustard	No
Cereals Containing Gluten	Yes	Nuts (Tree)	No
Barley	No	Almond nuts	No
Oats	No	Brazil nuts	No
Rye	No	Cashew nuts	No
Wheat (including Spelt and Khorasan)	Yes	Hazelnuts	No
Crustacea	No	Macadamia (Queensland) nuts	No
Eggs	No	Pecan nuts	No
Fish	No	Pistachio nuts	No
Lupin	No	Walnuts	No
Milk	No	Peanuts	No
Molluscs	No	Sesame Seeds	No
		Soybeans	No
		Sulphur Dioxide and Sulphites	No

Allergen Statement On Pack

For allergens, including cereals containing gluten, see ingredients in CAPITALS

SUPPLEMENTARY
INGREDIENT
INFORMATION

Palm Oil	No
Hydrogenated Vegetable Oil/Fat	No
GM Protein/DNA	No

ADDITIVES

Product Contains:

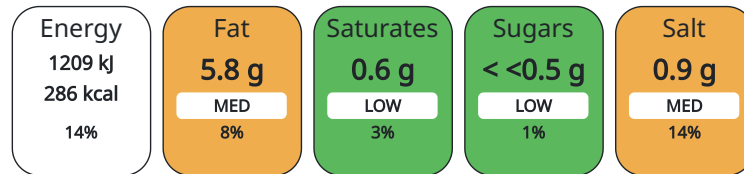
Artificial Colours	No	Artificial Flavourings	No
Artificial Flavour Enhancers	No	Artificial Preservatives	No
		Artificial Sweeteners	No

DIET SUITABILITY

Vegan Diet	Suitable for	Vegetarian Diet	Suitable for
Halal Diet	No	Kosher Diet	No

NUTRITIONAL
INFORMATION AS
SOLD

Each 100g/ml portion contains:



of your reference intake.

Typical values per 100g/ml : Energy 286kcal / 1209kJ

Nutrient	per 100g	RI per 100g	per 130g serving	RI per 130g serving
Energy (kJ)	1209 kJ	14%	1572 kJ	19%
Energy (kcal)	286 kcal	14%	372 kcal	19%
Fat	5.8 g	8%	7.5 g	11%
of which Saturates	0.6 g	3%	0.8 g	4%
of which Mono-unsaturates	3.3 g		4.3 g	
of which Polyunsaturates	1.6 g		2.1 g	
Carbohydrate	50.3 g	19%	65.4 g	25%
of which Sugars	< 0.5 g	1%	< 0.5 g	1%
Fibre	2.2 g		2.9 g	
Protein	7.3 g	15%	9.5 g	19%
Salt	0.85 g	14%	1.11 g	19%
Sodium	340 mg		442 mg	
Serving Size	130 g			

HFSS (HIGH IN
FAT, SALT AND
SUGAR)

HFSS Status	No
HFSS Score	0

HANDLING &
STORAGE
INFORMATION

Directions For Use

From Frozen unless otherwise stated Microwave: 600W-850W. Oven: Remove all packaging and sprinkle lightly with water. Place directly on the oven rack at 200°C/Gas Mark 6 for 4-5 minutes, until golden brown. To maintain vegan integrity, please ensure all equipment used for vegan preparation/cooking/serving is clean or dedicated for vegan use only.

Storage Instructions

Keep Frozen. Store at -18°C or below

Shelf Life from Time of Production	338 Days
------------------------------------	----------

ACCREDITATIONS/
CERTIFICATIONS/
ASSURANCE
SCHEMES

BRCGS Certified	BRCGS Food Safety
Sedex	The Vegan Society

ORIGIN

Product Country of Origin United Kingdom

Origin of the Primary Ingredient Not Applicable

PRODUCT CHARACTERISTICS

Standards Testing

Microbiological Standards

Organism	Description	Frequency	Target	Maximum	Sample (g or ml)
Total Viable Count (TVC) (cfu/g or ml)	In house method	Every Batch	<10000	1000000	-
Coliforms (cfu/g or ml)	Coliforms Weekly 100 cfu/g ISO 4832:2006 Microbiological examination of food and animal feeding stuffs. Enumeration of Coliforms - colony count technique	Every Batch	<100	10000	-
E. Coli (cfu/g or ml)	BS ISO 16649 Horizontal Method for the enumeration of Beta glucuronidase positive E.coli Part 2, colony count at 44Asc(176)C	Every Batch	<0	100	-
Staphylococcus Aureus (cfu/g or ml)	ISO 6888-1 1999+A1:2003 Horizontal method for the enumeration of coagulase-positive staphylococci Part 1: technique using Baird Parker agar medium	Every Batch	<100	10000	-
Bacillus Cereus (cfu/g or ml)	Bacillus Cereus Weekly 100 cfu/g Marks & Spencer Manual of Microbiological Methods 4.3. enumeration of presumptive bacillus cereus, colony count technique (June 2015) Web issue.Plus extension to scope ISO 7932:2004 Horizontal method for the enumeration of presumptive bacillus cereus, colony count technique at 30Asc(176)C	Every Batch	<100	10000	-
Salmonella (cfu/g or ml)	Salmonella Weekly Absent Absent ISO 6579-1:2017 + A1:2020 Microbiology of the food chain - Horizontal method for the detection, enumeration and serotyping of Salmonella	Every Batch	<0	0	25
Listeria Monocytogenes (cfu/g or ml)	Listeria Monocytogenes(Required if product is not processed or heated) Weekly Absent Absent BS EN ISO 11290-1:2017, BS 5763-18:1997 Microbiology of food and animal feeding stuffs - Horizontal method for the detection and enumeration of Listeria monocytogenes Part 1: Detection method	Every Batch	<0	0	25
Yeast (cfu/g or ml)	Yeast's & Moulds Weekly 1000 cfu/g BS ISO 21527-1 (2008) Horizontal method for the enumeration of yeasts and moulds	Every Batch	<100	1000	-
Moulds (cfu/g or ml)	Yeast's & Moulds Weekly 1000 cfu/g BS ISO 21527-1 (2008) Horizontal method for the enumeration of yeasts and moulds	Every Batch	<100	1000	-

SUPPLEMENTARY INFORMATION

Fried During Manufacture No

ORGANOLEPTICS

Appearance

Fully baked teardrop shaped naan bread, golden brown in colour with an uneven bubbly texture. Darker patches on the bubbles and visible kalonji seeds.

Aroma

Fresh baked bread aroma.

Taste

Mild baked bread flavour with a mild onion flavour from the kalonji seeds.

Texture

Soft slightly chewy texture with a slight oily mouth feel.

HAZARD CONTROLS

Metal Detection	Yes	Sieving	Yes
------------------------	-----	----------------	-----

CONFIGURATION

Case Configuration		Inner Pack Configuration	
Variable Inner Components in Outer Case	No	Is Inner Pack Splittable?	No
Total Quantity of Inner Components in Outer Case	1 Units	Count per Inner Component	6
Total Quantity of Inner Packs in Outer Case	4 Units		
Is the Outer Case Splittable?	No		

PRODUCT WEIGHTS

Inner Component	
Variable Weight Consumer Item	No
Inner Component Weight	0.13 kg
Outer Case	
Outer Case Gross Weight	3.32 kg
Outer Case Net Weight	3.12 kg

PRODUCT DIMENSIONS

Inner Component	
Inner Component Depth	0 mm
Inner Component Width	0 mm
Inner Component Height	0 mm
Outer Case	
Outer Case Depth	300 mm
Outer Case Width	266 mm
Outer Case Height	132 mm

PALLET INFORMATION

Quantity of Cases Per Pallet Layer	12 Cases	Pallet Type	UK Standard Pallet
Quantity of Layers Per Pallet	12 Layers	Pallet Height	1.73 MTR
Quantity of Cases Per Pallet	144 Cases	Pallet Gross Weight	492.5 kg

PACKAGING

Inner Pack Packaging						
Type	Materials	Weight	Recycled Material %	Recyclable	Returnable	Composite
Film	Plastic	16 g				
Outer Case Packaging						
Type	Materials	Weight	Recycled Material %	Recyclable	Returnable	Composite
Box	Paper/Cardboard	180 g				

MARKETING INFORMATION

Marketing Description
Fully baked, teardrop-shaped naan bread with kalonji (black onion) seeds. Approx. 10.5" long x 6.5" wide. Packed 4 x 6. Suitable for vegetarians and vegans. (1 x Large Plain Naan)

OTHER INFORMATION

Commodity Code	1905903000
Meursing Code	7015

CONTACT
INFORMATION

Address

Central Foods Group Limited
Maple Court
Ash Lane
NN4 0NB
Collingtree
Northamptonshire
England

technical@centralfoods.co.uk
01604 858 522

Technical

Chris Stobart
technical@centralfoods.co.uk
01604 878 276
Technical Manager

Commercial

Oliver Sampson
osampson@centralfoods.co.uk
07715 073 273
Managing Director

Complaints

Karen Wright
kwright@centralfoods.co.uk
01604 878 299
Customer Care Admin Assistant

The information on the [Erudus System](#) has been supplied by the manufacturers of the products and, whilst the owners of the Erudus System take steps to ensure the information is regularly updated, they give no warranty and no guarantee that the information is accurate. Product information and ingredients may change, please always read product labels carefully in addition to using the information provided by Erudus.

We do not accept liability for any inaccuracies or incorrect information contained on this site.
Please visit <http://www.erudus.com/terms-and-conditions> for full terms and conditions.