

911022

Lockwoods Mushy peas

Mushy Peas 12x

PRODUCT DESCRIPTION

Mushy peas 12 x 1 kg (Lockwoods)

Brand	D'Arta S.A.
Manufacturer Product Code	17014948
Product Type	Food
Product Category	Vegetable
Storage Type	Frozen
Erudus ID	10f07cb21ad546ce8480db10fa69a3d9
Specification Type	Legacy
Inner Component GTIN	5010669020023
Outer Case GTIN	05010669920057



INGREDIENTS

Ingredient Declaration

Re-hydrated Peas (99%), Bicarbonate of Soda

ALLERGENS

Product Contains:

Celery/Celeriac	No	Mustard	No
Cereals Containing Gluten	No	Nuts (Tree)	No
Barley	No	Almond nuts	No
Oats	No	Brazil nuts	No
Rye	No	Cashew nuts	No
Wheat (including Spelt and Khorasan)	No	Hazelnuts	No
Gluten content <20ppm	Yes	Macadamia (Queensland) nuts	No
Crustacea	No	Pecan nuts	No
Eggs	No	Pistachio nuts	No
Fish	No	Walnuts	No
Lupin	No	Peanuts	No
Milk	No	Sesame Seeds	No
Molluscs	No	Soybeans	No
		Sulphur Dioxide and Sulphites	No

SUPPLEMENTARY INGREDIENT INFORMATION

Palm Oil	No	Alcoholic Strength %Vol (ABV)	0 % Vol
Hydrogenated Vegetable Oil/Fat	No		
GM Protein/DNA	No		

ADDITIVES

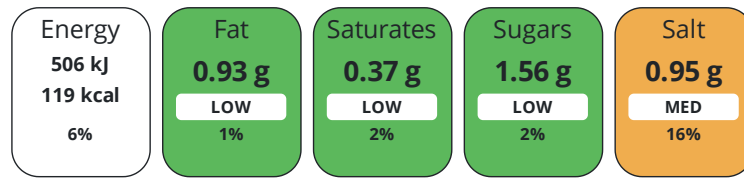
Product Contains:			
Artificial Antioxidants	No	Artificial Flavourings	No
Artificial Colours	No	Artificial Preservatives	No
Artificial Flavour Enhancers	No	Artificial Sweeteners	No

DIET
SUITABILITY

Suitable for Coeliacs	Yes	Halal Diet	No
Kosher Diet	No	Vegetarian Diet	Suitable for
Vegan Diet	Suitable for		

NUTRITIONAL
INFORMATION

Each 100g/ml portion contains:



of your reference intake.

Typical values per 100g/ml : Energy 119kcal / 506kj

Nutrient	per 100g/ml	RI per 100g/ml	per 80g/ml serving	RI per 80g/ml serving
Energy (kJ)	506 kJ	6%	404.8 kJ	5%
Energy (kcal)	119 kcal	6%	95.2 kcal	5%
Fat	0.93 g	1%	0.7 g	1%
of which Saturates	0.37 g	2%	0.3 g	2%
Carbohydrate	17.4 g	7%	13.9 g	5%
of which Sugars	1.56 g	2%	1.2 g	1%
Fibre	11 g		8.8 g	
Protein	10.3 g	21%	8.2 g	16%
Salt	0.95 g	16%	0.8 g	13%
Sodium	380 mg		304 mg	

Serving Size 80 g

SUPPLEMENTARY
NUTRITIONAL
INFORMATION

Cholesterol per 100 g/ml (UK/FR)	0 g
Fat Percentage in Dry Matter per 100 g/ml	0 %
Non Milk Extrinsic Sugars per 100 g/ml	0 g

HFSS (HIGH IN
FAT, SALT AND
SUGAR)
HANDLING &
STORAGE
INFORMATION

HFSS Status No

Directions For Use

. Place the required amount of mushy peas in a saucepan with sufficient water to cover then bring to the boil and simmer. . Cook for 30 minutes stirring occasionally. . If required add extra boiling water to gain the required consistency. . For a mushier pea, a pinch of bicarbonate of soda may be added. . As appliances vary, these are guidelines only. . Add salt if required but remember Government Guidelines recommend that adults should consume less than 6g of salt a day.

Storage Instructions

Refrigerator: 24 hours Freezer compartment fridge: keep for 3 days Freezer= -6°C: 2 days -12°C: 1 month -18°C: see expiry date

Shelf Life from Time of Production 540 Days

ACCREDITATIONS/
CERTIFICATIONS/
ASSURANCE
SCHEMES

BRCGS Certified
ISO 14001 (Environmental Management)

IFS Food Standard

ORIGIN	Product Country of Origin/Place of Provenance	United Kingdom					
	Additional Origin Details	n/a					
PRODUCT CHARACTERISTICS	Standards Testing						
	Do you undertake trend analysis of microbiological results?	Yes	Is shelf life testing undertaken?		Yes		
	Microbiological Standards						
	Organism	Description	Frequency	Target	Maximum	Sample (g or ml)	
	Coliforms (cfu/g or ml)		Every Batch	<500	1000	1	
	E. Coli (cfu/g or ml)		Every Batch	<10	100	1	
	Listeria Monocytogenes (cfu/g or ml)		Occasionally	<1	100	1	
	Total Viable Count (TVC) (cfu/g or ml)		Every Batch	<50000	100000	1	
	Salmonella (cfu/g or ml)		Occasionally	<0	0	25	
Yeast (cfu/g or ml)		Occasionally	<500	1000	1		
Moulds (cfu/g or ml)		Occasionally	<500	1000	1		
CONFIGURATION	Case Configuration	Inner Pack Configuration					
	Total Quantity of Inner Components in Outer Case	12 Units					
	Is the Outer Case Splittable?	Yes					
PRODUCT WEIGHTS	Inner Component						
	Variable Weight Consumer Item	No					
	Net Drained Weight	0 kg					
	Weight/Volume	1 kg					
	Outer Case						
	Outer Case Gross Weight	12.19 kg					
Outer Case Net Weight	12 kg						
PRODUCT DIMENSIONS	Inner Component						
	Inner Component Depth	270 mm					
	Inner Component Width	250 mm					
	Inner Component Height	50 mm					
	Outer Case						
	Outer Case Depth	383 mm					
	Outer Case Width	257 mm					
	Outer Case Height	190 mm					
	PALLET INFORMATION	Quantity of Cases Per Pallet Layer	10 Cases	Pallet Height		1.53 MTR	
Quantity of Layers Per Pallet		7 Layers	Pallet Gross Weight		879 kg		
Quantity of Cases Per Pallet		70 Cases					
PACKAGING	Inner Component Packaging						
	Type	Materials	Weight	Recycled Plastic %	Recyclable	Returnable	Composite
	Bag	Plastic	7 g	0.00 %			

Outer Case Packaging

Type	Materials	Weight	Recycled Plastic %	Recyclable	Returnable	Composite
Case	Plastic	1.1 g	0.00 %			
Case	Paper/Cardboard	240 g	- %			

Transport Packaging

Type	Materials	Weight	Recycled Plastic %	Recyclable	Returnable	Composite
Other	Plastic	160 g	0.00 %		Yes	
Other	Paper/Cardboard	5.7 g	- %		Yes	
Other	Wood	25000 g	- %		Yes	

OTHER INFORMATION

Intrastat/Taric Code 7102100

Manufacturer Comments

n/a

CONTACT INFORMATION

Address

D'Arta S.A.

Pittensestraat 58a

Ardoorie

8850

Belgium

P: (Phone) 01273 704865

The information on the [Erudus System](#) has been supplied by the manufacturers of the products and, whilst the owners of the Erudus System take steps to ensure the information is regularly updated, they give no warranty and no guarantee that the information is accurate. Product information and ingredients may change, please always read product labels carefully in addition to using the information provided by Erudus.

We do not accept liability for any inaccuracies or incorrect information contained on this site. Please visit <http://www.erudus.com/terms-and-conditions> for full terms and conditions.