

Newbridge Foods Product Data Specifications Sheets: NF5

Date: 04.06.2024 Rev No: 012 Section: PDS Page 1 of 2 Prepared By: Daniel Lawler. Approved By: G. Kelly

Product Name: Catering Minced Beef & Onion 150g Pie

Code Reference: NF5

Product Description/Composition:

Meat Pies are composed of a savoury pastry base, meat filling and a puff pastry lid with a pie glaze finish
Savoury Pastry base: 53+/-2g, Meat Filling: 65+/-2g, Puff Pastry Lid: 35+/-2g

Product Weight: 153g+/-6g

Length: N/A

Width: 115mm



Ingredients

Water, **Wheat Flour** [**Wheat Flour**, Calcium Carbonate, Iron, Niacin, Thiamin], Vegetable Oils (Palm, Rapeseed), Beef (15%), Onions (4%), Seasoning [Caramelised Sugar Powder, Salt, **Wheat Flour** [**Wheat Flour**, Calcium Carbonate, Iron, Niacin, Thiamin], Onion Powder, Hydrolysed Vegetable Powder, Dextrose, Yeast Extract, Natural Flavourings (Bay, (Maltodextrin, Salt, **Soy Sauce** (Water, **Soy Beans**, **Wheat**, Salt), Malt Vinegar (**Barley**), Malt Extract (**Barley**), Sugar)), Sugar, Gelling Agent (Methylcellulose), Spice (White Pepper), Mushroom Powder], Corn Flour, Tomato Paste, Flour Treatment Agent (**Wheat Flour** [**Wheat Flour**, Calcium Carbonate, Iron, Niacin, Thiamin], L-Cysteine), Worcester Sauce [Brown Malt Vinegar (**Barley**), Black Treacle (Molasses, Invert Sugar Syrup), Water, Onion, Salt, Tamarind Extract, Garlic, Spices (Ground Cloves, Ground Black Pepper), Lemon Oil], Salt, Gelling Agent (Methylcellulose), Glaze (Dextrin, Dextrose), Emulsifier (Mono & Di-Glycerides of Fatty Acids).

Allergen Information:

For allergens, including cereals containing gluten, see ingredients in **bold**
May also contain Milk.

Baking Instructions:

Cooking Guidelines will vary according to the equipment used. For best results refer to shop bake off summary chart.

Remove product from packaging prior to baking. Best cooked from frozen. Place product onto baking tray at least one inch apart and place into a pre-heated oven and bake at 190°C for 25- 30 minutes until the product is golden brown. Always ensure the product is piping hot throughout before serving. Do not reheat.

Not suitable for microwave cooking.

Nutritional Information

Typical Values	Per 100g (Baked)	Per 150g Product (Baked)
Energy	1244kJ/296kcal	1866kJ/444kcal
Fat (Of which Saturates)	19.0g (9.3g)	28.5g (14.0g)
Carbohydrate (Of which Sugars)	23.8g (1.5g)	35.7g (2.3g)
Fibre	1.1g	1.7g
Protein	7.3g	11.0g
Salt	0.8g	1.2g

Newbridge Foods Product Data Specifications Sheets: NF5

Date: 04.06.2024 Rev No: 012 Section: PDS Page 2 of 2 Prepared By: Daniel Lawler. Approved By: G. Kelly

Microbiological testing program

Name of Product (Finished Products)	Test	Limit cfu/g or = 'm'	Sampling Plan	Dilutions	Sampling Frequency Per Batch Production Run
Beef Based Pies	E.coli	<500/g	n 5 c 0	10(-1)	Bimonthly: 5 samples
	S.aureus	<500/g	n 5 c 0	10(-1)	Bimonthly: 5 samples
	Salmonella	Absent in 10g	n 5 c 0	N/A	Bi-Monthly: 5 Samples of one meat fill type on Rotation
	E.coli 0157	Absent in 25g	n 5 c 0	N/A	Bi-Monthly: 5 Samples of one meat fill type on Rotation

Packaging Details:

Product packaged in **Blue** foil trays.

Foil trays packaged in cardboard outer box.

Case Details (L x W x H):

348 mm x 235 mm x 130 mm

Case Barcode: **05098783001036**

Case Quantity:

24 units per case

Pallet Details (L x W):

1000mm x 1200mm

12 Boxes/Row x 10 Rows = 120 Boxes/Pallet

Storage & Handling Conditions:

Frozen Storage: -18⁰C or colder

Once defrosted, do not refreeze

Best Baked from Frozen

Shelflife details:

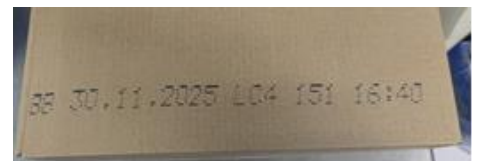
Uncooked: Until Best Before Date if kept frozen (18 months post manufacture).

Cooked: Consume on day of purchase.

Best Before Dates/Traceability:

Outer box has a printed code detailing time packaged and a best before date.

Eg. Of Trace label on back of outer case:



Consumer/End Use:

- Sold to Catering Companies in bulk quantities normally in pallet form. The Catering companies then distribute and sell the products to retail outlets around the country, for baking before selling to the final customer normally the consumer.
- Not suitable for vegetarians, vegans or coeliacs.

Signed:

Daniel Lawler

Date: 04.06.2024

QA & Food Safety Manager

Unless otherwise notified, Newbridge Foods Unlimited assumes all information contained within this specification to be agreed by the recipient.