

Changed Jan 16, 2026 12:10

Reviewed Jan 16, 2026 12:10

Erudus ID 3e5e9772f6214acf922ea9a00c2bfdc2

Version 1.0

Status Published

998734

Vegetable Spring Rolls 80x90g

Vegetable Spring Rolls 80x

PRODUCT DESCRIPTION

Spring roll with vegetables

Manufacturer Product Code	231984
Product Type	Food
Product Category	Other
Storage Type	Frozen
Erudus ID	3e5e9772f6214acf922ea9a00c2bfdc2
Specification Type	Generic



INGREDIENTS

Ingredient Declaration

WHEAT flour, water, CELERY (11%), mung bean sprouts (11%), sweet corn (7%), red pepper (6%), peas (6%), onion (5%), rapeseed oil, modified starch, maize starch, whey powder (MILK), spice blend (salt, pepper, maltodextrin, yeast extract, sugar), salt, EGG powder, SOY sauce (water, SOY beans, salt, WHEAT flour).

ALLERGENS

Product Contains:

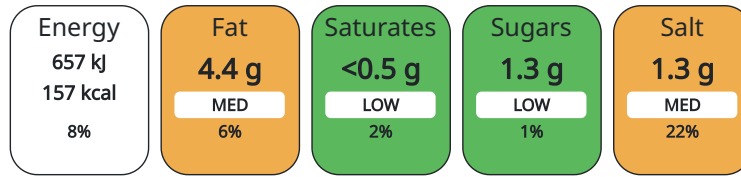
Celery/Celeriac	Yes	Mustard	No
Cereals Containing Gluten	Yes	Nuts (Tree)	No
Barley	No	Almond nuts	No
Oats	No	Brazil nuts	No
Rye	No	Cashew nuts	No
Wheat (including Spelt and Khorasan)	Yes	Hazelnuts	No
Crustacea	No	Macadamia (Queensland) nuts	No
Eggs	Yes	Pecan nuts	No
Fish	No	Pistachio nuts	No
Lupin	No	Walnuts	No
Milk	Yes	Peanuts	No
Molluscs	No	Sesame Seeds	No
		Soybeans	Yes
		Sulphur Dioxide and Sulphites	No

SUPPLEMENTARY INGREDIENT INFORMATION ADDITIVES

GM Protein/DNA	No
----------------	----

Product Contains:

Each 100g/ml portion contains:



of your reference intake.

Typical values per 100g/ml : Energy 157kcal / 657kJ

Nutrient	per 100g	RI per 100g
Energy (kJ)	657 kJ	8%
Energy (kcal)	157 kcal	8%
Fat	4.4 g	6%
of which Saturates	0.4 g	2%
Carbohydrate	24.5 g	9%
of which Sugars	1.3 g	1%
Fibre	1.9 g	
Protein	3.7 g	7%
Salt	1.3 g	22%

HANDLING &
STORAGE
INFORMATION

Directions For Use

Deep Frying: 180°C. - Approx. 9 mins

Storage Instructions

Keep frozen at -18°C.

Shelf Life from Time of Production 547 Days

ORIGIN

Product Country of Origin Netherlands (the)

Origin of the Primary Ingredient Not Applicable

PRODUCT
CHARACTERISTICS
CONFIGURATION

Standards Testing

Case Configuration

Inner Pack Configuration

Variable Inner Components in Outer Case No

Total Quantity of Inner Components in Outer Case 80 Units

Outer Case

Is the Outer Case Splittable? No

PRODUCT
WEIGHTS

Inner Component

Outer Case

Outer Case Gross Weight 7.49 kg

Outer Case Net Weight 7.2 kg

PRODUCT
DIMENSIONS

Inner Component

Outer Case

Outer Case Depth 149 mm

Outer Case Width 266 mm

Outer Case Height 400 mm

PALLET
INFORMATION

Quantity of Cases Per Pallet Layer 10 Cases

Pallet Height 1.49 MTR

Quantity of Layers Per Pallet 10 Layers

Pallet Gross Weight 776 kg

Quantity of Cases Per Pallet 100 Cases

CONTACT
INFORMATION

Address

Yearsley Food Ltd
Hareshill Road
OL10 2TP
Heywood
Lancs
England

technical@yearsley.co.uk
01706 694594

The information on the [Erudus System](#) has been supplied by the manufacturers of the products and, whilst the owners of the Erudus System take steps to ensure the information is regularly updated, they give no warranty and no guarantee that the information is accurate. Product information and ingredients may change, please always read product labels carefully in addition to using the information provided by Erudus.

We do not accept liability for any inaccuracies or incorrect information contained on this site.
Please visit <http://www.erudus.com/terms-and-conditions> for full terms and conditions.