

Changed Oct 10, 2025 08:08

Reviewed Oct 10, 2025 08:08

Erudus ID 4e9d9cd4d01441a7bf43b43d3644ac12

Version 1.0

Status Published

985022

# Frozen fruit scones



Frozen Fruit Scones X50 50x120g

## PRODUCT DESCRIPTION

Frozen fruit scones

Brand	Ashers Baking Company Ltd
Manufacturer Product Code	01105
Product Type	Food
Product Category	Other
Storage Type	Frozen
Erudus ID	4e9d9cd4d01441a7bf43b43d3644ac12
Specification Type	Generic

Outer Case GTIN 5096627011050



## INGREDIENTS

### Ingredient Declaration

Scone Blend [WHEAT Flour (WHEAT Flour, Calcium, Niacin, Iron, Folic Acid, Thiamin), Sugar, Vegetable Oil (Palm, Rapeseed), Whey Powder(MILK), Dextrose, Modified Starch, Raising Agents (E450(i), E500(ii)), Salt], Water, Sultanas (8%), EGG.

## ALLERGENS

Product Contains:

Celery/Celeriac	No	Mustard	May Contain
Cereals Containing Gluten	Yes	Nuts (Tree)	May Contain
Barley	May Contain	Almond nuts	May Contain
Oats	May Contain	Brazil nuts	May Contain
Rye	May Contain	Cashew nuts	May Contain
Wheat (including Spelt and Khorasan)	Yes	Hazelnuts	May Contain
Crustacea	No	Macadamia (Queensland) nuts	May Contain
Eggs	Yes	Pecan nuts	May Contain
Fish	No	Pistachio nuts	May Contain
Lupin	No	Walnuts	May Contain
Milk	Yes	Peanuts	May Contain
Molluscs	No	Sesame Seeds	May Contain
		Soybeans	May Contain
		Sulphur Dioxide and Sulphites	May Contain

*Risk Source:*

Barley (Risk Source)	Factory	Oats (Risk Source)	Factory
Rye (Risk Source)	Factory	Mustard (Risk Source)	Factory
Tree Nuts (Risk Source)	Factory	Almond nuts (Risk Source)	Factory
Brazil nuts (Risk Source)	Factory	Cashew nuts (Risk Source)	Factory
Hazelnuts (Risk Source)	Factory	Macadamia nuts (Risk Source)	Factory
Pecan nuts (Risk Source)	Factory	Pistachio nuts (Risk Source)	Factory
Walnuts (Risk Source)	Factory	Peanuts (Risk Source)	Factory
Sesame Seeds (Risk Source)	Factory		
Sulphur Dioxide and Sulphites (Risk Source)	Factory		

**Allergen Statement On Pack**

For allergens, including cereals containing GLUTEN, see ingredients in CAPITALS. Not suitable for EGG, MUSTARD, NUTS, PEANUTS, SESAME, SOYA, SULPHITES allergy sufferers.

SUPPLEMENTARY  
INGREDIENT  
INFORMATION

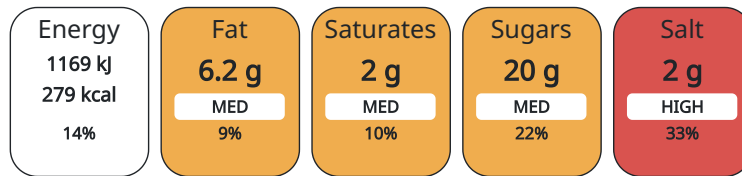
Palm Oil	Yes
Is palm oil sustainably sourced?	Yes
GM Protein/DNA	No

ADDITIVES

*Product Contains:*

NUTRITIONAL  
INFORMATION AS  
SOLD

Each 100g/ml portion contains:



of your reference intake.

Typical values per 100g/ml : Energy 279kcal / 1169kJ

Nutrient	per 100g	RI per 100g
Energy (kJ)	1169 kJ	14%
Energy (kcal)	279 kcal	14%
Fat	6.2 g	9%
of which Saturates	2 g	10%
Carbohydrate	47 g	18%
of which Sugars	20 g	22%
Protein	6.8 g	14%
Salt	2 g	33%

Source of Nutritional Information      Calculation from known/accepted datasets

HANDLING &  
STORAGE  
INFORMATION

**Directions For Use**

Remove from freezer, defrost before use. For best results consume within 24 hours

**Storage Instructions**

Keep Frozen at < -18°C

Shelf Life from Time of Production      365 Days

ACCREDITATIONS/  
CERTIFICATIONS/  
ASSURANCE  
SCHEMES

SALSA (Safe & Local Supplier Approval)

ORIGIN	<b>Product Country of Origin</b>	Northern Ireland				
	<b>Origin of the Primary Ingredient</b>	Not Applicable				
PRODUCT CHARACTERISTICS	Standards Testing					
	<b>Do you undertake trend analysis of microbiological results?</b>	Yes	<b>Is shelf life testing undertaken?</b>		Yes	
	Microbiological Standards					
	<b>Organism</b>	<b>Description</b>	<b>Frequency</b>	<b>Target</b>	<b>Maximum</b>	<b>Sample (g or ml)</b>
	Total Viable Count (TVC) (cfu/g or ml)		Occasionally	<100000	1000000	10
	Enterobacteriaceae (cfu/g or ml)		Occasionally	<100	10000	10
	E. Coli (cfu/g or ml)		Occasionally	<20	100	10
	Staphylococcus Aureus (cfu/g or ml)		Occasionally	<20	10000	10
	Yeast (cfu/g or ml)		Occasionally	<1000	10000	10
	Moulds (cfu/g or ml)		Occasionally	<1000	10000	10
Listeria Monocytogenes (cfu/g or ml)		Occasionally	<0	0	10	
HAZARD CONTROLS						
CONFIGURATION	<b>Metal Detection</b>	Yes				
	<b>Case Configuration</b>	Inner Pack Configuration				
	<b>Variable Inner Components in Outer Case</b>	No				
	<b>Total Quantity of Inner Components in Outer Case</b>	50 Units				
	<b>Is the Outer Case Splittable?</b>	No				
PRODUCT WEIGHTS	Inner Component					
	<b>Inner Component Weight</b>	120 g				
	<b>e mark</b>	No				
	Outer Case					
	<b>Outer Case Gross Weight</b>	5.7 kg				
<b>Outer Case Net Weight</b>	5.5 kg					
PRODUCT DIMENSIONS	Inner Component					
	<b>Inner Component Depth</b>	90 mm				
	<b>Inner Component Width</b>	85 mm				
	<b>Inner Component Height</b>	40 mm				
	Outer Case					
	<b>Outer Case Depth</b>	407 mm				
	<b>Outer Case Width</b>	302 mm				
	<b>Outer Case Height</b>	202 mm				
PALLET INFORMATION	<b>Quantity of Cases Per Pallet Layer</b>	7 Cases	<b>Pallet Type</b>		UK Standard Pallet	
	<b>Quantity of Layers Per Pallet</b>	5 Layers	<b>Pallet Height</b>		1.01 MTR	
	<b>Quantity of Cases Per Pallet</b>	35 Cases	<b>Pallet Gross Weight</b>		199.5 kg	
OTHER INFORMATION						

CONTACT  
INFORMATION

**Address**

Ashers Baking Company Ltd  
581 Doagh Road  
Ballyearl  
BT365RZ  
Newtownabbey  
County Antrim  
United Kingdom

quality@ashersbakingco.com  
02890836686

**Technical**

Marita Jackson  
quality@ashersbakingco.com  
02890836686  
Quality Manager

**Commercial**

Colin Donaldson  
wholesale@ashersbakingco.com  
07546511425  
Sales Manager

**Complaints**

Marita Jackson  
quality@ashersbakingco.com  
02890836686  
Quality Manager

The information on the [Erudus System](#) has been supplied by the manufacturers of the products and, whilst the owners of the Erudus System take steps to ensure the information is regularly updated, they give no warranty and no guarantee that the information is accurate. Product information and ingredients may change, please always read product labels carefully in addition to using the information provided by Erudus.

We do not accept liability for any inaccuracies or incorrect information contained on this site.  
Please visit <http://www.erudus.com/terms-and-conditions> for full terms and conditions.