

Changed Jun 10, 2025 13:42

Reviewed Jun 10, 2025 13:42

Erudus ID 483a3c2763094990acbb101790031efc

Version 3.1

Status Published

972453

# Seafeast Raw Peeled & Deveined Vannamei Prawns 16/20 10 x 1kg

Raw Peeled & Deveined Vannamei Prawns 16/20 10x1kg

## PRODUCT DESCRIPTION

Frozen, raw, peeled, deveined, tail off prawn (*Litopenaeus vannamei*) 16/20

Brand	Pan Euro Foods
Manufacturer Product	65305 (30099)
Code	
Product Type	Food
Product Category	Prawns, Shrimp & Scampi
Storage Type	Frozen
Erudus ID	483a3c2763094990acbb101790031efc
Specification Type	Fish and Seafood
Inner Component GTIN	5391511149421
Outer Case GTIN	05391511149438



## INGREDIENTS

### Ingredient Declaration

King PRAWN (*Litopenaeus Vannamei*) (93.5%) (CRUSTACEAN), Water (as Protective Ice Glaze), Salt, Stabilisers: Triphosphates, Polyphosphates.

## ALLERGENS

Product Contains:

<b>Celery/Celeriac</b>	No	<b>Mustard</b>	No
<b>Cereals Containing Gluten</b>	No	<b>Nuts (Tree)</b>	No
<b>Barley</b>	No	<b>Almond nuts</b>	No
<b>Oats</b>	No	<b>Brazil nuts</b>	No
<b>Rye</b>	No	<b>Cashew nuts</b>	No
<b>Wheat (including Spelt and Khorasan)</b>	No	<b>Hazelnuts</b>	No
<b>Crustacea</b>	Yes	<b>Macadamia (Queensland) nuts</b>	No
<b>Eggs</b>	No	<b>Pecan nuts</b>	No
<b>Fish</b>	No	<b>Pistachio nuts</b>	No
<b>Lupin</b>	No	<b>Walnuts</b>	No
<b>Milk</b>	No	<b>Peanuts</b>	No
<b>Molluscs</b>	No	<b>Sesame Seeds</b>	No
		<b>Soybeans</b>	No
		<b>Sulphur Dioxide and Sulphites</b>	No

### Additional Allergen Information

For allergens, see ingredients in bold/capital.

SUPPLEMENTARY  
INGREDIENT  
INFORMATION

<b>Palm Oil</b>	No
<b>Hydrogenated Vegetable Oil/Fat</b>	No
<b>GM Protein/DNA</b>	No

ADDITIVES

*Product Contains:*

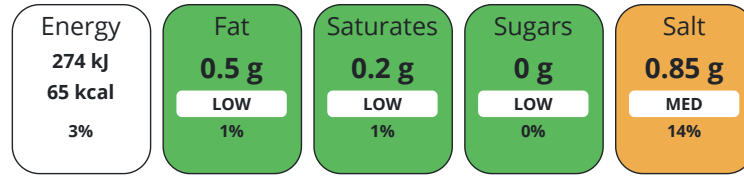
<b>Artificial Antioxidants</b>	No	<b>Artificial Flavourings</b>	No
<b>Artificial Colours</b>	No	<b>Artificial Preservatives</b>	No
<b>Artificial Flavour Enhancers</b>	No	<b>Artificial Sweeteners</b>	No

DIET SUITABILITY

<b>Halal Diet</b>	Certified	<b>Kosher Diet</b>	No
-------------------	-----------	--------------------	----

NUTRITIONAL  
INFORMATION AS  
SOLD

Each 100g/ml portion contains:



of your reference intake.

Typical values per 100g/ml : Energy 65kcal / 274kJ

Nutrient	per 100g	RI per 100g
<b>Energy (kJ)</b>	274 kJ	3%
<b>Energy (kcal)</b>	65 kcal	3%
<b>Fat</b>	0.5 g	1%
<b>of which Saturates</b>	0.2 g	1%
<b>Carbohydrate</b>	0 g	
<b>of which Sugars</b>	0 g	
<b>Protein</b>	15.2 g	30%
<b>Salt</b>	0.85 g	14%

SUPPLEMENTARY  
NUTRITIONAL  
INFORMATION

HFSS (HIGH IN  
FAT, SALT AND  
SUGAR)  
HANDLING &  
STORAGE  
INFORMATION

<b>HFSS Status</b>	No
--------------------	----

**Directions For Use**

Defrost at 0 – 4°C and cook thoroughly. Please ensure the food is piping hot and fully cooked throughout prior to serving.

**Storage Instructions**

Keep frozen at -18°C or below. Once defrosted, keep refrigerated between 0 – 4°C and use within 24 hours. Do not refreeze once defrosted.

<b>Shelf Life from Time of Production</b>	730 Days
---	----------

ACCREDITATIONS/  
CERTIFICATIONS/  
ASSURANCE  
SCHEMES  
ORIGIN

<b>Best Aquaculture Practices (BAP) Certification</b>	<b>BRCGS Certified</b>
<b>Product Country of Origin</b>	Vietnam
<b>Origin of the Primary Ingredient</b>	Vietnam

PRODUCT  
CHARACTERISTICS

Standards Testing			
<b>Do you undertake trend analysis of microbiological results?</b>	No	<b>Is shelf life testing undertaken?</b>	No

Microbiological Standards

Organism	Description	Frequency	Target	Maximum	Sample (g or ml)
E. Coli (cfu/g or ml)		Every Batch	<20	20	1
Listeria Monocytogenes (cfu/g or ml)		Every Batch	=0	1	25
Staphylococcus Aureus (cfu/g or ml)		Every Batch	=0	1	1
Salmonella (cfu/g or ml)		Every Batch	=0	1	25
Total Viable Count (TVC) (cfu/g or ml)		Every Batch	<1000000	1000000	1

CONFIGURATION

Case Configuration

Inner Pack Configuration

**Total Quantity of Inner Components in Outer Case** 10 Units

PRODUCT WEIGHTS

Inner Component

**Variable Weight Consumer Item** No  
**Inner Component Weight** 1 kg  
**Net Drained Weight** 0.7 kg

Outer Case

**Outer Case Gross Weight** 11.5 kg  
**Outer Case Net Weight** 10 kg

PRODUCT DIMENSIONS

Inner Component

**Inner Component Depth** 400 mm  
**Inner Component Width** 230 mm  
**Inner Component Height** 0 mm

Outer Case

**Outer Case Depth** 400 mm  
**Outer Case Width** 220 mm  
**Outer Case Height** 280 mm

PALLET INFORMATION

**Quantity of Cases Per Pallet Layer** 12 Cases  
**Quantity of Layers Per Pallet** 5 Layers  
**Quantity of Cases Per Pallet** 60 Cases  
**Pallet Height** 1.4 MTR

PACKAGING

Inner Component Packaging

Type	Materials	Weight	Recycled Plastic %	Recyclable	Returnable	Composite
Bag	Plastic	15 g	- %			

Outer Case Packaging

Type	Materials	Weight	Recycled Plastic %	Recyclable	Returnable	Composite
Case	Paper/Cardboard	515 g	- %			

SAFETY & WARNINGS

OTHER INFORMATION

CONTACT  
INFORMATION

Address

Pan Euro Foods  
Block 9C  
Beckett Way  
Park West Business Park  
Dublin  
D12 XN9W  
Ireland

P: (Phone) +353 (0)1 6301490

The information on the [Erudus System](#) has been supplied by the manufacturers of the products and, whilst the owners of the Erudus System take steps to ensure the information is regularly updated, they give no warranty and no guarantee that the information is accurate. Product information and ingredients may change, please always read product labels carefully in addition to using the information provided by Erudus.

We do not accept liability for any inaccuracies or incorrect information contained on this site.  
Please visit <http://www.erudus.com/terms-and-conditions> for full terms and conditions.