

This specification is published by [Erudus](#) for Country Range Group

White Loaf 8x

Country Range Frozen Medium White Square Sliced Bread

PRODUCT DESCRIPTION

Medium Sliced (18+2) Ideal For Catering

Brand	Country Range Group
Label Own Label Code	F01024
Product Type	Food
Product Category	Bread and Bread Products
Storage Type	Frozen
Erudus ID	59339ff44bb543c780f0bdaa034f8103
Specification Type	Legacy



Outer Case GTIN 05023616488807



INGREDIENTS

Ingredient Declaration

Wheat Flour (**WHEAT** Flour, Calcium Carbonate, Iron, Niacin, Thiamin), Water, Palm Oil, Salt, Yeast, Emulsifier (Mono- and Di-Acetyltartaric Acid Esters of Mono- and Di-Glycerides of Fatty Acids), Spirit Vinegar, **SOYA** Flour, Preservative (Calcium Propionate), Flour Treatment Agent (Ascorbic Acid).

ALLERGENS

Product Contains:

Celery/Celeriac	No	Mustard	No
Cereals Containing Gluten	Yes	Nuts (Tree)	No
Barley	May Contain	Almond nuts	No
Oats	No	Brazil nuts	No
Rye	No	Cashew nuts	No
Wheat (including Spelt and Khorasan)	Yes	Hazelnuts	No
Gluten content <20ppm	No	Macadamia (Queensland) nuts	No
Crustacea	No	Pecan nuts	No
Eggs	No	Pistachio nuts	No
Fish	No	Walnuts	No
Lupin	No	Peanuts	No
Milk	No	Sesame Seeds	No
Molluscs	No	Soybeans	Yes
		Sulphur Dioxide and Sulphites	No

Risk Source:

SUPPLEMENTARY INGREDIENT INFORMATION

Palm Oil	Yes	Alcoholic Strength %Vol (ABV)	0 % Vol
Hydrogenated Vegetable Oil/Fat	No		
GM Protein/DNA	No		

ADDITIVES

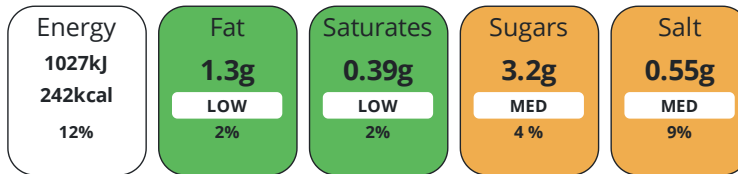
Product Contains:

Artificial Antioxidants	No	Artificial Flavourings	No
Artificial Colours	No	Artificial Preservatives	No
Artificial Flavour Enhancers	No	Artificial Sweeteners	No
Suitable for Coeliacs	No	Halal Diet	No
Kosher Diet	No	Vegetarian Diet	Suitable for
Vegan Diet	Suitable for		

DIET
SUITABILITY

NUTRITIONAL
INFORMATION

Each 100g/ml portion contains:



of your reference intake.

Typical values per 100g/ml : Energy 242kcal / 1027kj

Nutrient	per 100g/ml	RI per 100g/ml	per 40g/ml serving	RI per 40g/ml serving
Energy (kJ)	1027 kJ	12%	410.8 kJ	5%
Energy (kcal)	242 kcal	12%	96.8 kcal	5%
Fat	1.3 g	2%	0.5 g	1%
of which Saturates	0.39 g	2%	0.2 g	1%
of which Mono-unsaturates	0.6 g		0.2 g	
of which Polyunsaturates	0.3 g		0.1 g	
Carbohydrate	48.1 g	19%	19.2 g	7%
of which Sugars	3.2 g	4%	1.3 g	1%
of which Polyols	0 g		-	
of which Starch	44.9 g		18 g	
Fibre	2.7 g		1.1 g	
Protein	8.2 g	16%	3.3 g	7%
Salt	0.55 g	9%	0.2 g	3%
Sodium	230 mg		92 mg	
Serving Size	40 g			

VITAMINS AND
MINERALS

Nutrient	per 100g/ml	RI per 100g/ml	per 40g/ml serving	RI per 40g/ml serving
Vitamin A	0 µg	0%	-	
Vitamin C	7 mg	9%	2.8 mg	4%
Folate/Folic Acid	25 µg	13%	10 µg	5%
Calcium	177 mg	22%	70.8 mg	9%
Iron	1.6 mg	11%	0.6 mg	4%
Zinc	0.8 mg	8%	0.3 mg	3%

SUPPLEMENTARY
NUTRITIONAL
INFORMATION

Cholesterol per 100 g/ml (UK/FR)	0 g
Trans Fats per 100 g/ml	0 g
Fat Percentage in Dry Matter per 100 g/ml	0 %
Non Milk Extrinsic Sugars per 100 g/ml	3.2 g

HANDLING &
STORAGE
INFORMATION

Directions For Use

To Defrost Remove From Case And And Leave Bag At Room Temperature For Approximately 6 Hours Or Untill Fully Defrosted.
Once Defrosted Store In The Sealed Bag In A Cool Dry Place Away From Direct Sunlight And Use Within 5 days

Storage Instructions

Keep Frozen At -18°C Or Below. Do Not Refreeze After Thawing. Once Defrosted Store In The Sealed Bag In A Cool Dry Place Away From Direct Sunlight And Use Within 5 days.

Shelf Life from Time of Production	365 Days
---	----------

ACCREDITATIONS/
CERTIFICATIONS/
ASSURANCE
SCHEMES



ORIGIN

Product Country of Origin/Place of Provenance	United Kingdom
--	----------------

PRODUCT
CHARACTERISTICS
CONFIGURATION

Standards Testing	
Case Configuration	Inner Pack Configuration
Total Quantity of Inner Components in Outer Case	8 Units
Is the Outer Case Splittable?	No

PRODUCT
WEIGHTS

Inner Component	
Variable Weight Consumer Item	No
Net Drained Weight	0 kg
Weight/Volume	8 X 800G e
Outer Case	
Outer Case Gross Weight	0 kg
Outer Case Net Weight	0.5 kg

PRODUCT
DIMENSIONS

Inner Component	
Inner Component Depth	400 mm
Inner Component Width	260 mm
Inner Component Height	110 mm
Outer Case	
Outer Case Depth	495 mm
Outer Case Width	297 mm
Outer Case Height	253 mm

PALLET
INFORMATION

Quantity of Cases Per Pallet Layer	8 Cases	Pallet Height	1.93 MTR
Quantity of Layers Per Pallet	7 Layers	Pallet Gross Weight	418.65 kg
Quantity of Cases Per Pallet	56 Cases		

PACKAGING

Inner Component Packaging

Type	Materials	Weight	Recycled Plastic %	Recyclable	Returnable	Composite
Bag	Plastic	7.1 g	- %			

Outer Case Packaging

Type	Materials	Weight	Recycled Plastic %	Recyclable	Returnable	Composite
Case	Paper/Cardboard	498 g	- %			

OTHER INFORMATION

Intrastat/Taric Code	1905908000	Identification/Health Marks	N/A
-----------------------------	------------	------------------------------------	-----

Manufacturer Comments

New spec set up for removal of sesame alibi. Specification checked for annual review 24/2/23

CONTACT INFORMATION

ADDRESS

Country Range Group
Accrington
Lancs
United Kingdom

P. (Phone) 0845 209 3777

The information on the [Erudus System](#) has been supplied by the manufacturers of the products and, whilst the owners of the Erudus System take steps to ensure the information is regularly updated, they give no warranty and no guarantee that the information is accurate. Product information and ingredients may change, please always read product labels carefully in addition to using the information provided by Erudus.

We do not accept liability for any inaccuracies or incorrect information contained on this site.
Please visit <http://www.erudus.com/terms-and-conditions> for full terms and conditions.