

Americana 4.5 Hot Dog Roll Top Sliced

Hot Dog Roll

PRODUCT DESCRIPTION

A fully baked, small, white hot dog roll. The rolls are top sliced and are supplied frozen.

Brand	Lantmannen Unibake
Manufacturer Product Code	3007
Product Type	Food
Product Category	Bread and Bread Products
Storage Type	Frozen
Erudus ID	4f604c0a52b8421f89ab93bac11cf35c
Specification Type	Legacy



Inner Component GTIN	5037173000228
Outer Case GTIN	05038910005308



INGREDIENTS

Ingredient Declaration

WHEAT Flour (with Calcium, Iron, Niacin and Thiamin), Water, Sugar, Yeast, Vegetable Oils (Palm and Rapeseed), Salt, Emulsifiers (E472e, E471), Preservative (E282), Flour Treatment Agent (E300).

ALLERGENS

Product Contains:

Celery/Celeriac	No	Mustard	No
Cereals Containing Gluten	Yes	Nuts (Tree)	No
Barley	No	Almond nuts	No
Oats	No	Brazil nuts	No
Rye	No	Cashew nuts	No
Wheat (including Spelt and Khorasan)	Yes	Hazelnuts	No
Gluten content <20ppm	No	Macadamia (Queensland) nuts	No
Crustacea	No	Pecan nuts	No
Eggs	No	Pistachio nuts	No
Fish	No	Walnuts	No
Lupin	No	Peanuts	No
Milk	No	Sesame Seeds	May Contain
Molluscs	No	Soybeans	No
		Sulphur Dioxide and Sulphites	No

Risk Source:

Additional Allergen Information

For allergens, including cereals containing gluten, see ingredients in CAPITALS. May also contain sesame seeds.

SUPPLEMENTARY INGREDIENT INFORMATION

Palm Oil	Yes
Hydrogenated Vegetable Oil/Fat	No
GM Protein/DNA	No

ADDITIVES

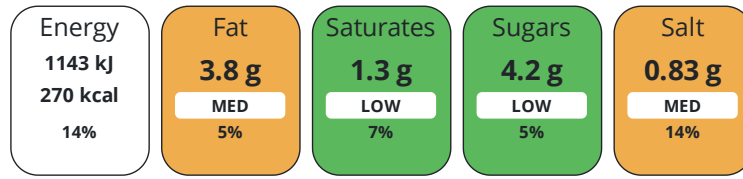
Product Contains:

Artificial Antioxidants	No	Artificial Flavourings	No
Artificial Colours	No	Artificial Preservatives	Yes
Artificial Flavour Enhancers	No	Artificial Sweeteners	No
Suitable for Coeliacs	No	Halal Diet	Suitable for
Kosher Diet	No	Vegetarian Diet	Suitable for
Vegan Diet	Suitable for		

DIET
SUITABILITY

NUTRITIONAL
INFORMATION

Each 100g/ml portion contains:



of your reference intake.

Typical values per 100g/ml : Energy 270kcal / 1143kj

Nutrient	per 100g/ml	RI per 100g/ml	per 38g/ml serving	RI per 38g/ml serving
Energy (kJ)	1143 kJ	14%	434.3 kJ	5%
Energy (kcal)	270 kcal	14%	102.6 kcal	5%
Fat	3.8 g	5%	1.4 g	2%
of which Saturates	1.3 g	7%	0.5 g	3%
of which Mono-unsaturates	1.24 g		0.5 g	
of which Polyunsaturates	1 g		0.4 g	
Carbohydrate	48.5 g	19%	18.4 g	7%
of which Sugars	4.2 g	5%	1.6 g	2%
Fibre	2.7 g		1 g	
Protein	9.2 g	18%	3.5 g	7%
Salt	0.83 g	14%	0.3 g	5%
Sodium	330 mg		125.4 mg	

Serving Size 38 g

SUPPLEMENTARY
NUTRITIONAL
INFORMATION

Trans Fats per 100 g/ml 0 g

HANDLING &
STORAGE
INFORMATION

Directions For Use

To thaw: Remove the packs required from the box and lie flat. Allow to thaw at room temperature for approximately 1 hour.

Storage Instructions

Can be stored until the best before date if stored at -18C or below. Once thawed, store in a cool dry place in a sealed bag and use within 4 days. Do not store defrosted products at chilled temperatures as this will accelerate staling. DO NOT REFREEZE ONCE THAWED.

Shelf Life from Time of Production 365 Days

Other Accreditation

Halal.

ORIGIN

Product Country of Origin/Place of United Kingdom

Provenance

Additional Origin Details

n/a

PRODUCT
CHARACTERISTICS

Standards Testing

Do you undertake trend analysis of microbiological results? Yes

Is shelf life testing undertaken? Yes

Microbiological Standards

Organism	Description	Frequency	Target	Maximum	Sample (g or ml)
Bacillus Cereus (cfu/g or ml)	Test is for Bacillus sp	Every 6 months	<100	100	-
E. Coli (cfu/g or ml)		Every 6 months	<10	10	-
Enterobacteriaceae (cfu/g or ml)		Every 6 months	<100	100	-
Staphylococcus Aureus (cfu/g or ml)		Every 6 months	<50	50	-
Salmonella (cfu/g or ml)	Absent in 25g	Every 6 months	=0	0	-
Yeast (cfu/g or ml)		Every 6 months	<1000	1000	-
Moulds (cfu/g or ml)		Every 6 months	<1000	1000	-
Aerobic Colony Count (ACC) (cfu/g or ml)		Every 6 months	<1000	1000	-

Physical Standards

Test	Description	Frequency	Target	Range	Sample (g or ml)
Dimensions Height (mm)		Every Batch	=40	37 to 43	-
Dimensions Length (mm)		Every Batch	=117	114 to 120	-
Weight (g)		Every Batch	=38	33 to 43	-

CONFIGURATION

Case Configuration

Inner Pack Configuration

Total Quantity of Inner Components in 72 Units

Outer Case

Is the Outer Case Splittable? No

PRODUCT
WEIGHTS

Inner Component

Variable Weight Consumer Item Yes

Weight/Volume

12 rolls per bag. 6 bags per case.

Outer Case

Outer Case Gross Weight 2.98 kg

Outer Case Net Weight 2.74 kg

PRODUCT DIMENSIONS

Inner Component	
Inner Component Depth	820 mm
Inner Component Width	235 mm
Inner Component Height	0 mm
Outer Case	
Outer Case Depth	491 mm
Outer Case Width	266 mm
Outer Case Height	164 mm

PALLET INFORMATION

Quantity of Cases Per Pallet Layer	8 Cases	Pallet Height	1.8 MTR
Quantity of Layers Per Pallet	10 Layers	Pallet Gross Weight	263.7 kg
Quantity of Cases Per Pallet	80 Cases		

PACKAGING

Inner Component Packaging						
Type	Materials	Weight	Recycled Plastic %	Recyclable	Returnable	Composite
Film	Plastic	29.94 g	- %			
Outer Case Packaging						
Type	Materials	Weight	Recycled Plastic %	Recyclable	Returnable	Composite
Case	Plastic	3 g	- %			
Case	Paper/Cardboard	218.3 g	- %			
Transport Packaging						
Type	Materials	Weight	Recycled Plastic %	Recyclable	Returnable	Composite
Other	Plastic	300 g	- %		Yes	
Other	Paper/Cardboard	2 g	- %		Yes	
Other	Wood	25000 g	- %		Yes	

OTHER INFORMATION

Manufacturer Comments
BRC certificate re-issued annually following audit.

CONTACT INFORMATION

Address	Technical Contact
Lantmannen Unibake	Inesa Jegoroviene
Maidstone Road	Senior Specifications Technologist
Kingston	inesa.jegoroviene@lantmannen.com
Milton Keynes	
MK10 0BD	
England	<u>P: (Phone)</u> 07885418956
<u>P: (Phone)</u> 07780837112	
Complaints Contact	
Ursula Jaillet	
Technical Coordinator	
ursula.jaillet@lantmannen.com	

The information on the [Erudus System](#) has been supplied by the manufacturers of the products and, whilst the owners of the Erudus System take steps to ensure the information is regularly updated, they give no warranty and no guarantee that the information is accurate. Product information and ingredients may change, please always read product labels carefully in addition to using the information provided by Erudus.

We do not accept liability for any inaccuracies or incorrect information contained on this site.
Please visit <http://www.erudus.com/terms-and-conditions> for full terms and conditions.